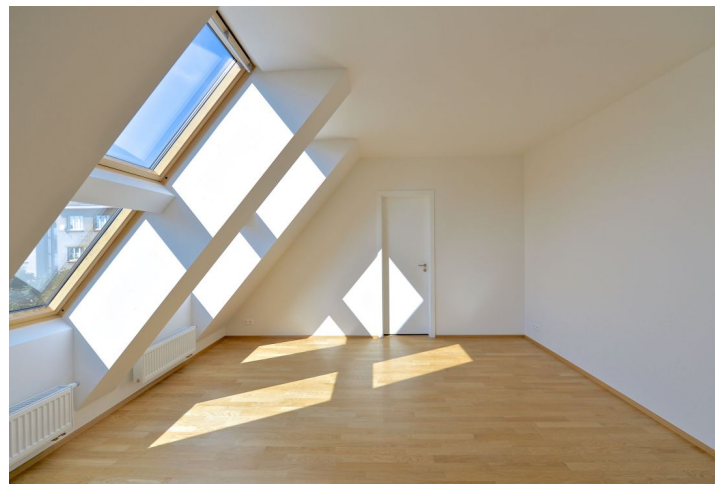


Apartment Three-bedroom (4+kk)

Sold

119.5 m², Prague 4, Podolí, Na Dolinách



Apartment Three-bedroom (4+kk)

Sold

119.5 m², Prague 4, Podolí, Na Dolinách

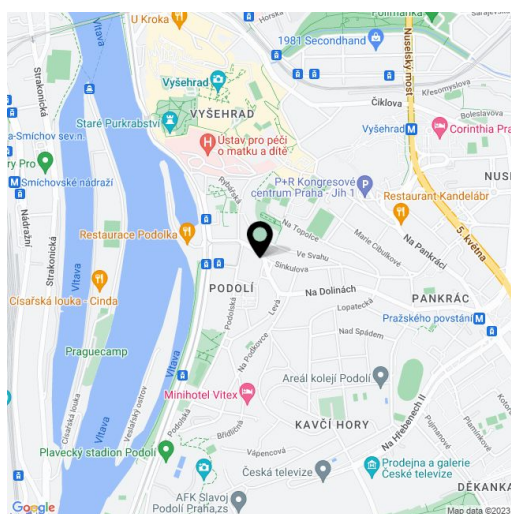
Total area	120 m ²
Parking	700 000
Garage	Yes
Cellar	Yes
PENB	G
Reference number	14166

New apartment with 2 garage parking spaces in a prestigious area of Prague 4 - Podolí.

The flat offers an open-space living room, 3 bedrooms, 2 bathrooms, a walk-in closet and a separate toilet. Features include **solid oak flooring**, **wooden French windows**, security entrance door, panel radiators, heated ladder towel rail in the bathroom, ample storage space in the hallway and bedrooms, utility room for the washing machine, boiler and hot water tank, a **cellar** and **2 garage parking spaces**.

The apartment is located in a newly built residence, full public amenities in the immediate neighborhood, restaurants, schools, sport opportunities - cycling and inline trail, tennis courts, yacht club, swimming pool.

Interior 100 m².

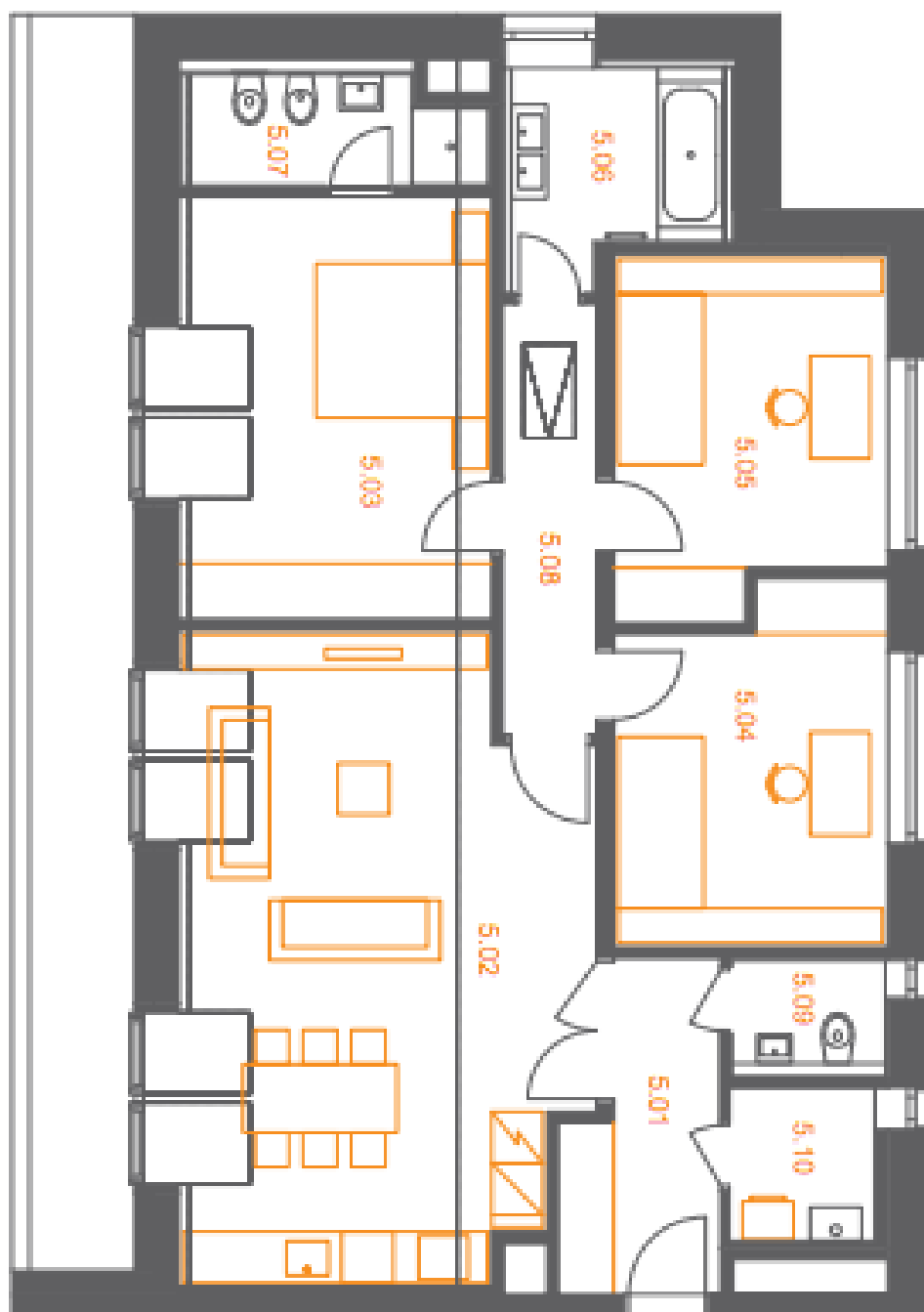


* Area of the unit according to the Civil Code. The area consists of the sum total area of the entire unit bounded by perimeter walls.

Apartment Three-bedroom (4+kk)

Sold

119.5 m², Prague 4, Podolí, Na Dolinách



Byt (1:150)

