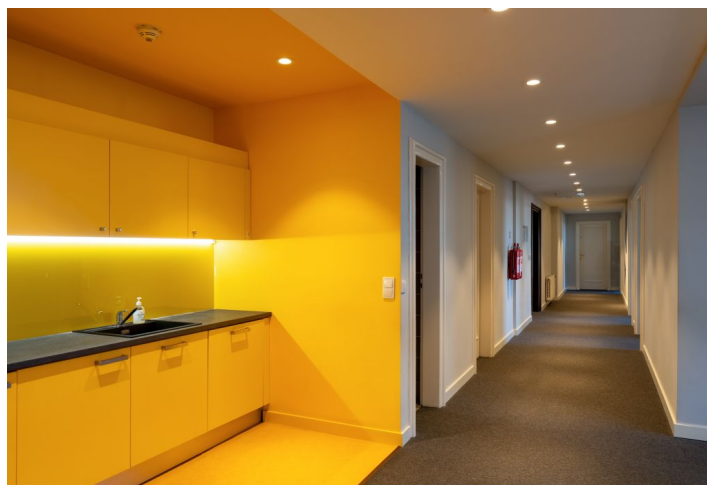
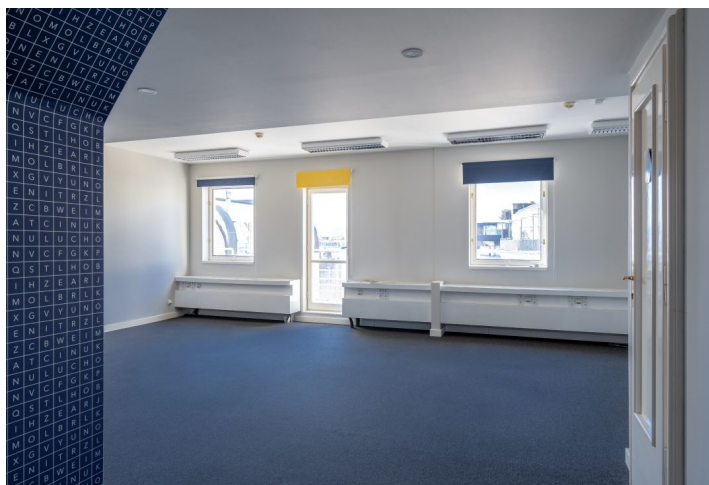


Office space

Rented

Prague 1, Nové Město, Spálená



Office space

Rented

Prague 1, Nové Město, Spálená

| | |
|-------------------------|------------------------------------|
| Service price | 172 CZK monthly per m ² |
| Available area | 358 m ² |
| Cellar | - |
| Parking | - |
| PENB | G |
| Reference number | 14083 |

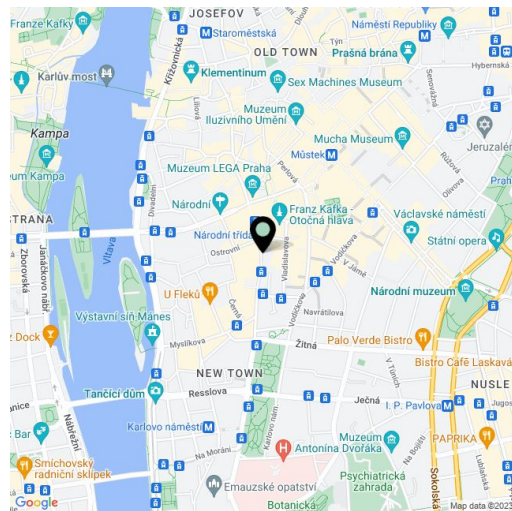
Office space for lease in a historic building in the city center, close to the National Street. The Neo-Classical building by Bedrich Bendelmayer from 1927, adapted in 1994 by architect Karel Prager for the sculptural participation of Olbram Zoubek.

Location:

The building is located in the heart of the metropolis and is easily accessible by public transport - close to Národní třída metro station (line B) and tram stops. Easy connection to important public roads and nearby train station. Good civic amenities thanks to neighboring Quadrio and My shopping centers.

Features and Services:

- Central reception
- 24/7 security service
- Air conditioning
- Central heating
- Telephone lines
- Internet
- Openable windows
- Wooden floors and carpets
- Parking
- Archive option
- Warehouse space
- Toilet and kitchenette

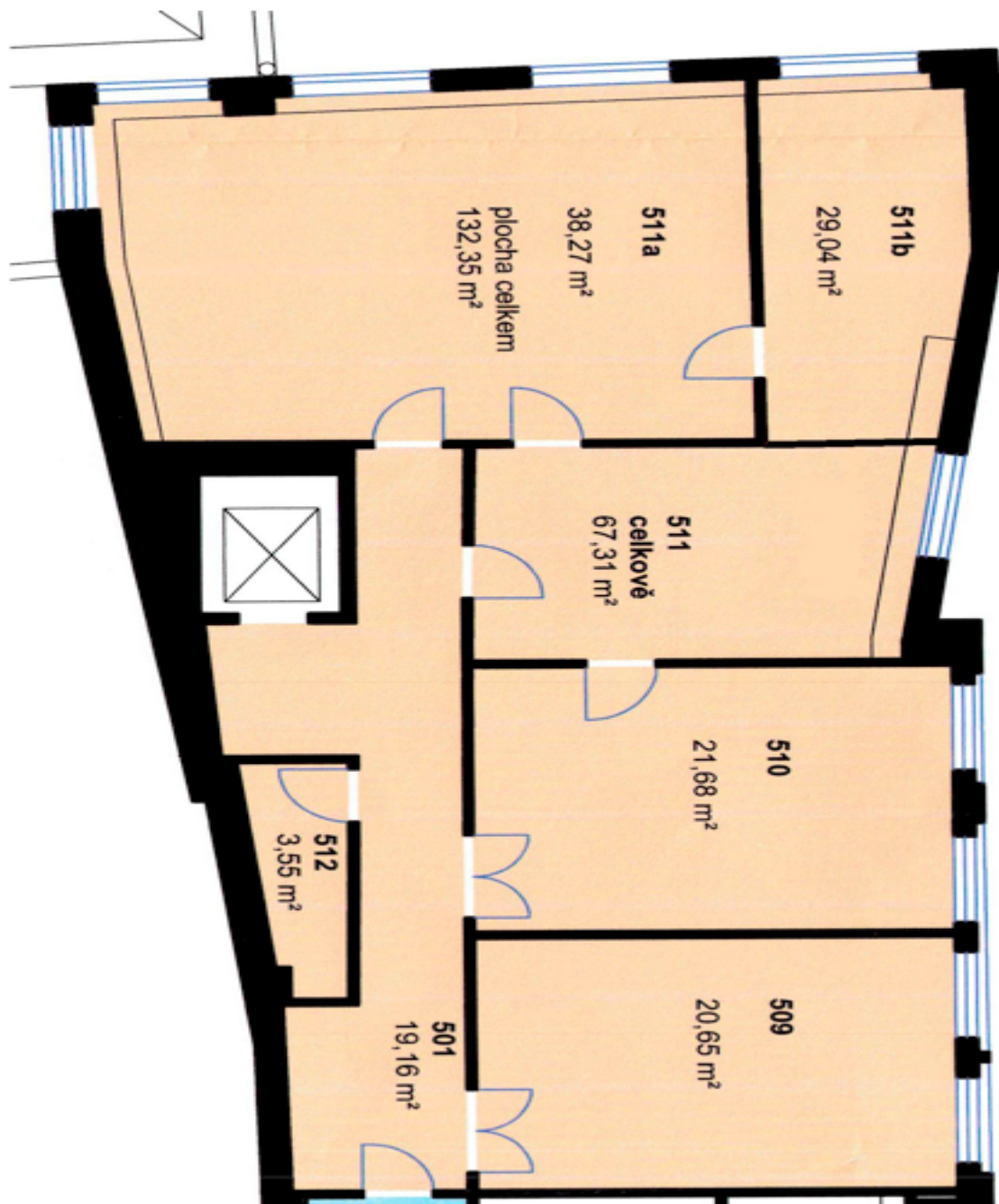


Rental and service charges are listed without VAT. Lessee pays no commission.

Office space

Prague 1, Nové Město, Spálená

Rented



Office space

Prague 1, Nové Město, Spálená

Rented

