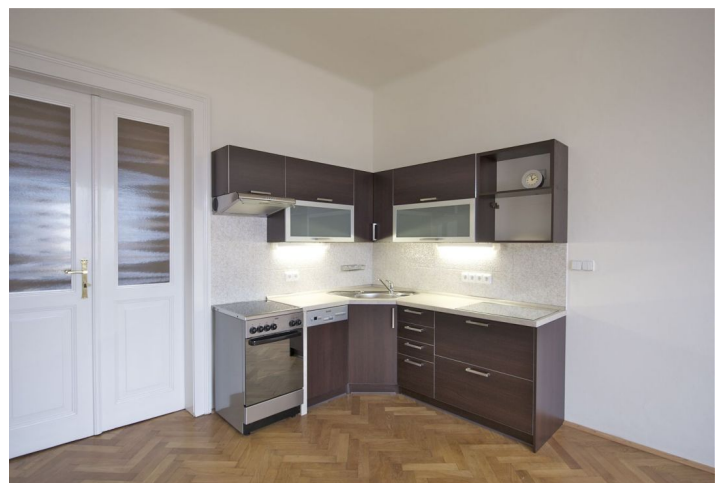


Apartment Two-bedroom (3+kk)

Rented

88 m², Prague 2, Vinohrady, Chopinova



Apartment Two-bedroom (3+kk)

Rented

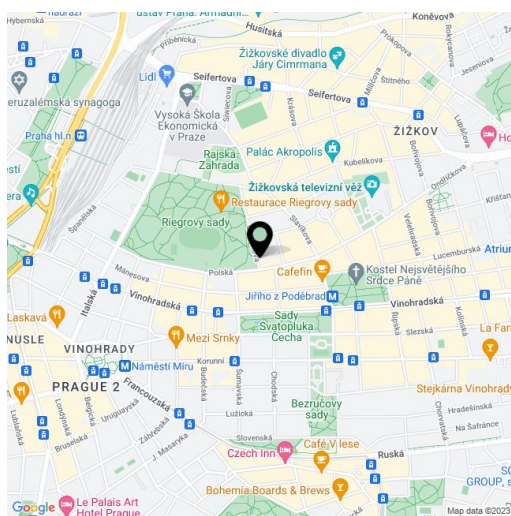
88 m², Prague 2, Vinohrady, Chopinova

Total area	88 m ²
Parking	Secure parking close by at an extra cost.
Cellar	-
PENB	G
Reference number	1406
Available from	Immediately

This unfurnished 2-bedroom flat with far reaching views incl. the Prague Castle panorama on the horizon is situated on the 4th floor in a refurbished Art Nouveau building with a lift. Located right in next to the Riegrovy sady Park, just a 5 minute walk from Jiřího z Poděbrad metro station and trams. Full amenities within easy reach.

With preserved original details, the apartment has a spacious central entrance hall accessing all rooms, a fully fitted kitchen opening into the living room, two bedrooms facing the courtyard - one with a clothes closet and one with an historic ceramic stove, shower room, a separate toilet with bidet shower, and storage room. Shared courtyard garden (400 m²) with a pergola available.

Hardwood floors, built-in wardrobes, security entry door, gas heating, dishwasher, telephone line, UPC cable, alarm wiring. Secured parking possible close by at an extra cost (approx. CZK 3000/month). Monthly deposit for service charges CZK 600/month/person. Utilities will be transferred to the tenant. Available from January 2022.



* Area of the unit according to the Civil Code. The area consists of the sum total area of the entire unit bounded by perimeter walls.

Apartment Two-bedroom (3+kk)

Rented

88 m², Prague 2, Vinohrady, Chopinova

