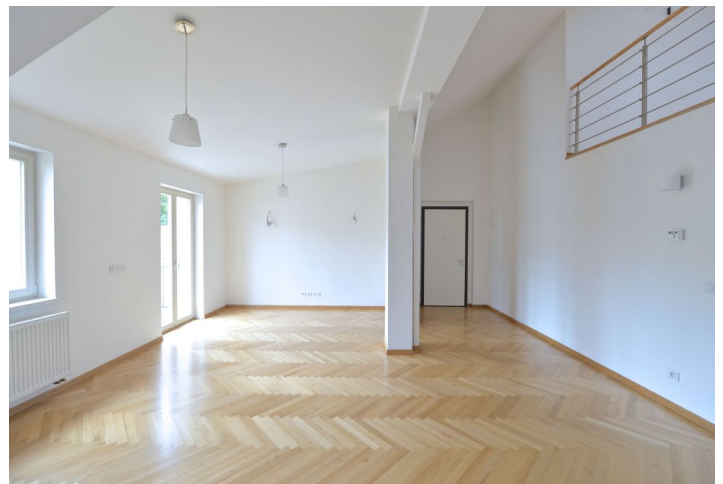


Apartment Two-bedroom (3+kk)

Sold

109 m², Prague 2, Vinohrady, Sázavská



Apartment Two-bedroom (3+kk)

Sold

109 m², Prague 2, Vinohrady, Sázavská

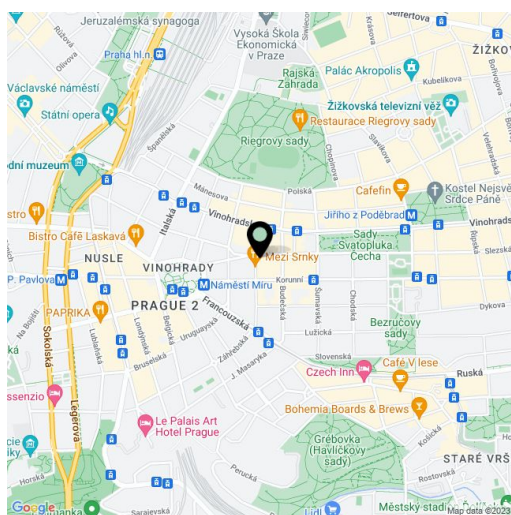
Total area	111 m ²
Floor area*	109 m ²
Balcony	2 m ²
Parking	-
Cellar	Yes
PENB	G
Reference number	14053

Bright split-level attic flat with a balcony, situated on the 5th and 6th floors of a fully renovated apartment building with a new lift, close to náměstí Míru square and Riegrovy sady park.

The layout consists of an open-plan living room with kitchen and access to the balcony facing the green courtyard, 2 bedrooms and a spacious open gallery on upper floor, bathroom and a guest toilet. Equipped with **wood floors** and renewed casement windows. The purchase price includes a **cellar**.

Sought-after location within easy reach of the center, just a few minutes' walk from náměstí Míru square with tram stops & metro station. Nearby you can find numerous schools, cafes and restaurants, divadlo Na Vinohradech Theater, and the TJ Sokol Královské Vinohrady indoor swimming pool.

Interior 109 m², balcony 2,1 m², cellar 2,9 m².



* Area of the unit according to the Civil Code. The area consists of the sum total area of the entire unit bounded by perimeter walls.

Apartment Two-bedroom (3+kk)

Sold

109 m², Prague 2, Vinohrady, Sázavská

