

## Apartment Two-bedroom (3+kk)

Rented

93 m<sup>2</sup>, Prague 5, Smíchov, Na Bělidle



# Apartment Two-bedroom (3+kk)

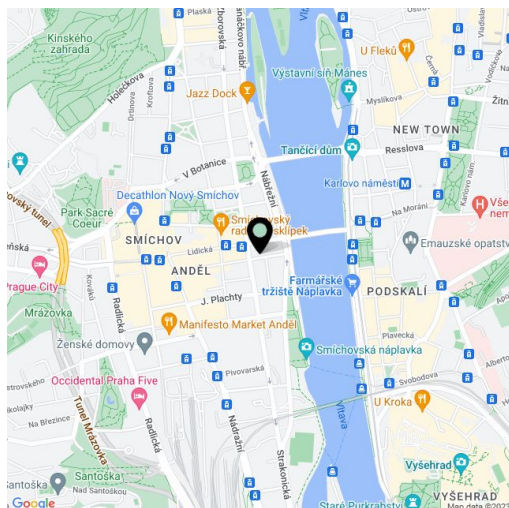
**Rented**93 m<sup>2</sup>, Prague 5, Smíchov, Na Bělidle

Total area	134 m <sup>2</sup>
Floor area*	93 m <sup>2</sup>
Terrace	41 m <sup>2</sup>
Parking	-
Cellar	-
PENB	G
Reference number	13925
Available from	Immediately

Boasting a 41 m<sup>2</sup> roof terrace, this furnished air-conditioned 2-bedroom 1-bathroom duplex apartment is on the 5th floor of a historic building with a new lift. The partially renovated building is located near the Vltava embankment, within walking distance of the Nový Smíchov commercial and entertainment center and Anděl metro station (2 min. walk) with very quick connection to the city center.

The interior features a large living room with a fully fitted open plan kitchen, a toilet, and a corridor with built-in wardrobes, on the lower level. The upper level includes a master bedroom, a smaller bedroom, and a bathroom with a bathtub and a toilet. The bedrooms and the terrace offer views of a quiet back yard.

French and atelier windows, built-in wardrobes and storage, wooden floors, tiles, security entry door, TV, garden furniture. Service charges equal 1000 CZK/person/month. Electricity is billed separately.



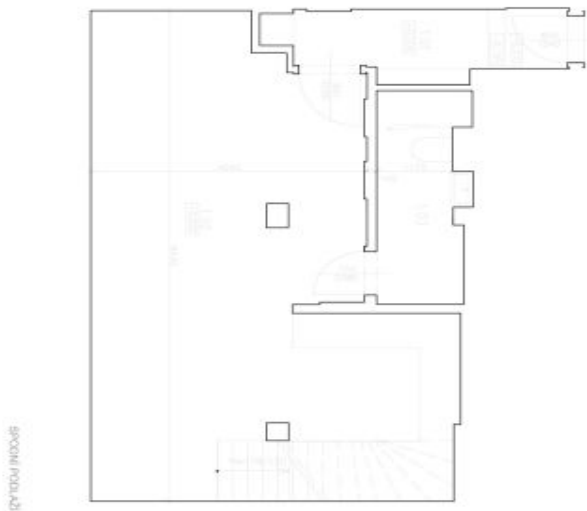
\* Area of the unit according to the Civil Code. The area consists of the sum total area of the entire unit bounded by perimeter walls.

# Apartment Two-bedroom (3+kk)

Rented

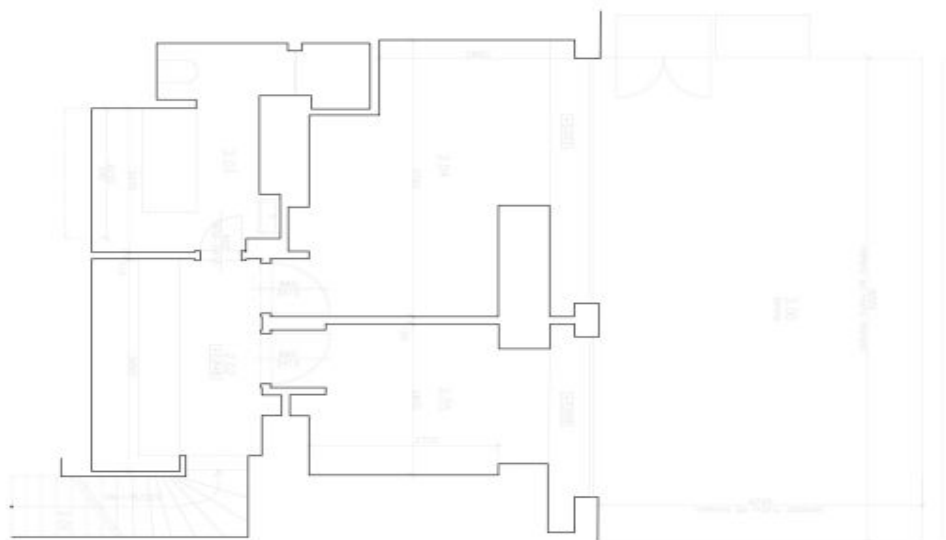
93 m<sup>2</sup>, Prague 5, Smíchov, Na Bělidle

Zařízení v ochr. BTU 2011  
m-arch.eu



Kaučovník - 1m x 1,7		pokoje (2)	
1.01	1.01	4.71	4.71
1.02	1.02	2.27	2.27
1.03	1.03	4.01	4.01
2.01	2.01	3.00/3.00	3.00
2.02	2.02	3.00	3.00
2.03	2.03	1.13	1.13
2.04	2.04	1.13	1.13
2.05	2.05	1.13	1.13
2.06	2.06	1.13	1.13
Koupelna		3.14	3.14
Kuchyň a jídelna		4.05	4.05
2.08	2.08	1.00	1.00
Schodiště		1.00	1.00
Koridory		1.00	1.00
Celkem		34.00	34.00

SPROSTI POKOJ



Na Bělidle 11, byt 17 - jednopokoj  
01