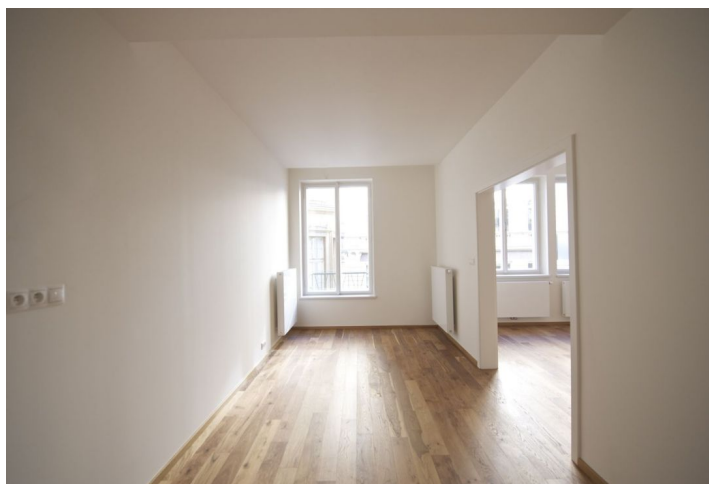


Apartment One-bedroom (2+1)

Sold

71 m², Prague 1, Malá Strana, Mostecká



Apartment One-bedroom (2+1)

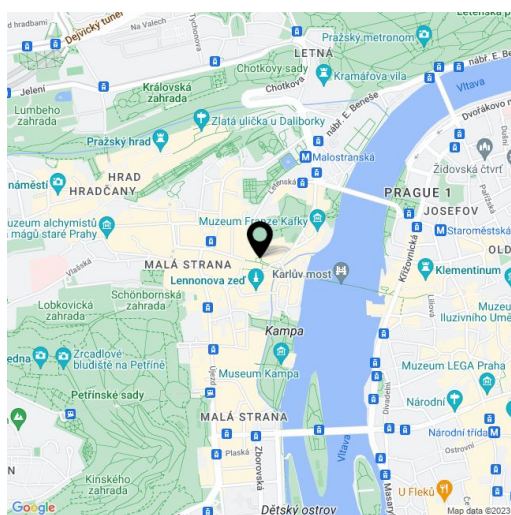
Sold

71 m², Prague 1, Malá Strana, Mostecká

Total area	72 m ²
Floor area*	71 m ²
Balcony	1 m ²
Parking	-
Cellar	-
PENB	G
Reference number	13782

Unique opportunity to live in the historic center of Prague, just steps from the Charles Bridge and Malostranské náměstí Square and at the same time within close proximity to tramlines and a metro station. Modern residence with a central courtyard situated on the old Royal Route with plenty of privacy and tranquility.

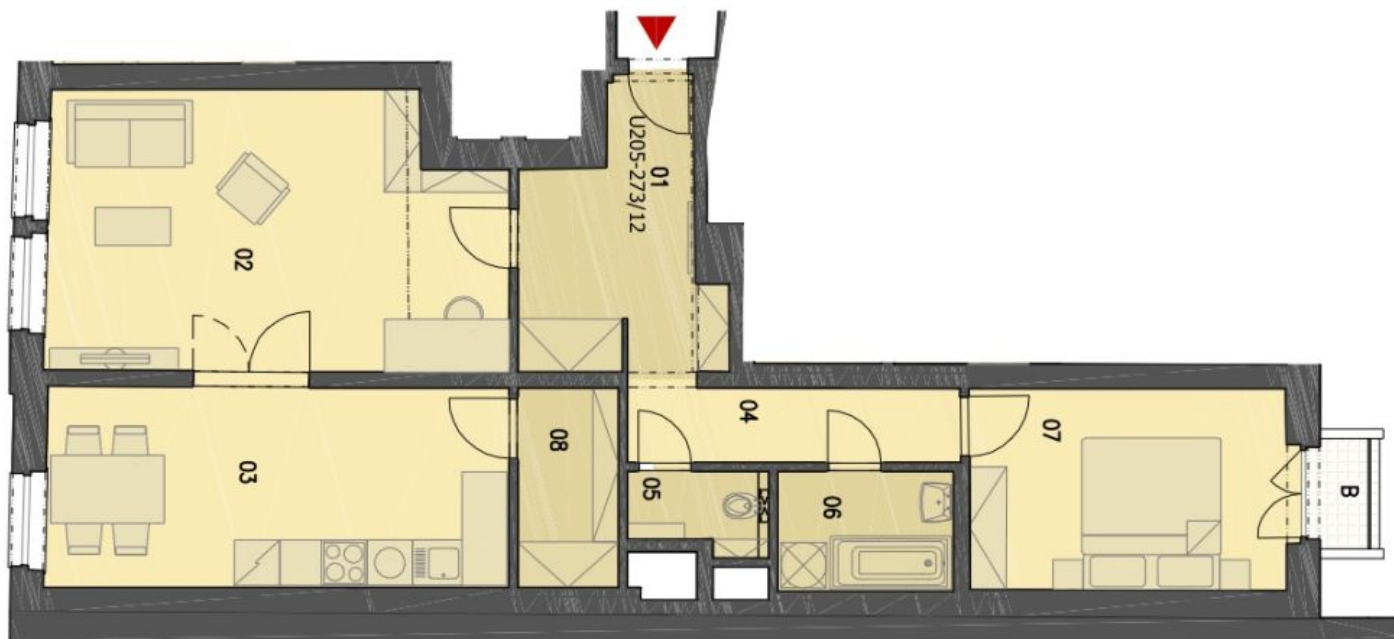
This apartment on the 2nd floor offers entrance hall, separate kitchen with dining area, living room, 1 bedroom, bathroom, guest toilet and utility room. Interior 72.06 m², balcony 1.38 m².



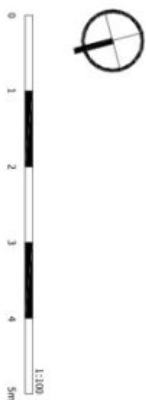
* Area of the unit according to the Civil Code. The area consists of the sum total area of the entire unit bounded by perimeter walls.

Apartment One-bedroom (2+1)

Sold

71 m², Prague 1, Malá Strana, Mostecká

U.Č.ÚJ DTI 3+AN



1	PŘEDSÍŇ / HALL	8,43 m ²
2	OBÝVACÍ POKOJ / LIVING ROOM	21,78 m ²
3	KUCHYŇ / KITCHEN	16,44 m ²
4	CHODBA / CORRIDOR	4,61 m ²
5	WC / TOILET	1,93 m ²
6	KOUPELNA / BATHROOM	3,75 m ²
7	LOŽNICE / BEDROOM	11,50 m ²
8	KOMORA / STORAGE	3,62 m ²
B	BALKON / BALCONY	1,38 m ²
UŽITNÁ PLOCHA / TOTAL AREA (bez balkonu / excluding balcony)		72,06 m ²