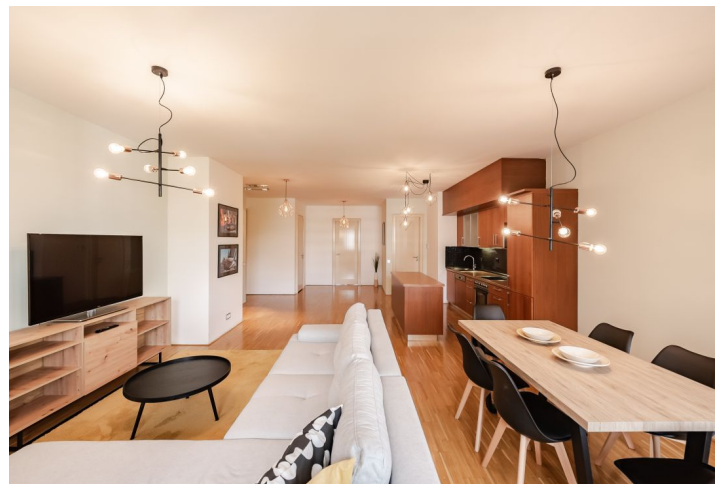


Apartment Two-bedroom (3+kk)

€ 1 839 | CZK 46 000

116 m², Prague 8, Karlín, Rohanské nábřeží



Apartment Two-bedroom (3+kk)

€ 1 839 | CZK 46 000

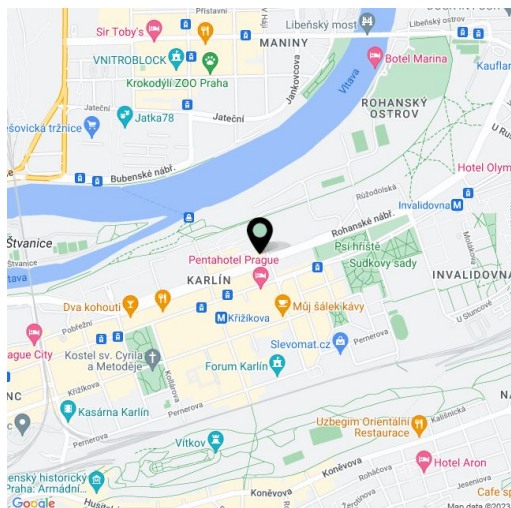
116 m², Prague 8, Karlín, Rohanské nábřeží

| | |
|-------------------------|--|
| Total area | 116 m ² |
| Parking | Two garage spaces included. |
| Garage | Yes |
| Cellar | - |
| Service price | Common building charges and energies CZK 11,000 per month. |
| PENB | C |
| Reference number | 1346 |
| Available from | 01.05.2025 |

Completely furnished 2-bathroom apartment on the 4th floor of the modern River Diamond residential project with a 24-hour reception, security, and parking. Located on the Prague 1-Prague 8 border, in one of the most dynamically developing districts, with quick access to the city center.

The apartment features a spacious living room with a fully fitted open plan kitchen and nice views of a Japanese-style courtyard garden, a master bedroom with an en-suite bathroom (bathtub, toilet), a second bedroom, a shower bathroom, a guest toilet, hall, and a utility/storage room.

Parquet floors, security entry door, washer, dryer, dishwasher, microwave oven, dishes, TV, self-standing vinoteque, audio entry phone. Building amenities include on-site property management and maintenance, elevator, and secure underground parking. Two garage spaces included.



* Area of the unit according to the Civil Code. The area consists of the sum total area of the entire unit bounded by perimeter walls.

Apartment Two-bedroom (3+kk)

€ 1 839 | CZK 46 000

116 m², Prague 8, Karlín, Rohanské nábřeží

