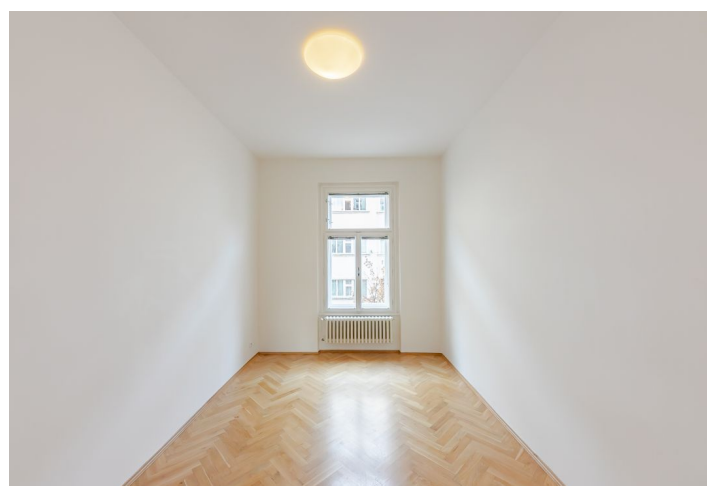


## Apartment One-bedroom (2+1)

Rented

66 m<sup>2</sup>, Prague 2, Vinohrady, Belgická



## Apartment One-bedroom (2+1)

Rented

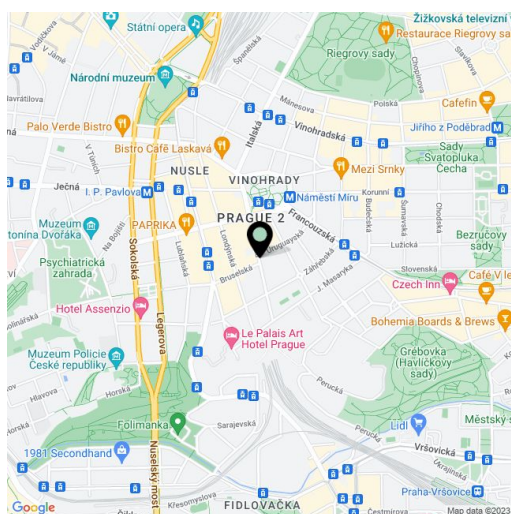
66 m<sup>2</sup>, Prague 2, Vinohrady, Belgická

Total area	66 m <sup>2</sup>
Parking	Parking in the courtyard available for an extra fee.
Cellar	-
PENB	G
Reference number	13454
Available from	Immediately

Renovated 1-bedroom flat on the 3rd floor of a well maintained reconstructed building with a lift. Located in the popular residential neighborhood of Vinohrady, close to a park, ample shopping, restaurants, bars and entertainment, with very good transportation connections (metro and trams at Náměstí Míru Square).

The flat has a bright living room, fully fitted kitchen with dining area, shower bathroom with toilet, boiler room, and built-in wardrobes in the hallway.

Other features include parquet and tile floors, high ceilings, independent gas heating, washer, dishwasher, satellite TV connection. Common building charges and utilities are billed separately. Available from November 2020.



\* Area of the unit according to the Civil Code. The area consists of the sum total area of the entire unit bounded by perimeter walls.