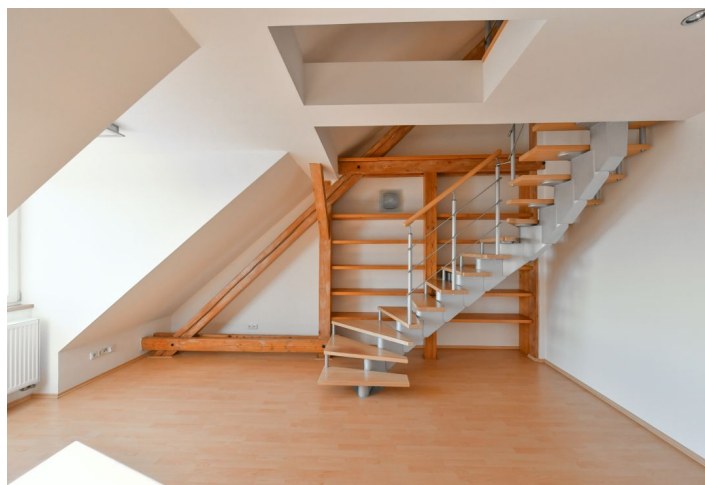
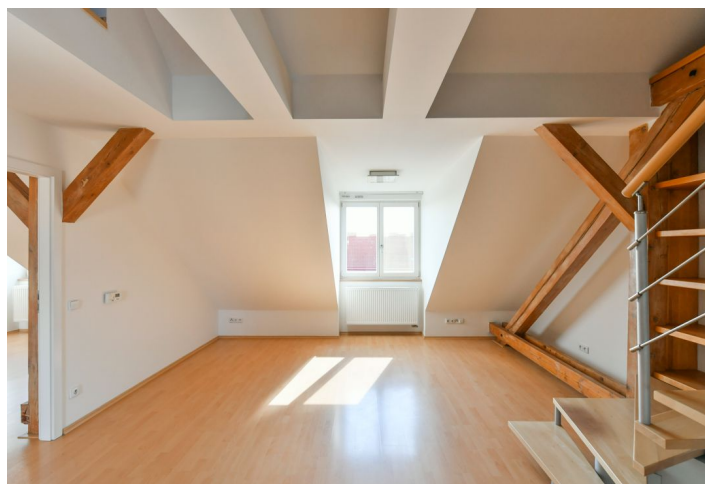


Apartment Two-bedroom (3+kk)

Rented

117 m², Prague 6, Dejvice, Jugoslávských partyzánů



Apartment Two-bedroom (3+kk)

Rented

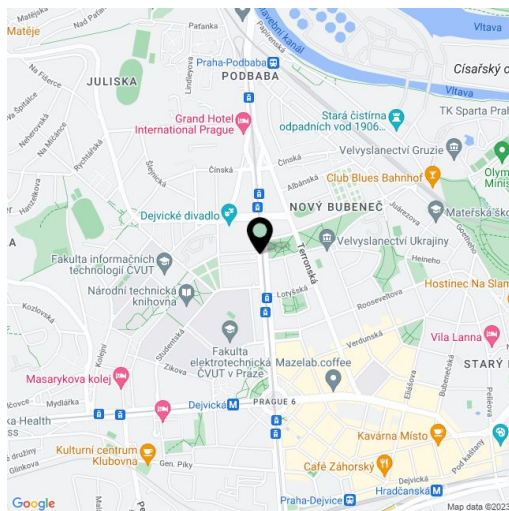
117 m², Prague 6, Dejvice, Jugoslávských partyzánů

Total area	128 m ²
Floor area*	117 m ²
Terrace	11 m ²
Parking	-
Cellar	Yes
PENB	G
Reference number	13006
Available from	Immediately

This is a 2-bedroom split-level attic apartment with a sunny terrace (11m²) providing beautiful views on the 5th floor of a building with lift. Well located just a few min. walk from Dejvická metro station with multiple tram and bus connections (five min. to the city center by metro), and within walking distance of the Prague Castle and Stromovka Park. Full amenities and services are available in the immediate neighborhood as well as the Czech Technical University campus. Conveniently located for the Prague 6 international schools and the airport.

On the first level there is an entrance hall, fully fitted modern kitchen with dining area open to the living room with a terrace, bedroom, bathroom with bath tub and heated tiled floors, separate toilet and storage. On the second level there is second bedroom with a small gallery (convenient for a study), and toilet.

Other features include laminated parquet and tiled floors, built-in wardrobes, built-in book shelves in the living room, air conditioning, gas heating system, washing machine, dishwasher. Common building charges CZK 3000/month. Gas and electricity will be transferred to the tenant. Available from 1st of June 2021.



* Area of the unit according to the Civil Code. The area consists of the sum total area of the entire unit bounded by perimeter walls.