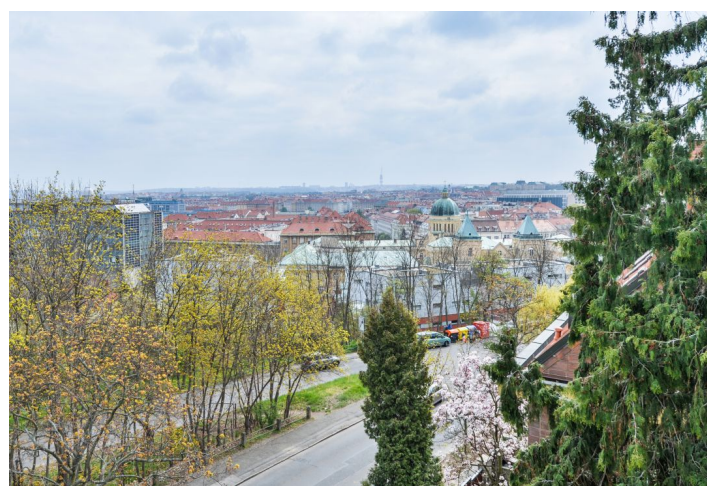
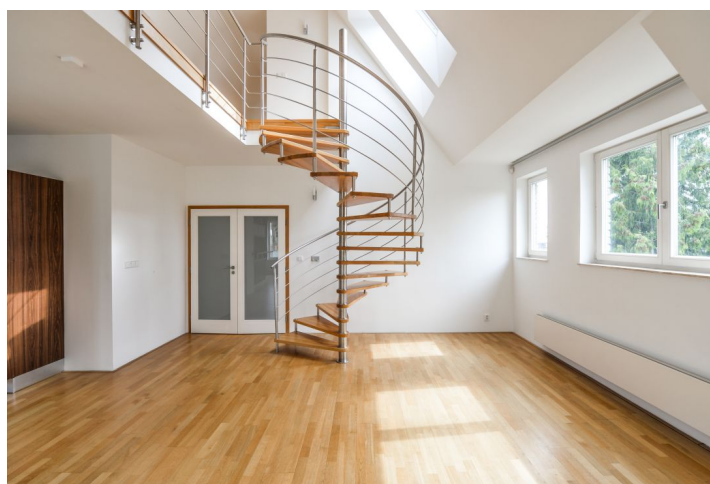


## Apartment Four-bedroom (5+kk)

Rented

206 m<sup>2</sup>, Prague 6, Dejvice, Šárecká



## Apartment Four-bedroom (5+kk)

Rented

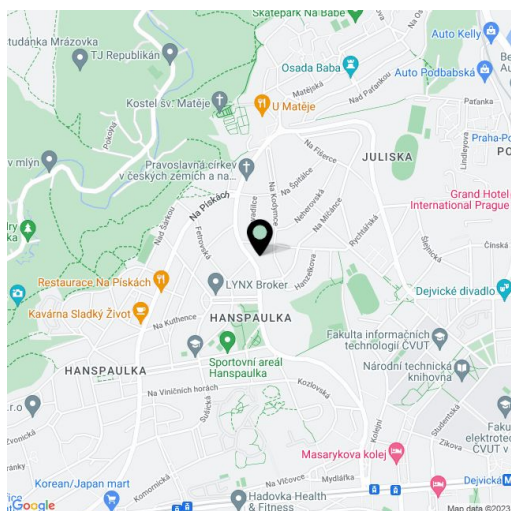
206 m<sup>2</sup>, Prague 6, Dejvice, Šárecká

Total area	222 m <sup>2</sup>
Floor area*	206 m <sup>2</sup>
Terrace	16 m <sup>2</sup>
Parking	Garage parking.
Garage	Yes
Cellar	-
Service price	Monthly service charges and utilities CZK 14,500 for 2 persons.
PENB	G
Reference number	12172
Available from	Immediately

**Spacious top floor 4-bedroom 3-bathroom duplex apartment with a 16 m<sup>2</sup> terrace, in a modern villa with a lift, enjoying charming views of the Prague Castle, in a prestigious neighborhood of Hanspaulka in close vicinity of the green Šárka Valley. Quiet residential location with very good transportation connections - a few bus stops to Bořislavka and Hradčanská metro stations, a 15-20 min. drive to the city center, and a short drive to the airport. Convenient to international schools, within walking distance of the Juliska sports grounds.**

On the lower floor, the apartment includes a spacious living room with a fully fitted open plan kitchen (71 m<sup>2</sup>) and access to the terrace, 2 bedrooms with en-suite bathrooms, an additional separate toilet, a **walk-in closet**, and a laundry room. On the upper floor, the apartment features a spacious gallery, 2 bedrooms, a shower room, and a separate toilet.

High quality fixtures, fittings and finishes throughout including **hardwood floors, marble accents, and mosaic tile bathrooms.** Washer, dryer, security entry door, gas heating, insect nets in windows, blinds, Internet and satellite connection, alarm. **Garage parking** is included.



\* Area of the unit according to the Civil Code. The area consists of the sum total area of the entire unit bounded by perimeter walls.

## Apartment Four-bedroom (5+kk)

Rented

206 m<sup>2</sup>, Prague 6, Dejvice, Šárecká

3 NP



## Apartment Four-bedroom (5+kk)

Rented

206 m<sup>2</sup>, Prague 6, Dejvice, Šárecká

4 NP

