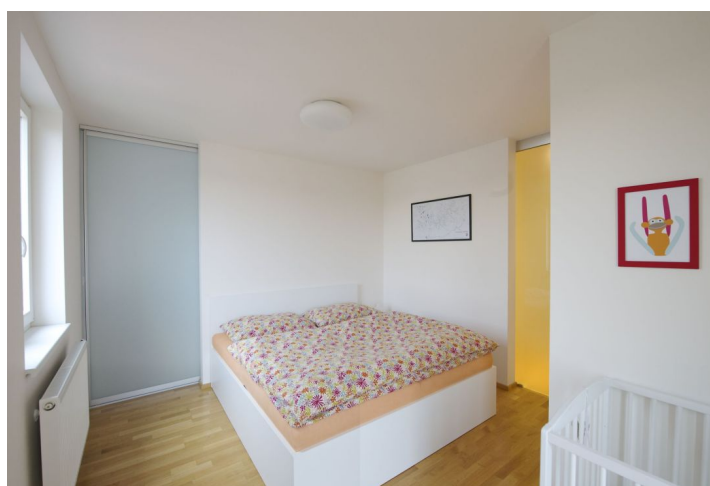


## Apartment One-bedroom (2+kk)

Rented

51 m<sup>2</sup>, Prague 7, Holešovice, Letohradská



# Apartment One-bedroom (2+kk)

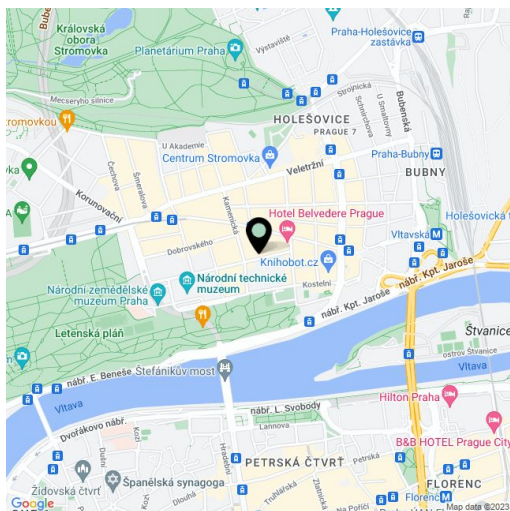
**Rented**51 m<sup>2</sup>, Prague 7, Holešovice, Letohradská

Total area	56 m <sup>2</sup>
Floor area*	51 m <sup>2</sup>
Balcony	5 m <sup>2</sup>
Parking	-
Cellar	Yes
PENB	G
Reference number	12020
Available from	Immediately

**Modern fully furnished 1-bedroom flat with a balcony on the sixth floor of a renovated traditional building with a new lift. Located on a quiet street just steps from Letná park and within walking distance of the Stromovka park, the Prague Castle and the city center. Prime location with quick transportation connections (trams to Vltavská and Hradčanská metro stations), convenient to the Prague 6 international schools and the airport.**

The bright interior includes a fully integrated kitchen open to the living room plus access to the balcony providing nice views, one bedroom with a fitted walk-in closet and balcony access, bathroom with bathtub and toilet, and entry hall with built-in utility cupboard.

Wood parquet floors, security door, gas boiler, washer, dishwasher, microwave, induction cooktop, TV, UPC cable for the Internet, audio entry phone, basement storage unit. Common building charges and water CZK 1000 per month. Gas and electricity will be transferred to the tenant.



\* Area of the unit according to the Civil Code. The area consists of the sum total area of the entire unit bounded by perimeter walls.