

House Four-bedroom (5+kk)

Rented

360 m², Prague 6, Nebušice, Nebušická



House Four-bedroom (5+kk)

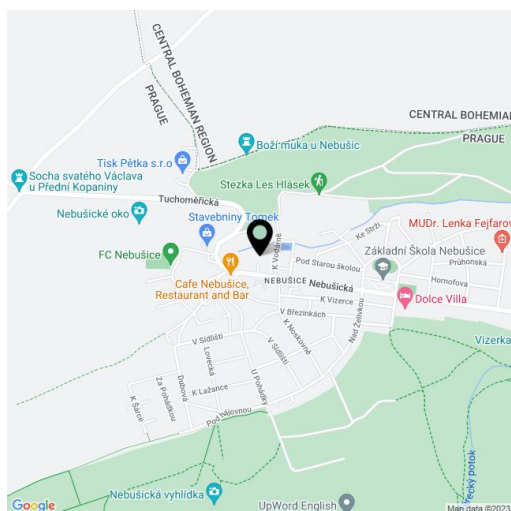
Rented360 m², Prague 6, Nebušice, Nebušická

Plot	857 m ²
Foot print	159 m ²
Garden	698 m ²
Parking	Garage for 2 cars and motorcycle.
Garage	Yes
Cellar	-
Service price	Deposit for services approx. CZK 18.000/month.
PENB	G
Reference number	11957
Available from	Immediately

Semi-detached family house set in a peaceful natural area in Nebušice opposite the International School of Prague, on the edge of Divoká Šárka natural preserve. Location with full amenities within easy reach and quick access to the airport and to the city center - a bus stop is just steps away, and it is a few steps to Bořislavka metro and trams.

On the ground floor there is fully equipped open-plan kitchen, spacious and bright living room with French windows leading to a garden, extra WC, 2 pantries and garage. 1st floor: 3 bedrooms with en-suite bathrooms, terrace accessible from the 2 bedrooms, storage. 2nd floor: bedroom with access to the terrace, full bathroom and laundry room.

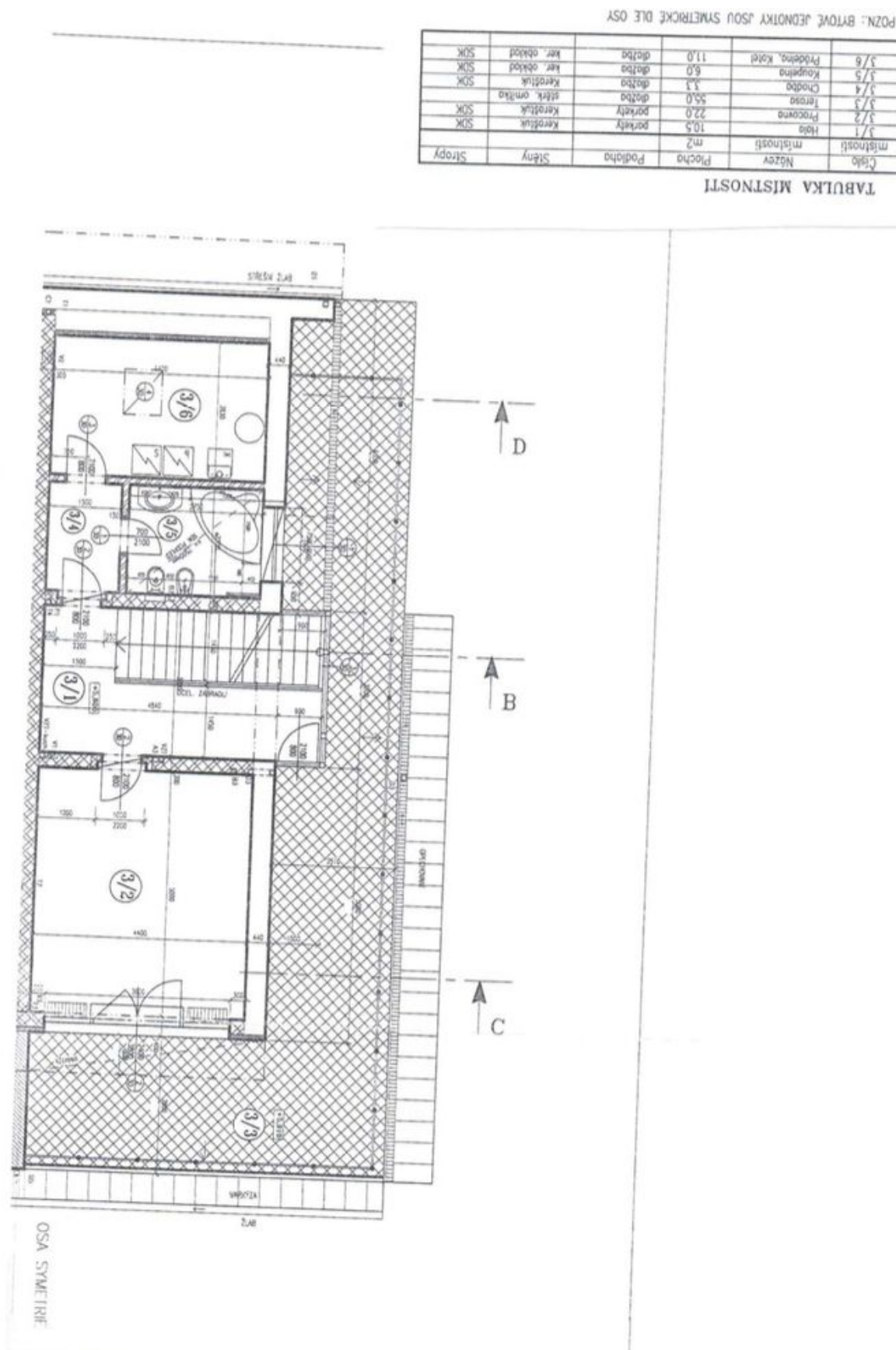
Wooden and tiled floors, floor heating in the hall, alarm. Garage for 2 cars and motorcycle.



House Four-bedroom (5+kk)

Rented

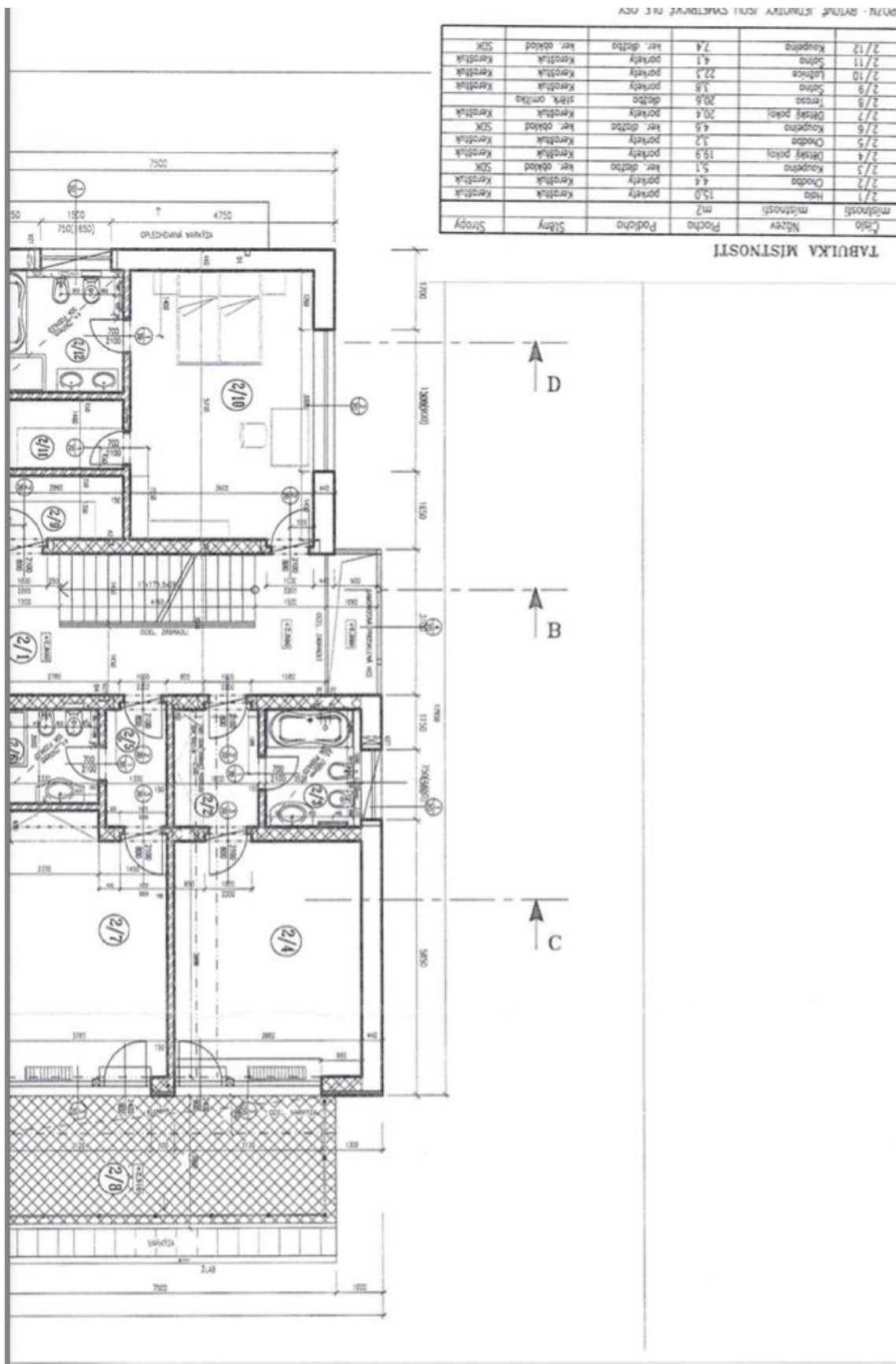
360 m², Prague 6, Nebušice, Nebušická



House Four-bedroom (5+kk)

Rented

360 m², Prague 6, Nebušice, Nebušická



House Four-bedroom (5+kk)

Rented

360 m², Prague 6, Nebušice, Nebušická

