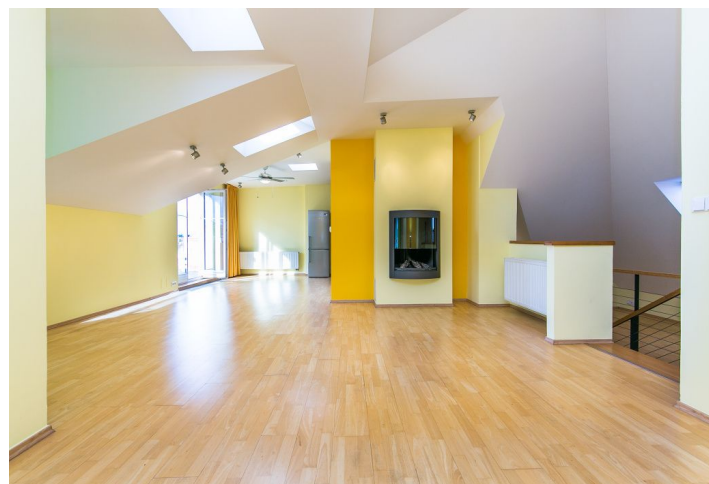
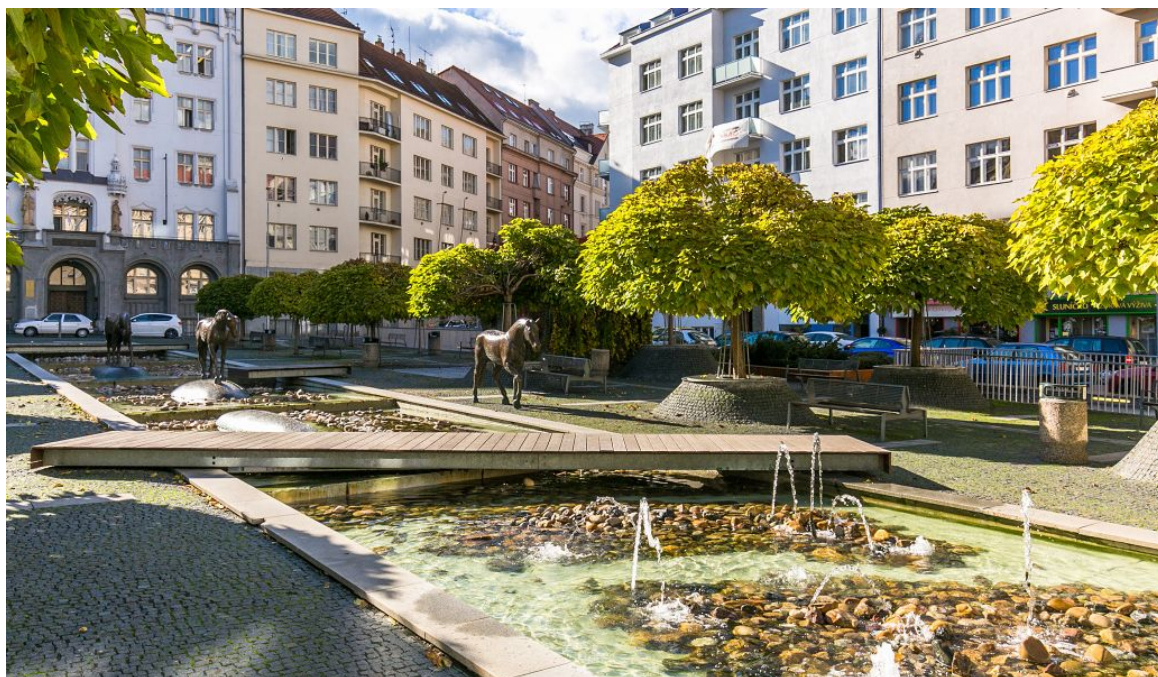


Apartment Three-bedroom (4+kk)

Rented

155 m², Prague 6, Dejvice, Wuchterlova



Apartment Three-bedroom (4+kk)

Rented

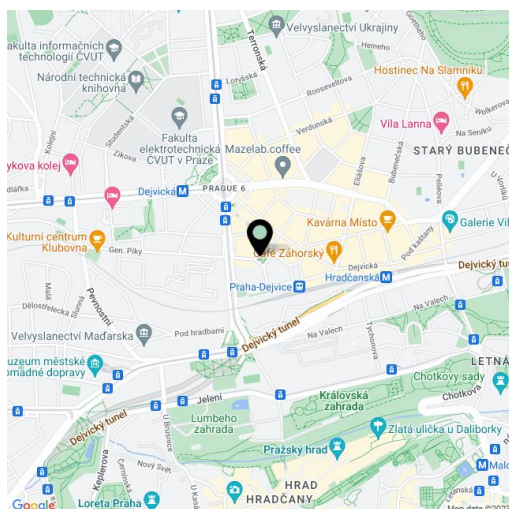
155 m², Prague 6, Dejvice, Wuchterlova

Total area	180 m ²
Floor area*	155 m ²
Terrace	25 m ²
Parking	Garage parking at CZK 4.000 per month.
Garage	Yes
Cellar	-
Service price	2500 CZK Monthly
PENB	G
Reference number	11786
Available from	Immediately

Completely reconstructed unfurnished 3-bedroom 2-bathroom split-level attic flat with two terraces on the fifth floor with lift in a fully renovated residential building with a lift. Located in the popular part of Prague 6, steps from Dejvická metro, trams and buses, with all amenities in close vicinity. Quiet street within walking distance of the Prague Castle, Stromovka and Letná parks, convenient to several international schools, and a 15 minute drive to the Prague international airport.

The lower level features two bedrooms, bathroom with tub, toilet, utility room and an entry hall. The upper level includes an open living room with a gas fireplace, dining area with access to the terrace, and a fully fitted kitchen. There is master bedroom with access to the other terrace, bathroom with tub and toilet, and a study corner. Both west oriented terraces provide nice views of the Prague panorama.

Storage space in the master bedroom, wood floors and tiles, security door, built-in wardrobes, washer/dryer, two fridges, dishwasher, microwave oven, UPC cable, TV, audio entry phone. Parking in the nearby public garage at CZK 4000 per month. Common building charges CZK 2500 per month. Gas and electricity will be transferred to the tenant. Byt se nabízí NEZAŘÍZEN.



* Area of the unit according to the Civil Code. The area consists of the sum total area of the entire unit bounded by perimeter walls.