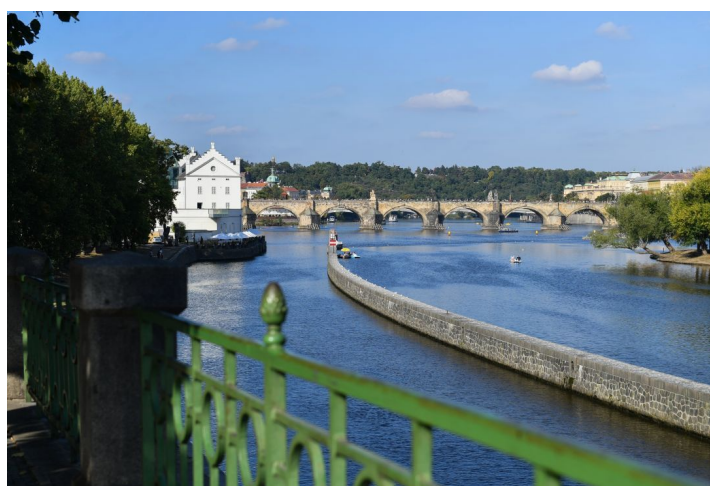
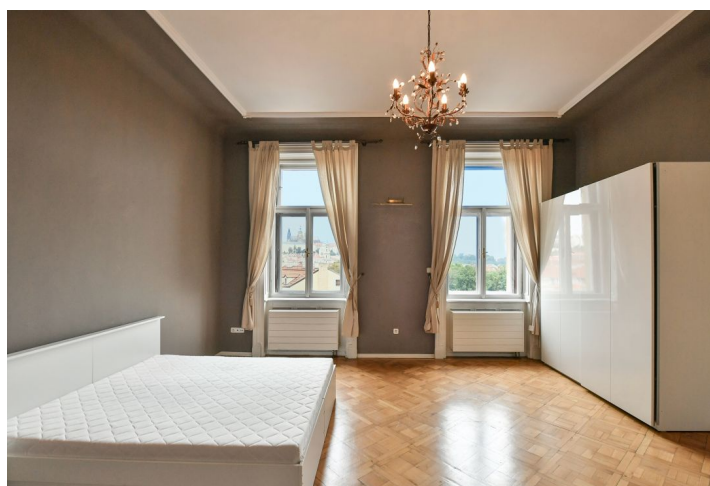


Apartment Two-bedroom (3+1)

Rented

132 m², Prague 1, Malá Strana, Malostranské nábřeží



Apartment Two-bedroom (3+1)

Rented

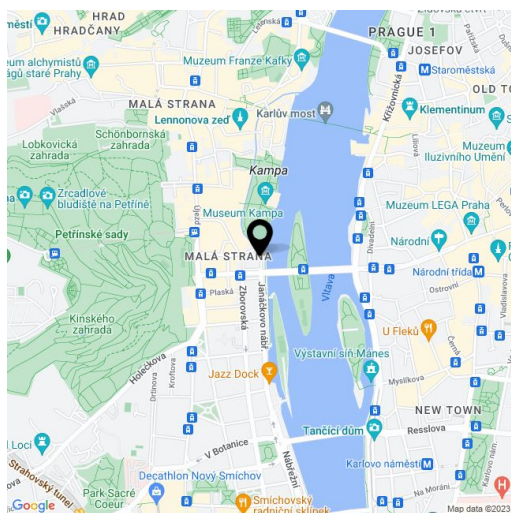
132 m², Prague 1, Malá Strana, Malostranské nábřeží

Total area	132 m²
Parking	-
Cellar	Yes
Service price	Common building charges and deposit for utilities are CZK 10,000/month.
PENB	G
Reference number	11236
Available from	Immediately

This is a tastefully renovated semi furnished 2-bedroom apartment providing beautiful direct views of the Vltava River, Prague Castle, and Kampa Island. Situated on the fourth floor of a Neo-Renaissance building from 1890 with preserved original details, an elevator, a 24-hour reception with a camera system, a cafe, a restaurant, and a green courtyard with seating and a shower. An exclusive location right on the riverbank, within walking distance of the city center as well as major historical sites in Prague.

The interior features a separate fully fitted kitchen with a dining area, a living room connected to the master bedroom (both with wonderful views), a children's bedroom, a bathroom (double sink, bathtub, bidet, toilet), a guest toilet, a storage room, and an entrance hall.

Airy rooms, high ceilings, **stucco decorations**, **solid wood parquet floors**, tiles, security entry door, **working original ceramic stove**, built-in storage, gas heating, dishwasher, washer, dryer, alarm. Concierge service is available for an extra charge.



* Size of the unit according to the Housing Act.
The area consists of the sum total of the internal area of every room.

Apartment Two-bedroom (3+1)

Rented

132 m², Prague 1, Malá Strana, Malostranské nábřeží

