



House Three-bedroom (4+kk)

€ 735 733 | CZK 18 500 000

129 m², Praha-západ, Jesenice, Racková





House Three-bedroom (4+kk)

€ 735 733 | CZK 18 500 000

129 m², Praha-západ, Jesenice, Racková

Total area	129 m ²
Plot	282 m ²
Foot print	89 m ²
Garden	185 m ²
Floor area	121 m ²
Terrace	8 m ²
Parking	2 parking spaces on the property
Cellar	-
PENB	B
Reference number	108391

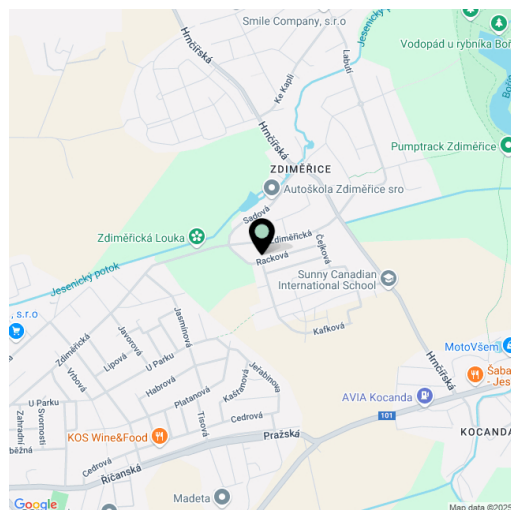
This spacious southwest-facing apartment with the characteristics of a family home is located in a new building with three separate residential units. Situated on a quiet street in Jesenice, a suburban area of Prague, the location offers a pleasant living environment near the Průhonice Castle Park and prestigious Sunny Canadian International School.

The layout includes a living area with a preparation for a kitchen, a study, a separate toilet, a walk-in closet, an entry hall, and a utility room with storage space and a connection for a washing machine. The living room has access to a **terrace** and the **garden**. Upstairs, there is a master bedroom with an ensuite bathroom and walk-in closet, two additional bedrooms, a central bathroom, and a staircase hall.

The apartment was approved in January 2025. **High-quality features** include large aluminum triple-glazed windows with **exterior blinds**, **parquet floors**, hot water underfloor heating (gas boiler source), **heat recovery ventilation**, and **designer bathrooms** (all toilets are equipped with bidet showers). The unit is also prepared for **photovoltaic installation**. **Two outdoor parking spaces** are included.

The building is situated in a **quiet area** on the outskirts of the development, yet remains within quick reach of all essential services. **The private international school** is 600 meters away, while a public school is just a 3-minute drive. Nearby, you'll find supermarkets and various shops. Prague is easily accessible via the Pražský okruh (Prague Ring Road) and the D1 highway, and a suburban bus connects to the **Opatov metro station**. **A bike path** runs past the building. Just a few minutes' walk away is the **Průhonice Park**, listed as a **UNESCO World Heritage site**.

Total area 129 m², garden 185 m².

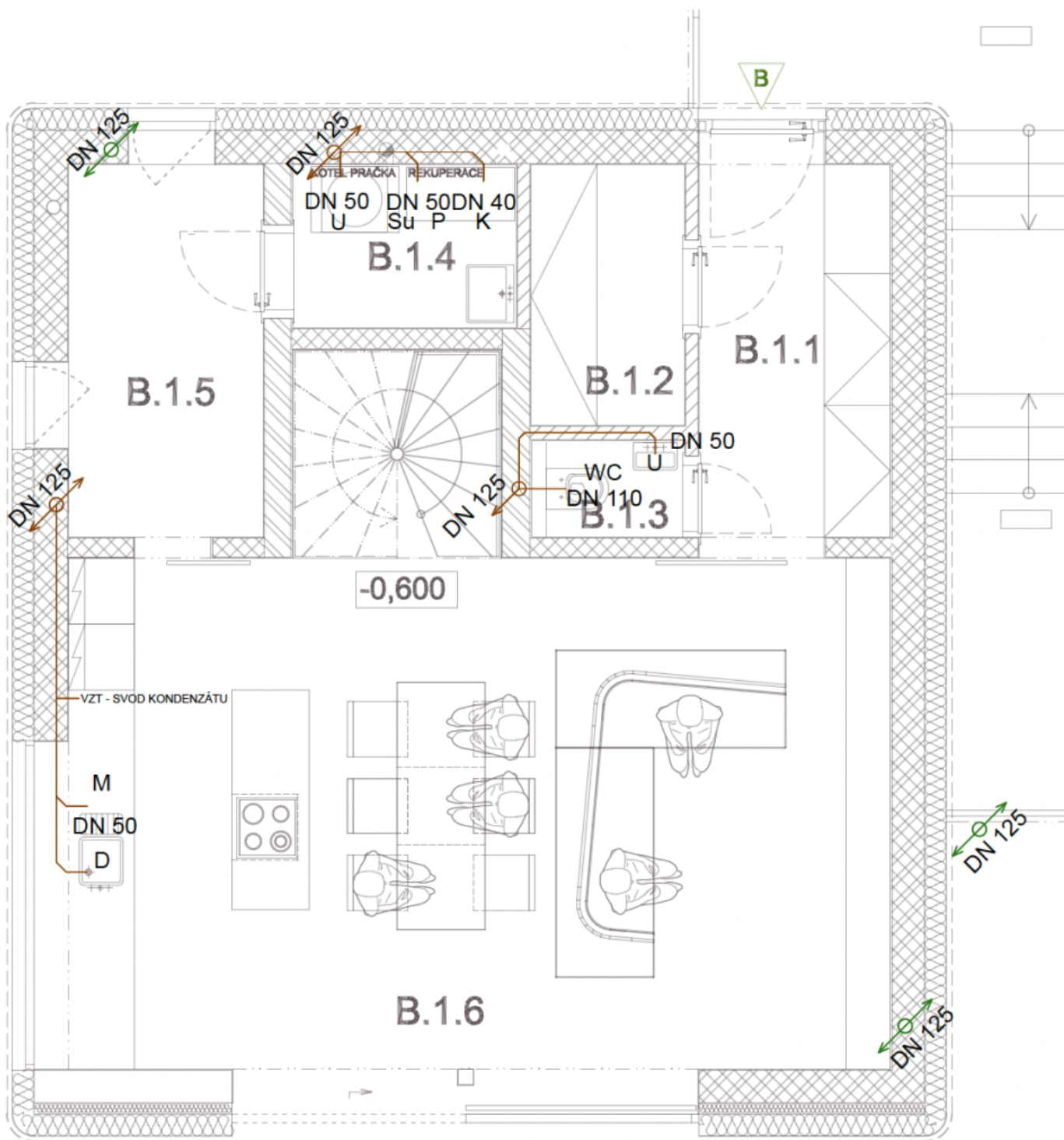




House Three-bedroom (4+kk)

€ 735 733 | CZK 18 500 000

129 m², Praha-západ, Jesenice, Racková



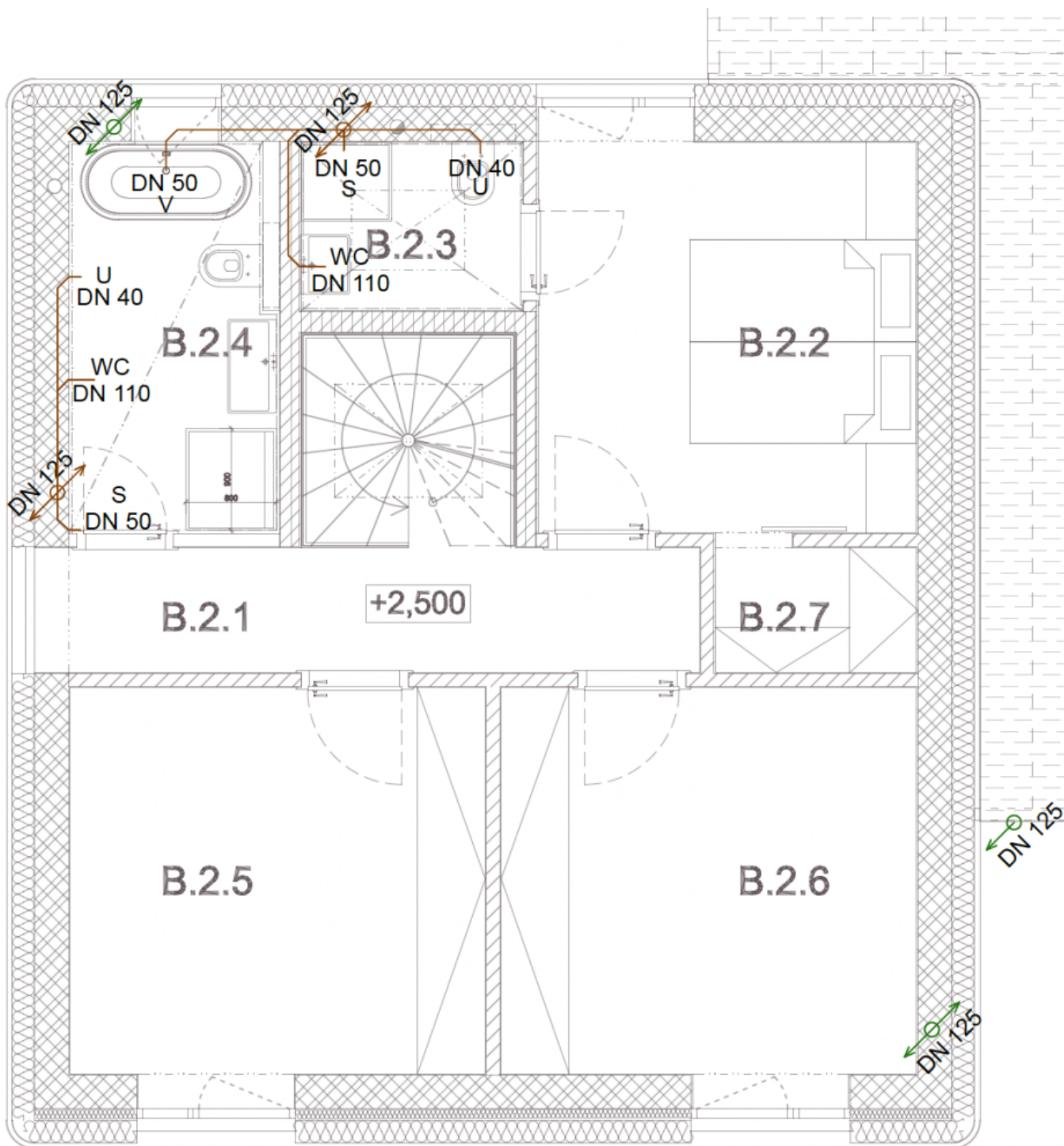
SO B



House Three-bedroom (4+kk)

€ 735 733 | CZK 18 500 000

129 m², Praha-západ, Jesenice, Racková



SO B