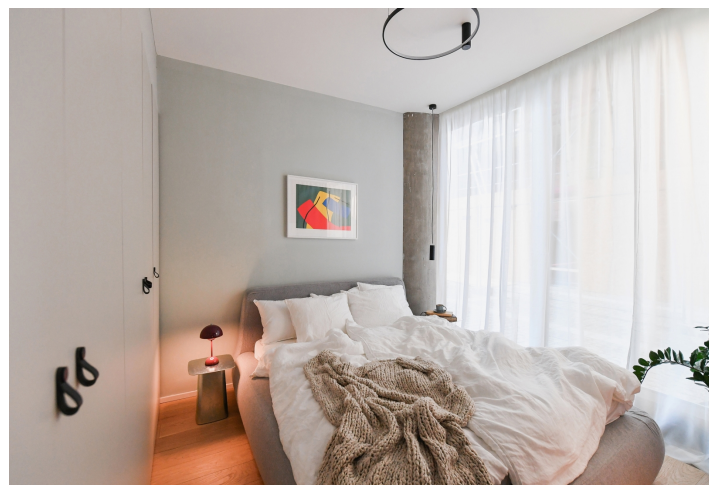


Apartment One-bedroom (2+kk)

€ 953 | CZK 23 800

32 m², Prague 8, Karlín, Sokolovská



Apartment One-bedroom (2+kk)

€ 953 | CZK 23 800

32 m², Prague 8, Karlín, Sokolovská

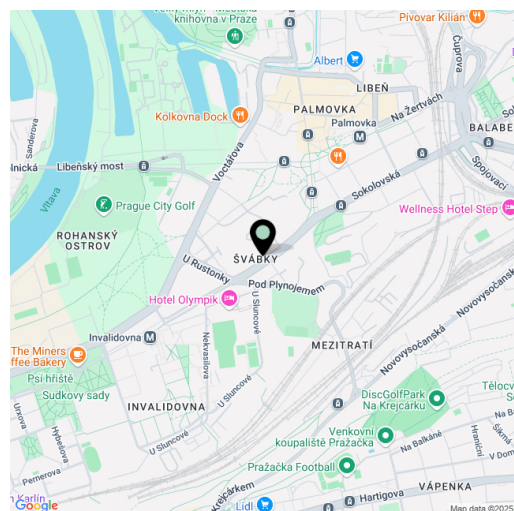
Total area	37 m²
Floor area*	32 m²
Balcony	5 m²
Parking	Garage parking is available
Garage	Yes
Cellar	Yes
Service price	Monthly deposit for service charges and utilities is billed separately.
PENB	B
Reference number	108250
Available from	01.10.2025

New apartment in Block Karlín Living, a recently built new rental housing project in Prague. This seven-story building was designed by the renowned Headhand Architects studio. We offer fully furnished one-bedroom apartments for rent with floor areas from 32 m², and rents from CZK 23,800 per month. The Block Karlín Living building, with a common rooftop terrace and quiet landscaped courtyard, is located in the popular Karlín district, within walking distance of the Invalidovna and Křižíkova metro stations and close to a tram stop. This trendy area with quick access to the center offers a full range of civic amenities and services. Many modern business centers and pockets of the district's historic development with a cosmopolitan mix of restaurants, cafes, bistros, and shops are in the immediate vicinity. The neighborhood also offers plenty of fun sports opportunities and grounds, such as tennis courts, golf driving ranges, bike paths, and fitness centers.

The apartments' interiors consist of a living room with a fully equipped kitchen with Whirlpool appliances and a dining area, a bedroom, a bathroom, and some with a foyer, while others are extended by an enclosed balcony.

All of Block's rental apartments offer practical layouts and premium facilities, including **hardwood floors**, large-format tiles, central underfloor heating in all rooms, **air-conditioning**, **controlled ventilation**, and exterior blinds. Each apartment is equipped with furniture, lights, and curtains of the highest quality, plenty of built-in storage space, a washer and dryer, and a kitchen with Whirlpool appliances (dishwasher, induction hob, refrigerator). Part of Block is a bike room and electric car charger in the underground garage that residents can use, and for a fee they can rent a **garage parking** space and a **cellar** storage unit.

More information on [Block Karlín Living](#).



* Area of the unit according to the Civil Code. The area consists of the sum total area of the entire unit bounded by perimeter walls.

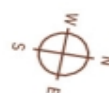
Apartment One-bedroom (2+kk)

€ 953 | CZK 23 800

32 m², Prague 8, Karlín, Sokolovská

(BLOCK)
Karlín Living

Byt Apt	A72
7. NP 6th floor	2 + kk 1 bdrm
<ul style="list-style-type: none"> 1 Obývací pokoj Living room 2 Koupelna Bathroom 3 Ložnice Bedroom 	
Podlahová plocha Floor area	52,10 m ²
4 Terasa Terrace	31,90 m ²
Celková plocha Total area	84,00 m ²



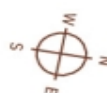
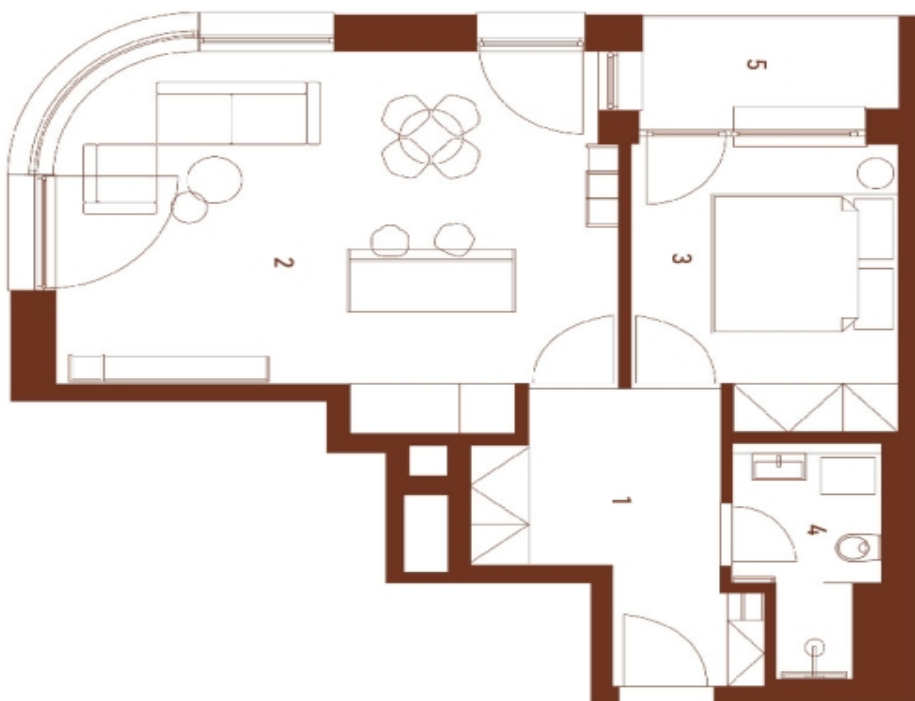
Apartment One-bedroom (2+kk)

€ 953 | CZK 23 800

32 m², Prague 8, Karlín, Sokolovská

(BLOCK)
Karlín Living

Byt Apt	A62
6. NP 5th floor	2 + kk 1 bdrm
<ul style="list-style-type: none"> 1 Hala Hallway 2 Obývací pokoj Living room 3 Ložnice Bedroom 4 Koupelna Bathroom 	
Podlahová plocha Floor area	52,40 m ²
5 Lodžie Balcony	4,70 m ²
Celková plocha Total area	57,10 m ²



svoboda&williams | CHRISTIE'S
EXKLUZIVNÍ ZASTOUPENÍ
EXCLUSIVE REPRESENTATION

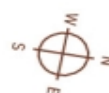
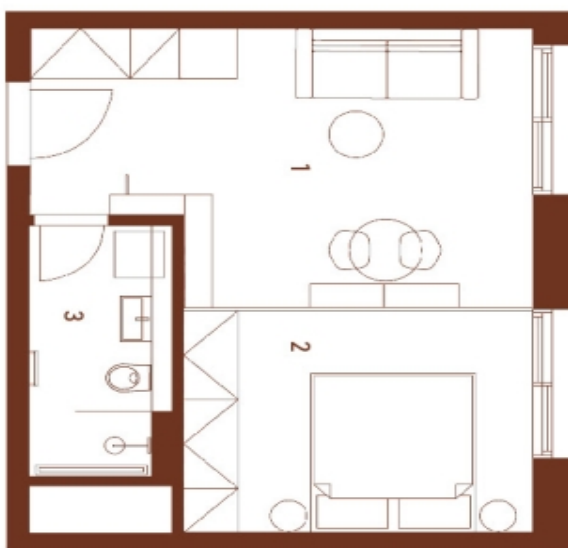
Apartment One-bedroom (2+kk)

€ 953 | CZK 23 800

32 m², Prague 8, Karlín, Sokolovská

(BLOCK)
Karlín Living

Byt Apt	A65
6. NP 5th floor	2 + kk 1 bdrm
<ul style="list-style-type: none"> 1 Obývací pokoj Living room 2 Ložnice Bedroom 3 Koupelna Bathroom 	
Podlahová plocha Floor area	35,10 m ²
Celková plocha Total area	35,10 m ²



svoboda&williams | CHRISTIE'S
EXKLUZIVNÍ ZASTOUPENÍ
EXCLUSIVE REPRESENTATION

Apartment One-bedroom (2+kk)

€ 953 | CZK 23 800

32 m², Prague 8, Karlín, Sokolovská

(BLOCK)
Karlín Living

Byt | Apt

A69

6. NP | 5th floor

2 + kk | 1 bdrm

1 Obyvací pokoj | Living room

2 Ložnice | Bedroom

3 Koupelna | Bathroom

Podlahová plocha | Floor area

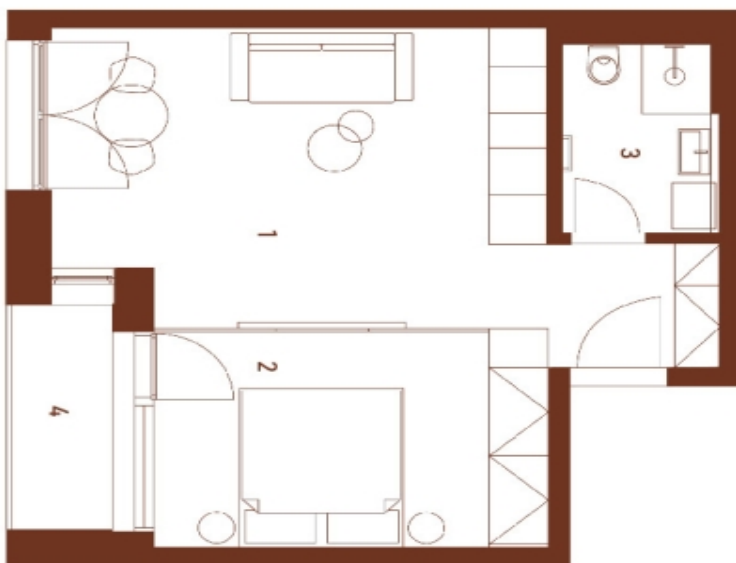
39,70 m²

4 Lodžie | Balcony

4,60 m²

Celková plocha | Total area

44,30 m²



Situace v projektu

svoboda&williams | CHRISTIE'S
EXKLUZIVNÍ ZASTOUPENÍ
EXCLUSIVE REPRESENTATION