

Apartment One-bedroom (2+1)

€ 919 632 | CZK 23 000 000

88.7 m², Prague 1, Staré Město, Křižovnická

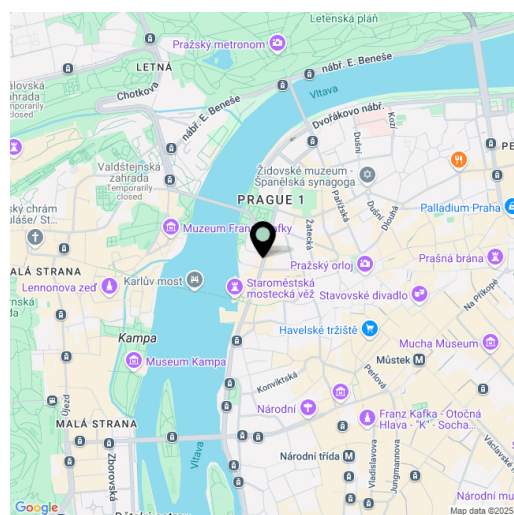


Apartment One-bedroom (2+1)

€ 919 632 | CZK 23 000 000

88.7 m², Prague 1, Staré Město, Křižovnická

Total area	91 m ²
Floor area*	89 m ²
Balcony	3 m ²
Parking	-
Cellar	-
PENB	G
Reference number	108161



* Area of the unit according to the Civil Code. The area consists of the sum total area of the entire unit bounded by perimeter walls.

This apartment with high ceilings is located on the 4th floor of a historic building with an ornate facade and an elevator. The residential building, dating from the late 19th century, is situated in the Old Town, in immediate proximity to Charles Bridge and Aleš embankment, which features beautiful park landscaping and water elements.

The layout of the apartment consists of a living room, a large kitchen with a dining area, one bedroom, a bathroom (with a bathtub), a separate toilet, a storage room, and an entrance hall with access to a balcony. The windows of the living room and bedroom face northwest onto the street, while the kitchen with the balcony faces southeast into a quiet courtyard.

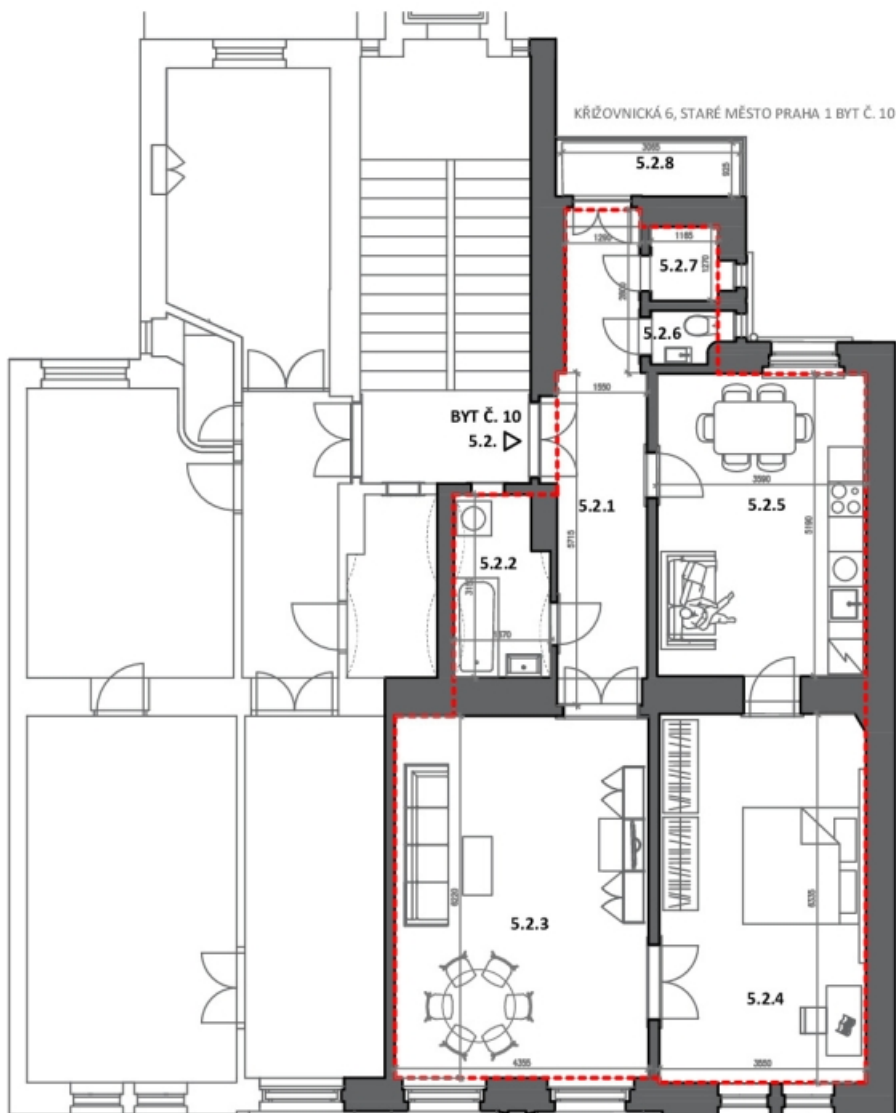
The floors feature original parquet, the windows are wooden casement windows, and the doors are solid panel. Heating is provided by a gas boiler. The building with an ornate facade was constructed in 1897, and the elevator serves mid-level floors. There are only two apartments per floor.

The prestigious location is in close proximity to Charles Bridge, the Clementinum, the Rudolfinum, and the Old Town Hall. The surrounding area offers essential services for daily life, including shops, restaurants, cafés, a library, and a post office. For relaxation, Aleš embankment and the recreational area near Smetana embankment offer postcard-like views. A tram stop and the A line metro station are just a few steps from the building.

Floor area 88.7 m², balcony 2.7 m².

Apartment One-bedroom (2+1)

€ 919 632 | CZK 23 000 000

88.7 m², Prague 1, Staré Město, Křižovnická

KŘÍŽOVNICKÁ 6, STARÉ MĚSTO PRAHA 1 BYT Č. 10 STAVAJICI STAV

BYT Č. 10 5.2.		
Č.M.	NÁZEV MÍSTNOSTI	PLOCHA [M2]
5.2.1	HALA	12,8
5.2.2	KOUPELNA	4,9
5.2.3	POKOJ	27
5.2.4	POKOJ	22,4
5.2.5	KUCHYNĚ	19,1
5.2.6	WC	1
5.2.7	KOMORA	1,5
CELKEM		88,7
PLOCHA BYTU (dle předpisu č. 366/2013 Sb.)		95,5
5.2.8	BALKON	2,7