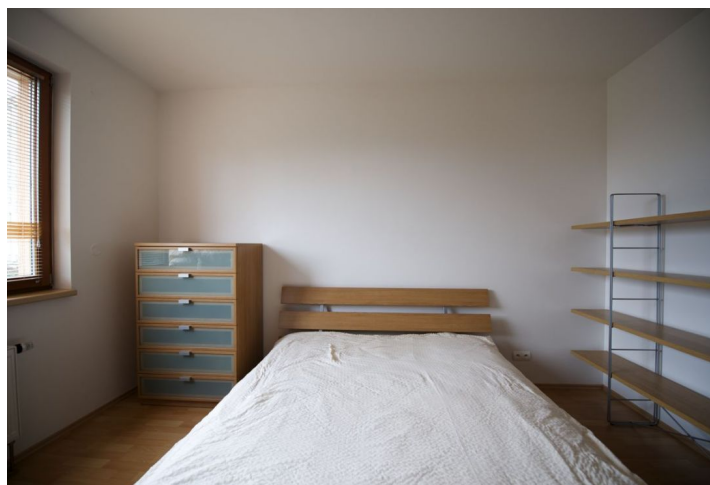


## Apartment Two-bedroom (3+kk)

Rented

83 m<sup>2</sup>, Prague 6, Břevnov, Patočkova



# Apartment Two-bedroom (3+kk)

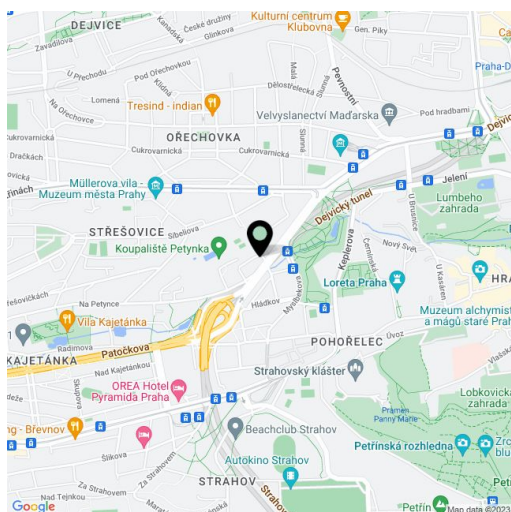
**Rented**83 m<sup>2</sup>, Prague 6, Břevnov, Patočkova

Total area	83 m <sup>2</sup>
Parking	Garage parking available at extra CZK 1900/mo.
Garage	Yes
Cellar	-
PENB	G
Reference number	10809
Available from	Immediately

**Fully furnished 2-bedroom flat with a balcony situated on the 1st floor with lift in a newly built residential complex (2003), located a short walk from the Prague Castle, close to the Břevnovský Monastery.**

This flat has a living room with fully fitted open plan kitchen, 2 bedrooms, and bathroom with bath tub.

Features include "floating" parquet floors, built-in wardrobes, washer, dishwasher, ceramic cooktop, video intercom, telephone line, Internet, and satellite connection. Good transportation connections (a few bus stops to Hradčanská and Dejvická metro). Garage parking available at extra CZK 1900/mo. Monthly deposit for services and utilities CZK 4500.



\* Area of the unit according to the Civil Code. The area consists of the sum total area of the entire unit bounded by perimeter walls.

## Apartment Two-bedroom (3+kk)

Rented

83 m<sup>2</sup>, Prague 6, Břevnov, Patočkova

