



Apartment Three-bedroom (4+1)

€ 458 533 | CZK 11 500 000

86 m², Prague 9, Libeň, Čihákova





Apartment Three-bedroom (4+1)

€ 458 533 | CZK 11 500 000

86 m², Prague 9, Libeň, Čihákova

| | |
|------------------|--------|
| Total area | 89 m² |
| Floor area* | 86 m² |
| Balcony | 3 m² |
| Parking | - |
| Cellar | Yes |
| PENB | G |
| Reference number | 107875 |

This newly renovated three-bedroom apartment with two balconies is on the 1st floor of a well-maintained brick building with an elevator. Libeň is an attractive district full of contrasts, perfectly accessible by metro or tram. The O2 Arena, Galerie Harfa, Podviní Park, a bobsled track, a rope center, and a bike path offer a wide range of opportunities for active recreation.

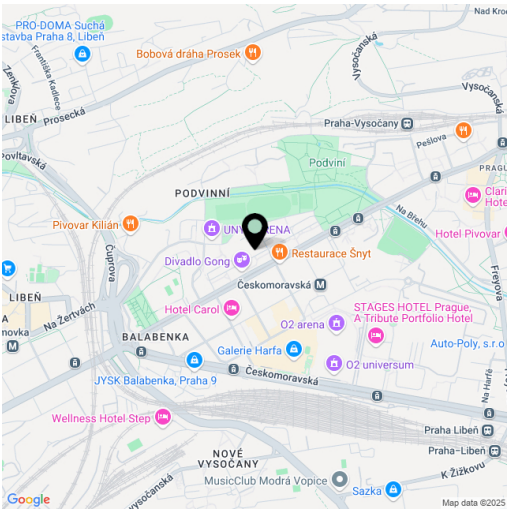
The apartment consists of a living room with access to a **balcony**, a kitchen (preparation for a kitchen unit) with a pantry, three bedrooms (two of which are south-facing), a bathroom with a shower, a separate toilet, and a hallway with a second balcony. All rooms are non-walkthrough. The purchase price also includes a **cellar storage unit**.

The apartment features plastic windows and vinyl flooring in a herringbone parquet design. Heating is provided by radiators connected to a central exchanger. The building, dating back to the 1940s, has been continuously renovated and includes **an elevator** and a shared **bike storage room**.

Libeň has a unique atmosphere, blending hidden village-like corners, industrial architecture, and elegant 1930s villas. The area offers excellent transport connections via the B line metro and trams, and caters to an **active lifestyle**. Nearby, you'll find the O2 Arena, Galerie Harfa shopping mall, the expansive Podviní Park with a rope center and bobsled track, a sports hall, and a rugby field. Nature lovers will appreciate the bike and nature trail along the Rokytka Stream, just 100 meters from the building. The surrounding amenities also include a medical center, numerous restaurants and cafés, kindergartens, elementary schools, and a high school.

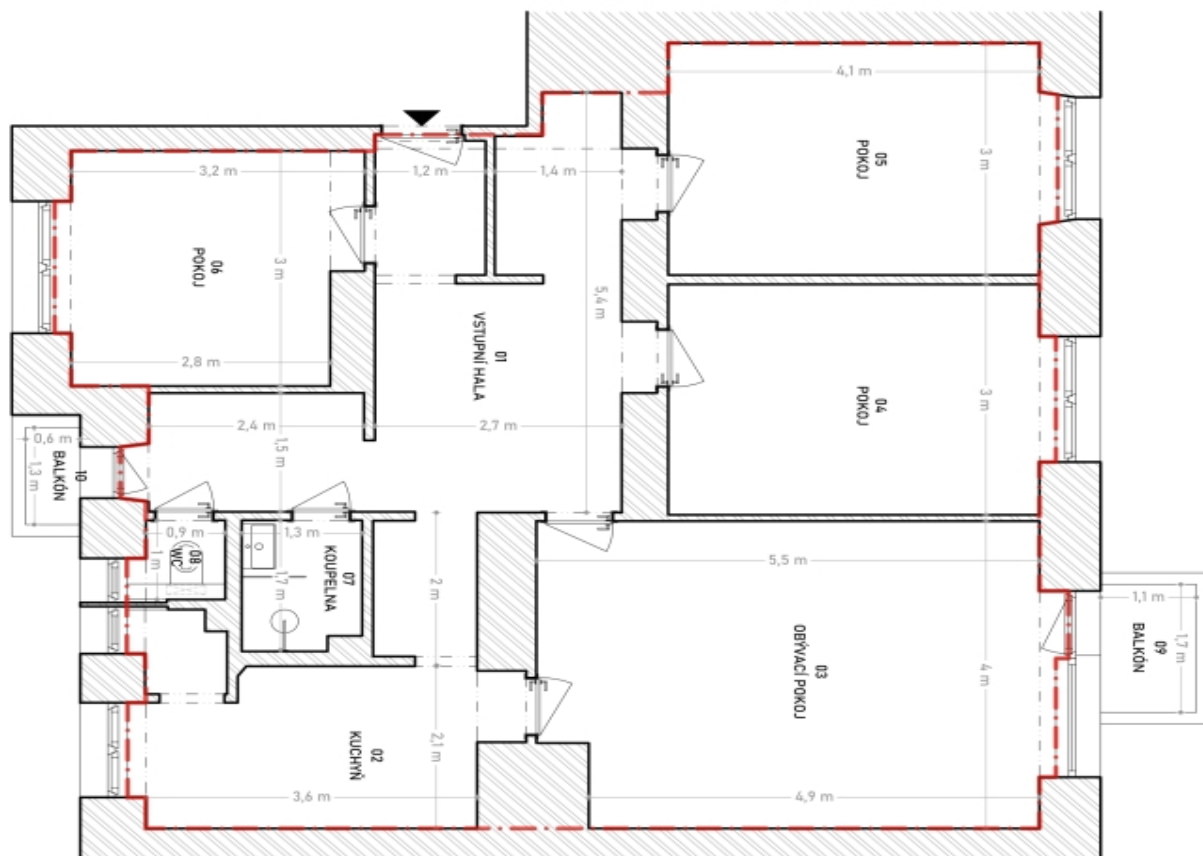
* Size of the unit according to the Housing Act.
The area consists of the sum total of the internal area of every room.

Floor area 89 m², balconies 3 m² and 1.8 m², cellar.



€ 458 533 | CZK 11 500 000

A vertical number line with tick marks at 0, 1, 2, 3, 4, 5, 6, and 7. A bracket is drawn from 0 to 6. To the right of the number line, there is a circle containing the number 1.



| VÝMĚRY MÍSTNOSTÍ | |
|------------------|--|
| BYTOVÁ JEDNOTKA | PLOCHA (m ²) |
| Č.M. | POPS |
| 01 | VSTUPNÍ HALA |
| 02 | KUCHYŇ |
| 03 | OBÝVACÍ POKOJ |
| 04 | POKOJ |
| 05 | POKOJ |
| 06 | POKOJ |
| 07 | KORIDOR |
| 08 | WC |
| | CELKOVÁ PLOCHA BYTOVÉ JEDNOTKY (m ²) |
| 09 | BALKÓN |
| 10 | BALKÓN |
| | CELKOVÁ PLOCHA BYTOVÉ JEDNOTKY (m ²) |
| | CELKOVÁ PLOCHA BYTOVÉ JEDNOTKY (m ²) |

Číslo a podrobnosti publikace týkající se stavebního podlaží: 264/2013 Sb. § 3.
Účinná právní norma publikace je stavební podlaží: 264/2013 Sb. § 3.

— + — HRAŇICE PODLAHOVÉ PLOCHY B.J., N.B.J.

 ZDĚNÉ STĚNY