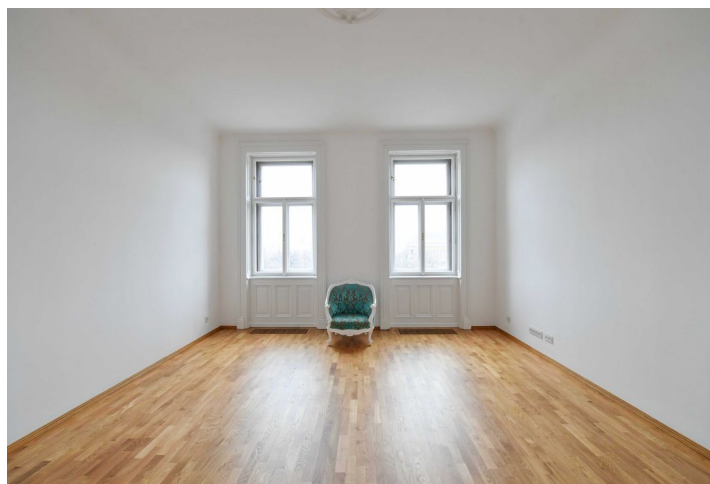


## Apartment One-bedroom (2+1)

€ 2 003 | CZK 50 000

83 m<sup>2</sup>, Prague 1, Malá Strana, Malostranské nábřeží



## Apartment One-bedroom (2+1)

€ 2 003 | CZK 50 000

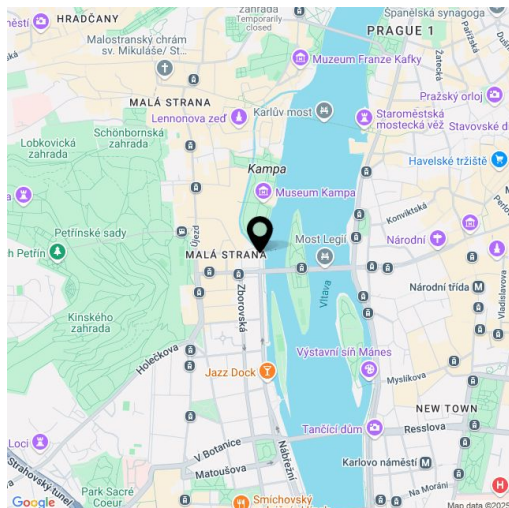
83 m<sup>2</sup>, Prague 1, Malá Strana, Malostranské nábřeží

Total area	83 m <sup>2</sup>
Parking	-
Cellar	-
Service price	Monthly deposit for services: CZK 1,500/person, water, and cooling: CZK 5,000. Electricity and gas are billed separately.
PENB	Not required
Reference number	107826
Available from	Immediately

Renovated apartment boasting the most wonderful location right on the Vltava riverbank on the edge of Kampa Island. This unfurnished apartment offers beautiful views of the Vltava River, Kampa Island, the National Theater, and Charles Bridge. Situated on the 4th floor of an 1890 Neo-Renaissance building with preserved original features and manned security. Within quick reach of the Petřín Hill gardens, Charles Bridge, Prague Castle, and other major historic sights. The location offers multiple cultural and social venues, and the city center and complete amenities are easily accessible on foot or by public transportation.

The apartment includes a walk-through living room/study/guest bedroom, a walk-through **clothes closet**, a bathroom (bathtub, underfloor heating), a spacious bedroom, a fully fitted kitchen with a dining area, a utility room, a separate toilet, and an entrance hall.

**Preserved original details, hardwood parquet floors, tiles, gas boiler, cooling, Miele appliances, dishwasher, induction stove top, video entry phone.**



\* Size of the unit according to the Housing Act.  
The area consists of the sum total of the internal  
area of every room.