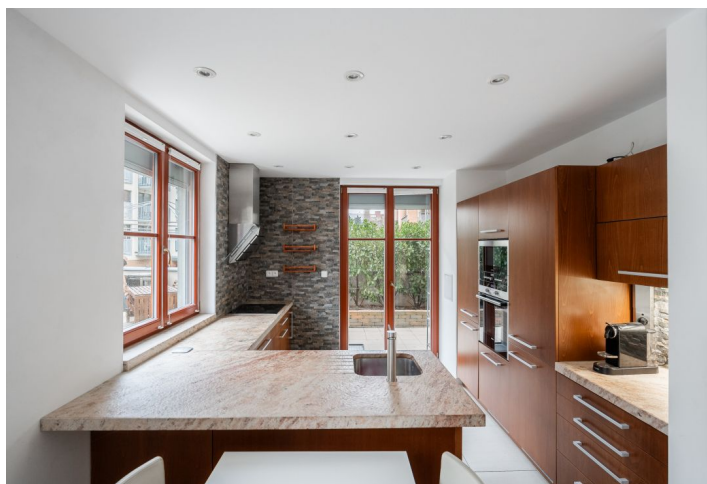


Apartment Two-bedroom (3+kk)

Rented

71.21 m², Prague 6, Dejvice, Lindleyova



Apartment Two-bedroom (3+kk)

Rented

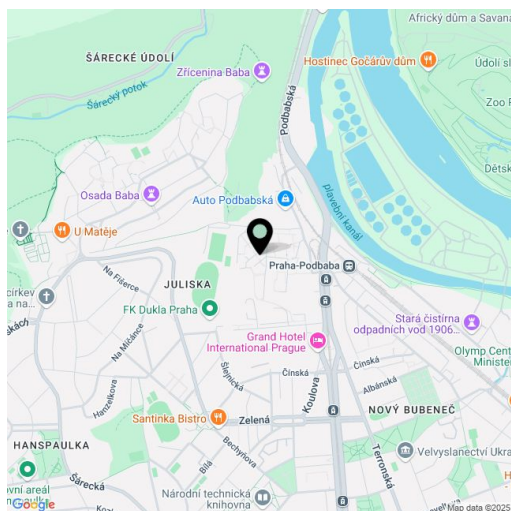
71.21 m², Prague 6, Dejvice, Lindleyova

Total area	71 m ²
Front garden	100 m ²
Parking	Garage parking
Garage	Yes
Cellar	Yes
Service price	Monthly deposit for services, water, heating, and electricity CZK 8,000.
PENB	C
Reference number	107806
Available from	Immediately

Benefiting from a garden, this furnished 2-bathroom apartment on the upper ground floor of a residential project with underground parking and plenty of greenery is nicely located in a pretty natural park-like area under the Baba neighborhood, with full amenities in close vicinity. Within quick reach of the Vltava riverbank, Šárka Valley, and Stromovka Park, a few short tram/bus stops from the Dejvická metro station (5 min. to the city center). Conveniently located for the airport and numerous Prague 6 international schools.

The interior features a living room with a fully fitted open plan kitchen and dining area, a master bedroom with a built-in wardrobe and an en-suite bathroom (bathtub, toilet), a bedroom with a built-in wardrobe, a family bathroom (walk-in shower, bidet, toilet), a utility room, and an entrance hall with a built-in wardrobe. The **garden** is accessible from the living room and one bedroom.

Hardwood floors, tiles, automatic exterior roller blinds, pleated blinds, automatic awning, central heating, Siemens appliances, washer, dryer, Bosch dishwasher, induction stove top, microwave oven, video entry phone, **cellar**, garden house, lawn mower, automatic irrigation, misting system, security cameras in the building. A **garage parking** space is included.



* Area of the unit according to the Civil Code. The area consists of the sum total area of the entire unit bounded by perimeter walls.