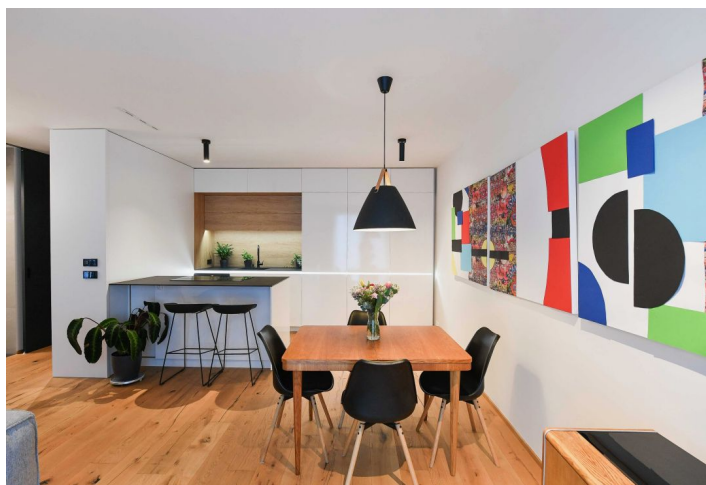
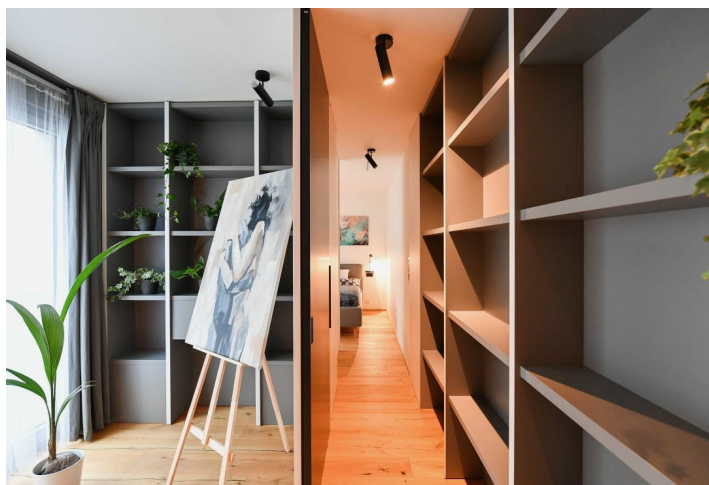
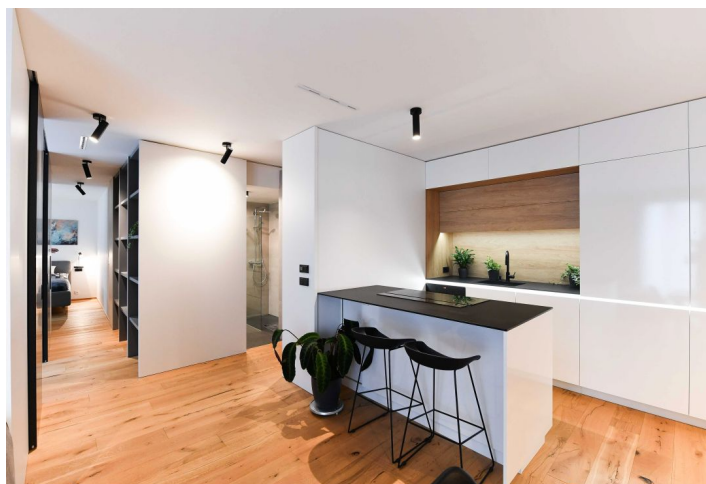


## Apartment Two-bedroom (3+kk)

Rented

64.6 m<sup>2</sup>, Prague 8, Karlín, Křižíkova



## Apartment Two-bedroom (3+kk)

Rented

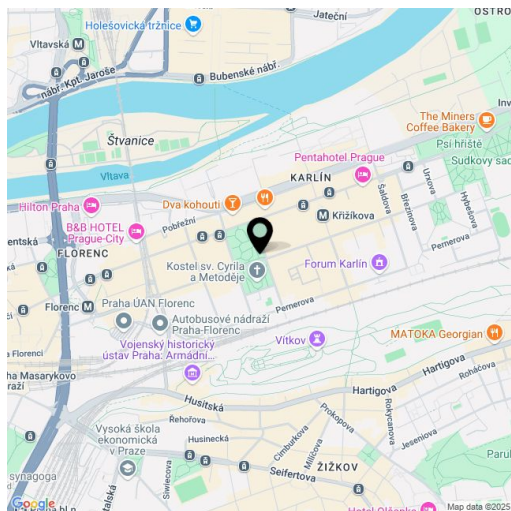
64.6 m<sup>2</sup>, Prague 8, Karlín, Křižíkova

Total area	65 m <sup>2</sup>
Parking	Garage parking
Garage	Yes
Cellar	Yes
Service price	Monthly deposit for services, water, and heating: CZK 7,500. Electricity is billed separately.
PENB	B
Reference number	107747
Available from	Immediately

This fully furnished 2-bedroom apartment designed by an architect is on the 4th floor of the DVA DOMY residential project with an elevator and parking. Located in the highly sought-after lively neighborhood of Karlín, mere steps from Karlínské Square and the St. Cyril and Methodius Church, just a few minutes' walk from the Křižíkova metro station (line B) and tram stop, and within easy reach of the city center, complete amenities, numerous business centers, and Vítkov Park with a bike path. Local amenities include plenty of greenery, quality restaurants, trendy bistros, cafes, and cultural venues incl. the multipurpose Forum Karlín.

The apartment features a living room with a fully fitted open plan kitchen and dining area, a master bedroom with built-in wardrobes, a study/guest bedroom including a built-in wardrobe with a wall bed, a bathroom (walk-in shower), a separate toilet, and an entrance hall with a large built-in wardrobe.

Heat recovery ventilation, hardwood floors, tiles, ample built-in storage, central heating, underfloor heating throughout, washer, dryer, custom made kitchen, dishwasher, induction stove top, **cellar**, wiring for a charger for electric cars in the garage. A **garage parking** space is available at CZK 4,000/month.



\* Area of the unit according to the Civil Code. The area consists of the sum total area of the entire unit bounded by perimeter walls.