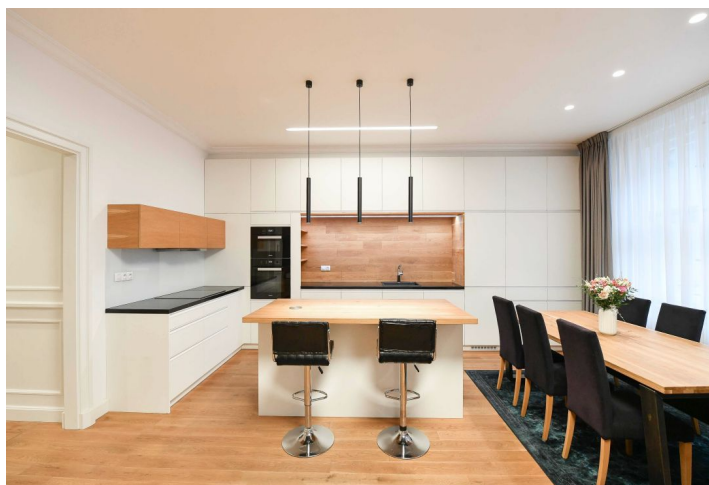


Apartment Three-bedroom (4+kk)

€ 3 204 | CZK 80 000

166 m², Prague 1, Staré Město, Dlouhá



Apartment Three-bedroom (4+kk)

€ 3 204 | CZK 80 000

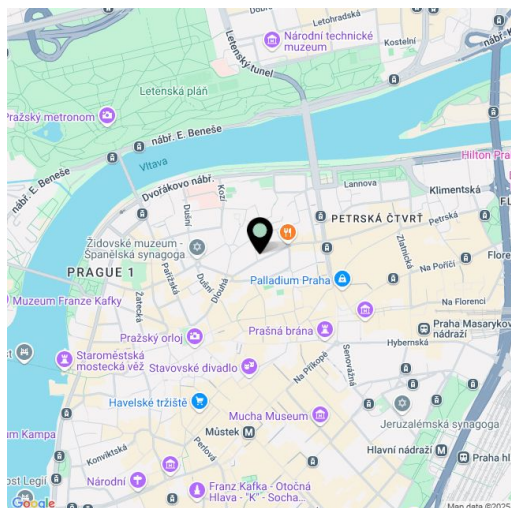
166 m², Prague 1, Staré Město, Dlouhá

Total area	166 m ²
Parking	Garage parking is available
Garage	Yes
Cellar	-
Service price	Monthly deposit for services, water, and heating: CZK 12,500. Electricity is billed separately.
PENB	E
Reference number	107626
Available from	Immediately

This high-standard furnished 2-bathroom apartment is on the 3rd floor of the unique, completely renovated Palác Dlouhá, an Art Deco style building with a reception and security in the heart of Old Town. Conveniently located in the center of Prague, just minutes from Old Town Square, luxurious Pařížská Street, and the Náměstí Republiky metro station, with excellent shopping and entertainment opportunities. A prestigious address surrounded by a top selection of restaurants, cafes, delis, boutiques, and other services, within walking distance of the Vltava riverbank and Letná Park.

The interior includes a living room with a fully fitted open plan kitchen and dining area, a master bedroom with an en-suite bathroom (walk-in shower, toilet with a bidet shower) and windows facing the quiet courtyard, a second bedroom, and a spacious fitted **walk-in closet**/third bedroom. There is a family bathroom (bathtub, walk-in shower, toilet with a bidet shower), a spacious hall, a large utility room, and an entrance hall.

Hardwood floors, tiles, security entry door, central heating, **Miele** appliances, washer, dryer, dishwasher, induction stove top, combination oven (steam/microwave). An on-site **garage parking** space is available at CZK 6,000/month.



* Size of the unit according to the Housing Act.
The area consists of the sum total of the internal area of every room.