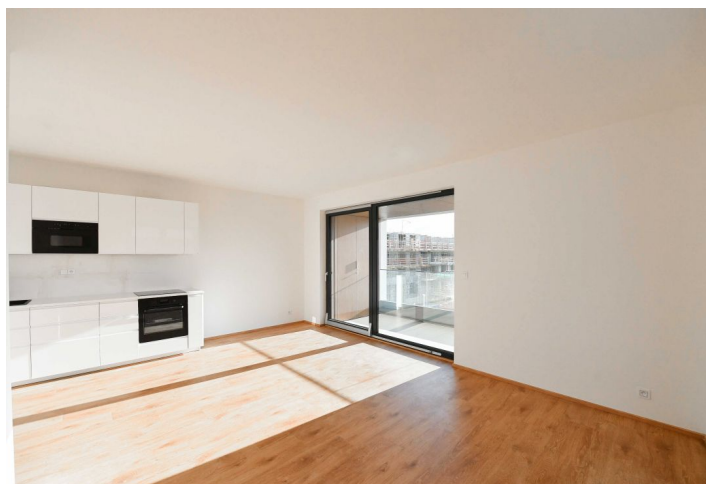


## Apartment Two-bedroom (3+kk)

Rented

83 m<sup>2</sup>, Prague 3, Žižkov, Tetauerova



## Apartment Two-bedroom (3+kk)

Rented

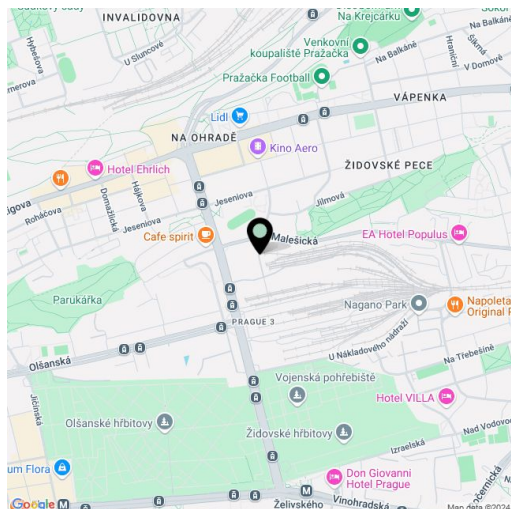
83 m<sup>2</sup>, Prague 3, Žižkov, Tetauerova

Total area	101 m <sup>2</sup>
Floor area*	83 m <sup>2</sup>
Balcony	9 m <sup>2</sup>
Loggia	9 m <sup>2</sup>
Parking	Garage parking.
Garage	Yes
Cellar	4 m <sup>2</sup>
Service price	Monthly deposit for services, water, and heating: CZK 7,000. Electricity is billed separately.
PENB	B
Reference number	107235
Available from	Immediately

Benefiting from a balcony and a loggia, this brand-new unfurnished air-conditioned 2-bedroom apartment is on the 2nd floor of a new residential building with an elevator and a nicely landscaped courtyard. Situated in a rapidly developing area next to the Nákladové nádraží Žižkov (Žižkov freight railway station), near Basilejské Square and close to the Parukářka and Židovské Pece parks. Located a few tram stops away from the Želivského and Palmovka metro stations, about 15 minutes by bus to the city center (bus stop is moments from the building).

The apartment includes a living room with a fully fitted open plan kitchen and a south-facing **enclosed balcony** with a storage room, a master bedroom with a north-facing **balcony** and views of the courtyard, a second bedroom, a bathroom (bathtub, walk-in shower, balcony access), a separate toilet, a utility room, and an entrance hall with a wardrobe.

**Air-conditioning, heat recovery ventilation, vinyl floors, tiles, automatic exterior blinds, central heating, underfloor heating, dishwasher, induction stove top, microwave oven, alarm, cellar. A garage parking space is included.**



\* Area of the unit according to the Civil Code. The area consists of the sum total area of the entire unit bounded by perimeter walls.