

## Industrial space

Ask for price

1464 m<sup>2</sup>, Vyškov, Rousínov, Tománkova

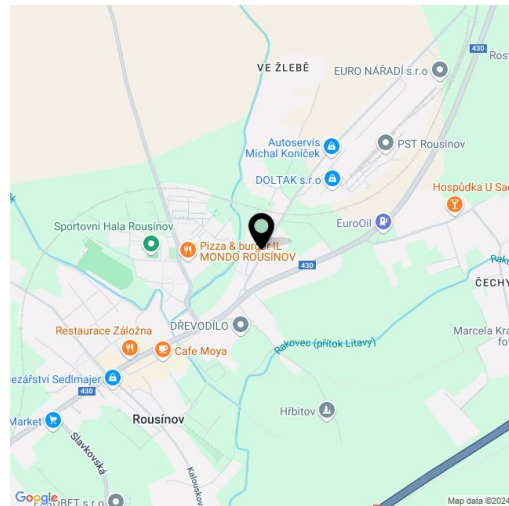


## Industrial space

Ask for price

1 464 m<sup>2</sup>, Vyškov, Rousínov, Tománkova

Total area	1 464 m <sup>2</sup>
Available area for rent	1 464 m <sup>2</sup>
Ceiling height	9.8 m
Floor loading capacity	10 t/m <sup>2</sup>
Column grid structure	—
Structure	Reinforced concrete structure
PENB	G
Reference number	107196



**1,464 sq.m.** of industrial, warehouse and office space for lease in the industrial area situated close to Brno. Premises are suitable for light industry, logistics and business activity.

**Location:**

The park is located in Rousínov, about 20 km east of Brno, close to the D1 highway.

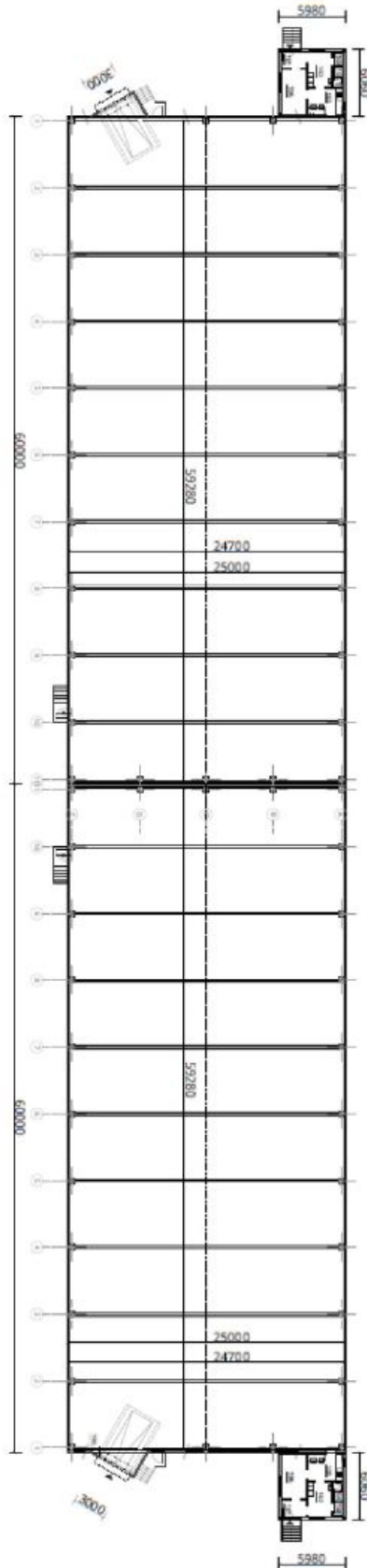
**Features and Services:**

- Gas heating
- Clear height 9,8 m
- Floor loading capacity 10 t / m<sup>2</sup>
- Loading ramps
- Handling area
- Possibility of direct entrance for vans
- sectional doors
- Parking for trucks
- Parking for cars

**Office:**

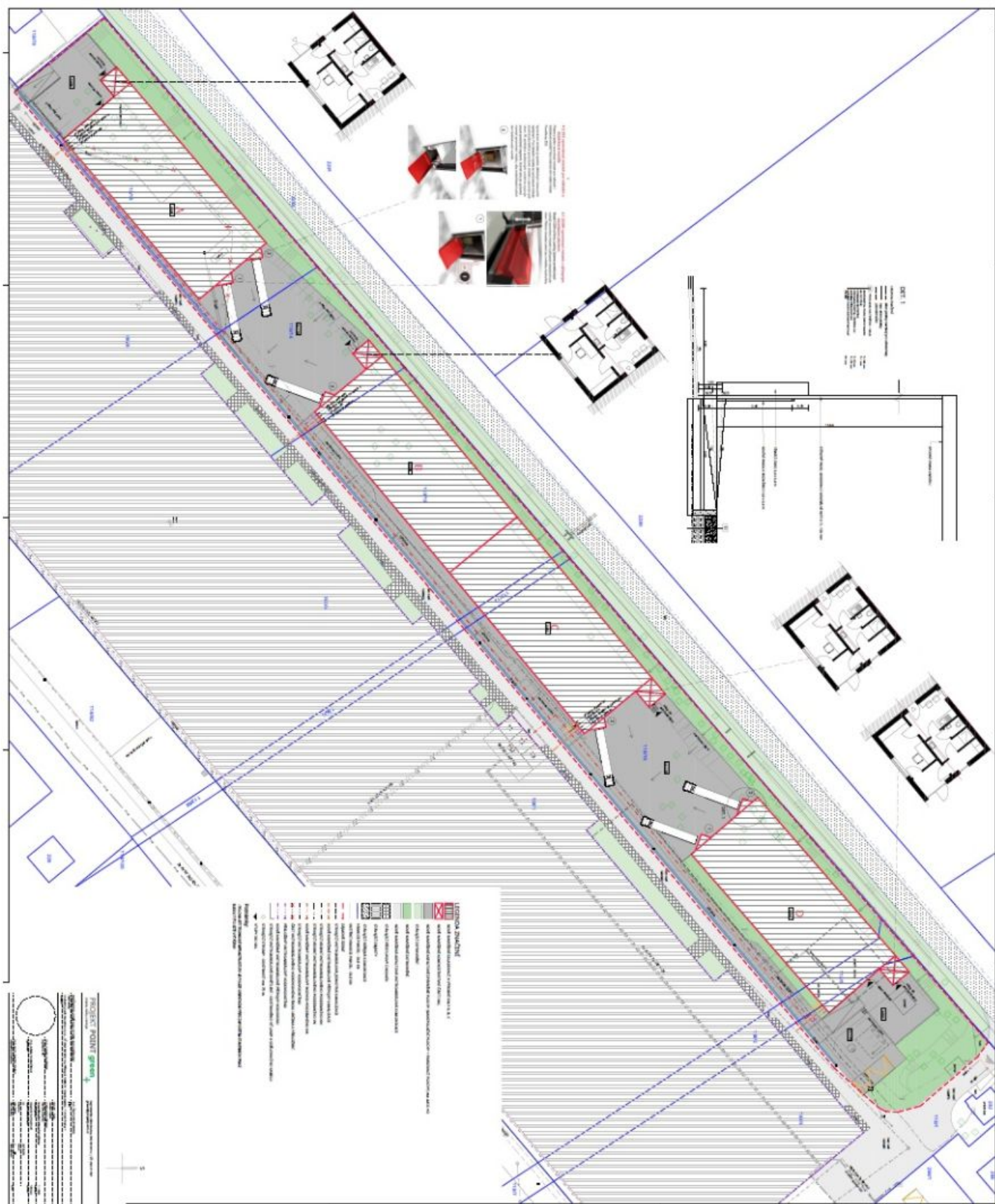
Variable space

Lessee pays no commission.



Půdorys halý B, C

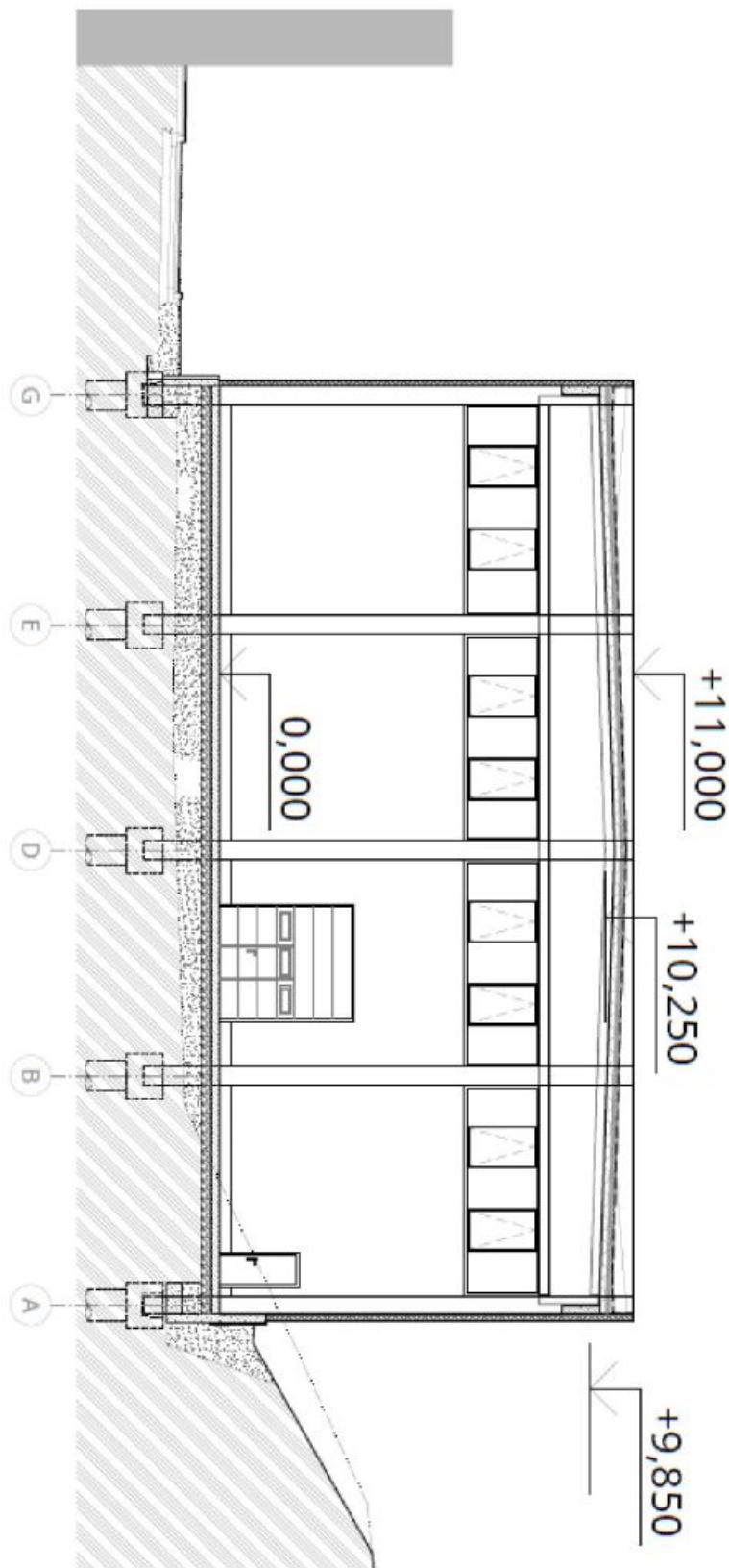
1464 m<sup>2</sup>, Vyškov, Rousínov, Tománkova



Industrial space

1464 m<sup>2</sup>, Vyškov, Rousínov, Tománkova

Ask for price



Řez Hal A, B, C, D

1464 m<sup>2</sup>, Vyškov, Rousínov, Tománkova

