



## Industrial space

1 464 m<sup>2</sup>, Vyškov, Rousínov, Tománkova

Ask for price





## Industrial space

1 464 m<sup>2</sup>, Vyškov, Rousínov, Tománkova

**Ask for price**

<b>Total area</b>	1 464 m <sup>2</sup>
<b>Available area for rent</b>	1 464 m <sup>2</sup>
<b>Ceiling height</b>	9.8 m
<b>Floor loading capacity</b>	10 t/m <sup>2</sup>
<b>Column grid structure</b>	—
<b>Structure</b>	Reinforced concrete structure
<b>PENB</b>	G
<b>Reference number</b>	107192

**1,464 m<sup>2</sup>** of industrial, warehouse and office space for lease in the industrial area situated close to Brno. Premises are suitable for light industry, logistics and business activity.

### Location:

The park is located in Rousínov, about 20 km east of Brno, close to the D1 highway.

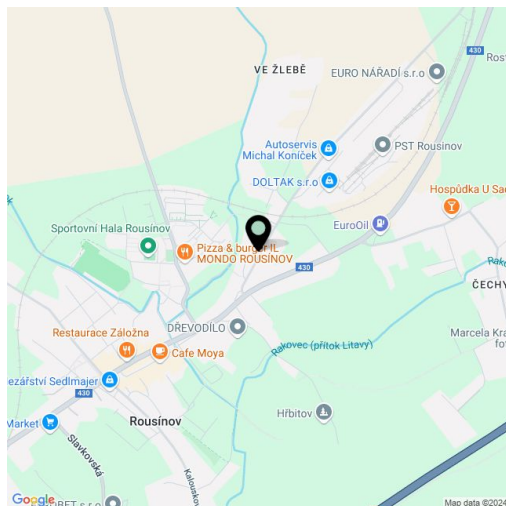
### Features and Services:

- Gas heating
- Clear height 9,8 m
- Floor loading capacity 10 t/m<sup>2</sup>
- Loading ramps
- Handling area
- Possibility of direct entrance for vans
- sectional doors
- Parking for trucks
- Parking for cars

### Office:

Variable space

Lessee pays no commission.

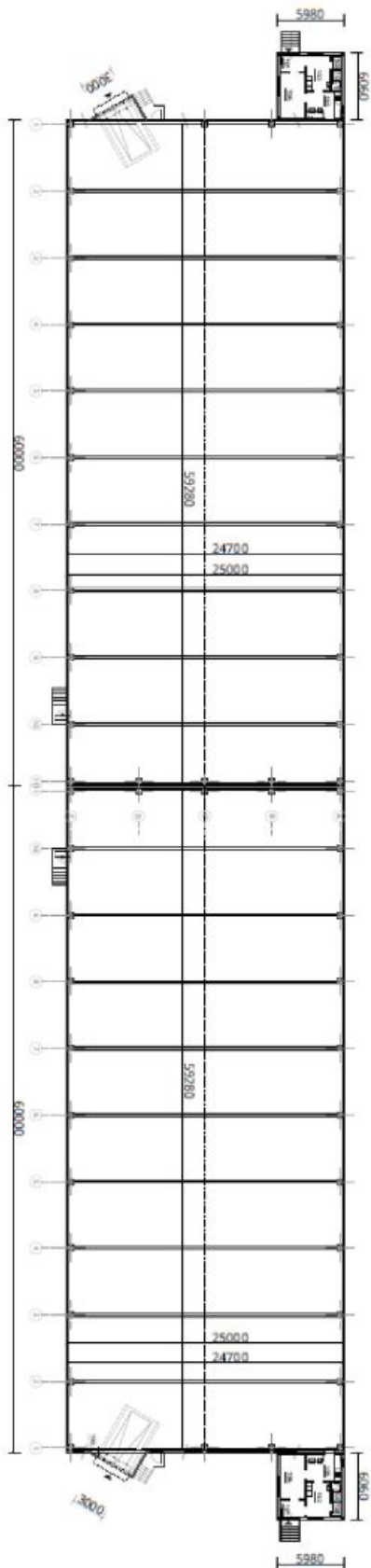




# Industrial space

1 464 m<sup>2</sup>, Vyškov, Rousínov, Tománkova

Ask for price



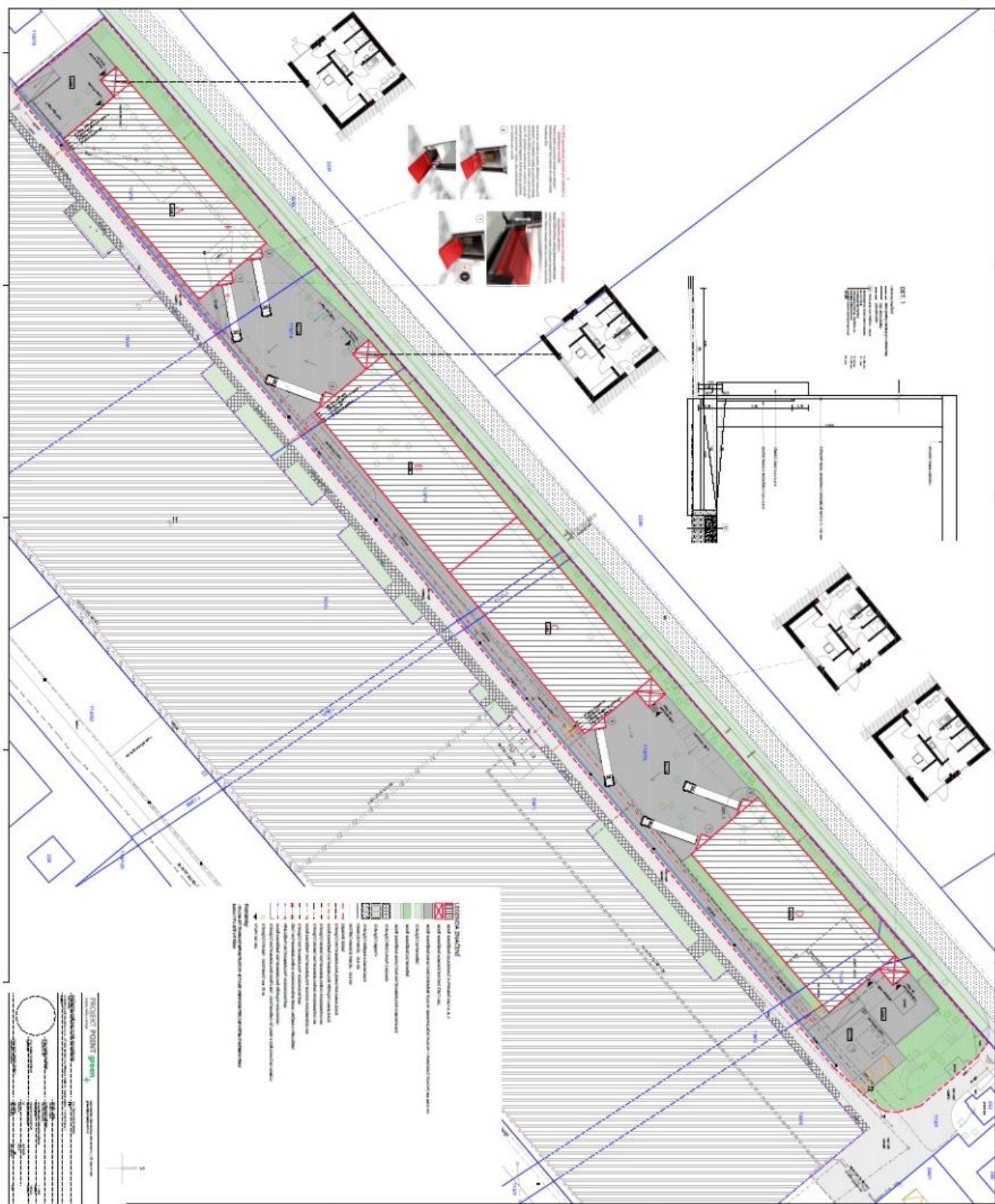
Půdorys halý B, C



# Industrial space

1464 m<sup>2</sup>, Vyškov, Rousínov, Tománkova

Ask for price

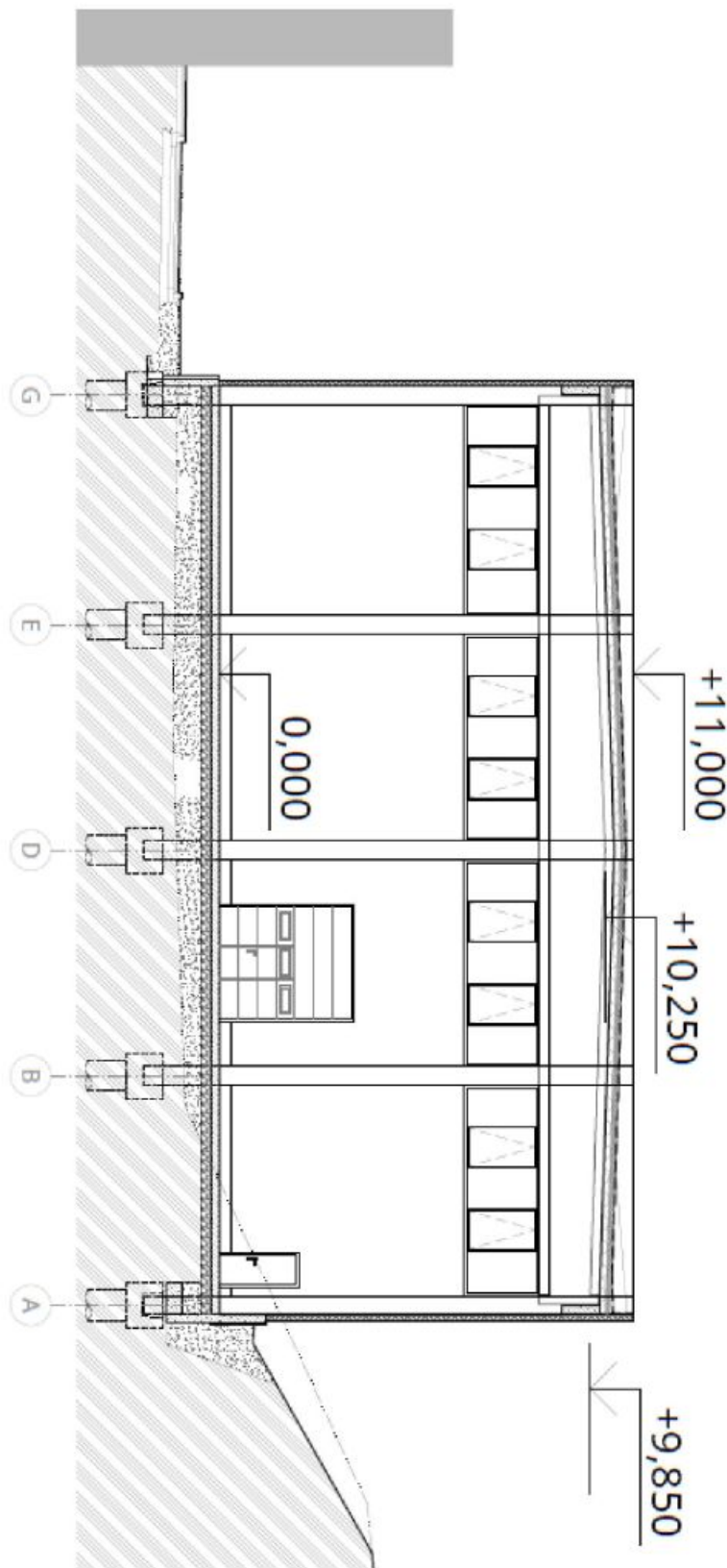




# Industrial space

1 464 m<sup>2</sup>, Vyškov, Rousínov, Tománkova

Ask for price



Řez Hal A, B, C, D