

Apartment Four-bedroom (5+kk)

€ 1 381 935 | CZK 34 500 000

177 m², Prague 1, Malá Strana, Vítězná

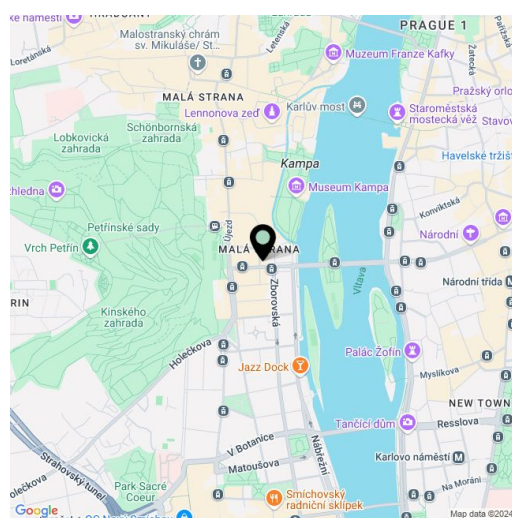


Apartment Four-bedroom (5+kk)

€ 1 381 935 | CZK 34 500 000

177 m², Prague 1, Malá Strana, Vítězná

Total area	209 m²
Floor area*	177 m²
Terrace	32 m²
Parking	-
Cellar	20 m²
PENB	G
Reference number	107182



* Size of the unit according to the Housing Act.

The area consists of the sum total of the internal area of every room.

The rooftop terrace of this exclusive nearly 200 m² penthouse offers a unique view of Prague Castle and Petřín Hill. The apartment occupies the entire 4th floor of an intimate 19th-century Neo-Renaissance building with an elevator and only six units. It is situated in Malá Strana, the oldest and most beautiful part of Prague, near Kampa and the Petřín Gardens.

The interior of the penthouse offers maximum flexibility and can be adapted to the individual requirements of the new owner. It is offered in shell & core condition, meaning without final surface finishes but with fully prepared utility connections, including gas. The layout allows for a practical division between the social and private zones. The social area connects the entrance hall with the living room, kitchen, and dining area, from which a large French window leads to a north-facing terrace overlooking a quiet courtyard. This terrace can serve as a pleasant retreat from the sun during the summer months. The private section may include a bedroom with a walk-in closet and en-suite bathroom, as well as up to two additional bedrooms with private bathrooms. The apartment also comes with a rooftop terrace offering a unique view of Prague Castle.

The apartment features electrically operated windows with automatic closing in case of rain or strong winds. The living room is enhanced by a floor-to-ceiling glass portal (triple-glazed) with two sliding panels leading to the adjoining terrace, with preparation for internal electric blinds. The current flooring is finished with premium Fermacell leveling, designed for electric heating foil installation. Additionally, there is preparation for a gas fireplace, air conditioning, and ventilation system. The price also includes a spacious cellar located on the 1st underground floor of the building.

The unique location of Malá Strana, just a few minutes' walk from Kinských Garden, the Petřín funicular, and Kampa Park. The area offers full amenities, including public and private schools, boutique shops, excellent restaurants, and cozy cafés. Within walking distance, you will also find the Nový Smíchov shopping and entertainment center, the French Lycée, Goethe-Institut, art galleries, museums, and theaters. The nearby Střelecký Island has become a local entertainment hub, featuring a summer open-air cinema, a children's playground, a restaurant, and a café.

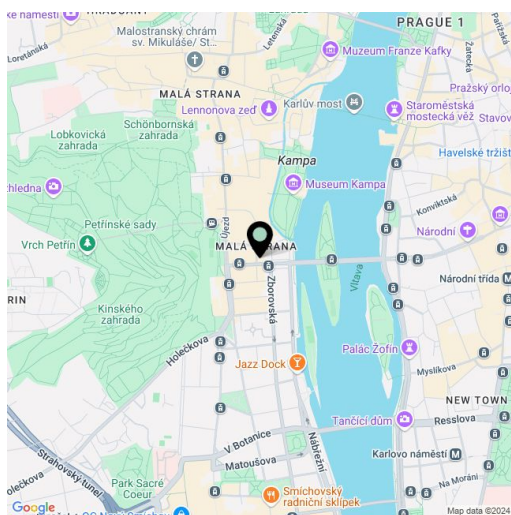
Floor area according to the survey 177.9 m² (according to the owner's declaration 169 m²), terraces 18.5 m² and 13.5 m², storage approx. 20 m².

Apartment Four-bedroom (5+kk)

€ 1 381 935 | CZK 34 500 000

177 m², Prague 1, Malá Strana, Vítězná

Total area	209 m ²
Floor area*	177 m ²
Terrace	32 m ²
Parking	-
Cellar	20 m ²
PENB	G
Reference number	107182



* Size of the unit according to the Housing Act.

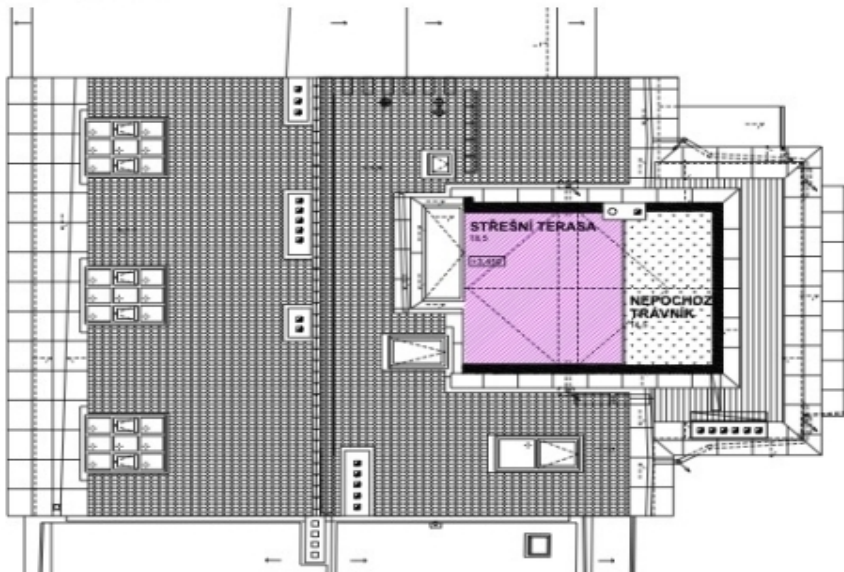
The area consists of the sum total of the internal area of every room.

Apartment Four-bedroom (5+kk)

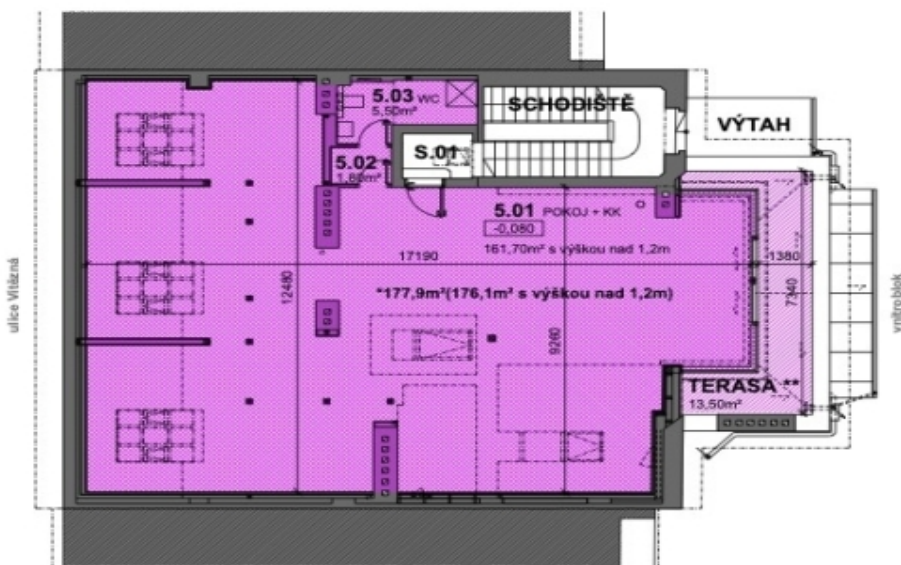
€ 1 381 935 | CZK 34 500 000

177 m², Prague 1, Malá Strana, Vítězná

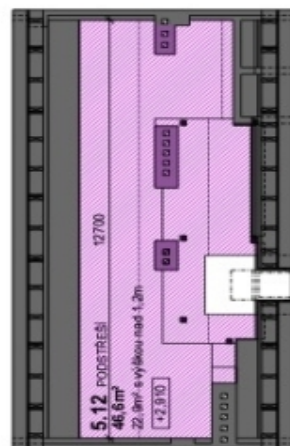
Pohled na střechu



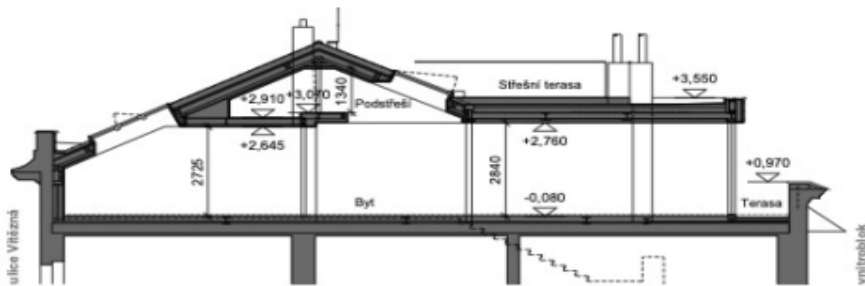
Půdorys bytu



Půdorys podstřeší



Řez bytem



POPIS BYTOVÉ JEDNOTKY

- *177,9m²** PODLAHOVÁ PLOCHA bytů č.6
- 78,6m²** DALŠÍ PŘIDRUŽENÉ PLOCHY BYTU:
 - **TERASA, **STŘEŠNÍ TERASA, PODSTŘEŠÍ
- 256,5m²**

KONSTRUKCE

* PODLAHOVÁ PLOCHA DLE VÝHLÁŠKY 366/2013Sb.
 ** VENKOVNÍ TERASA JE VE VÝHRADNÍM UŽÍVÁNÍ BYTU č.6
 pozn.: ±0,000 je úroveň stávajícího bytu



±0,000 = 213,80 m.n.m. (Bpv), souřadnicový systém JTSK

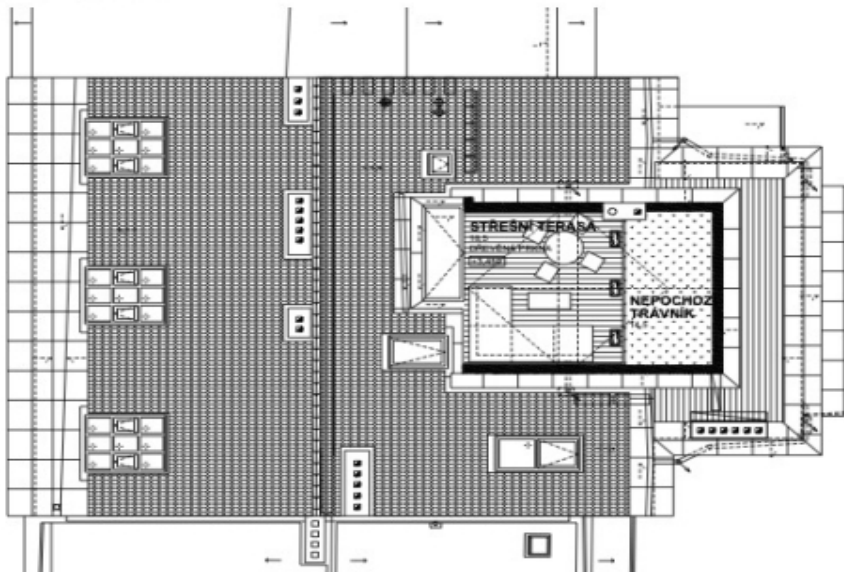
m 1:125, formát a3

Apartment Four-bedroom (5+kk)

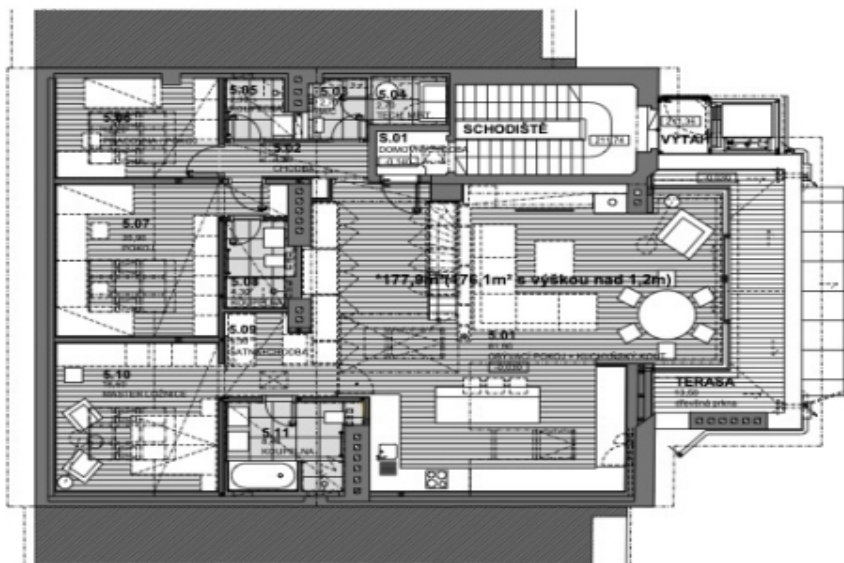
€ 1 381 935 | CZK 34 500 000

177 m², Prague 1, Malá Strana, Vítězná

Pohled na střechu



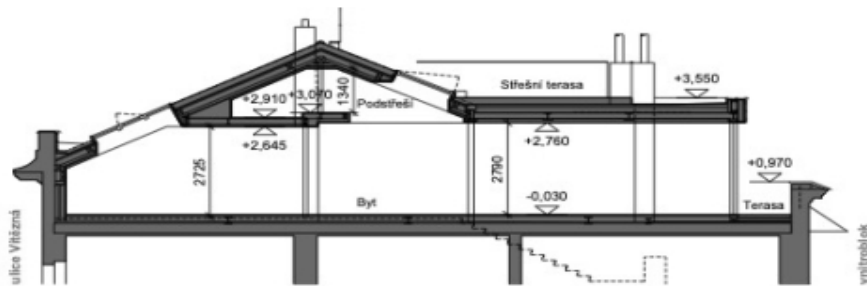
Půdorys bytu



Půdorys podstřeší



Řez bytem



POPIS BYTOVÉ JEDNOTKY

- *177,9m² PODLAHOVÁ PLOCHA byt č.6
- 46,6m² PLOCHA PODSTŘEŠÍ
- **13,5m² TERASA
- **18,5m² STŘEŠNÍ TERASA
- 256,5m² CELKEM

* PODLAHOVÁ PLOCHA DLE VÝHLÁŠKY 366/2013Sb.
** VENKOVNÍ TERASA JE VE VYHRADNĚM UŽÍVÁNÍ BYTU č.6
pozn.: 10,000 je úroveň stávajícího bytu

±0,000 = 213,80 m.n.m. (Bpv), souřadnicový systém JTSK

m 1:125, formát a3