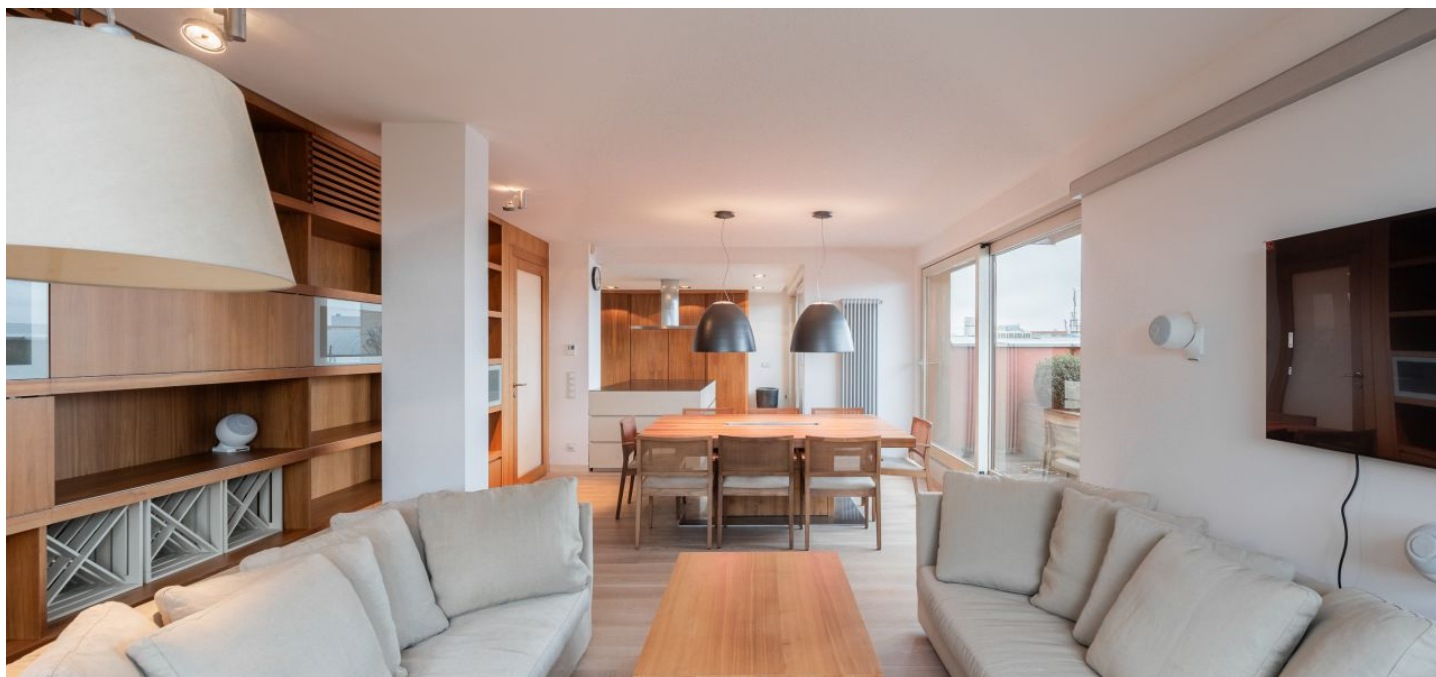


Apartment Three-bedroom (4+kk)

Rented

165 m², Prague 9, Vysočany, Paříkova



Apartment Three-bedroom (4+kk)

Rented

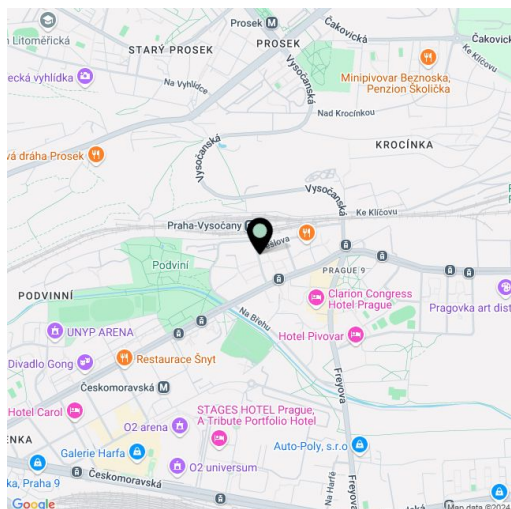
165 m², Prague 9, Vysočany, Paříkova

Total area	245 m²
Floor area*	165 m²
Balcony	4 m²
Terrace	76 m²
Parking	Garage parking.
Garage	Yes
Cellar	-
Service price	Monthly deposit for services, water, and heating: CZK 18,000. Electricity is billed separately.
PENB	C
Reference number	107167
Available from	Immediately

This completely furnished 3-bathroom apartment with 2 terraces, a balcony, and far-reaching views including of the Prague Castle and Petřín Hill is on the 7th floor of the Rubeška 2 Residence, a modern building with an elevator and a 24/7 reception in Vysočany, Prague 9, near a railway station. Located in close vicinity of the English College in Prague and a few min. walk from Podviní Park, in an area with full amenities and quick connections to the city center, just moments from the Vysočanská metro station and trams, within walking distance of the Fénix shopping mall.

The interior features a living room with a fully fitted open plan kitchen and dining area, a master bedroom with built-in wardrobes and an open en-suite bathroom (bathtub, walk-in shower, bidet, toilet), a second bedroom with built-in wardrobes and an en-suite bathroom (bathtub, toilet), a study/guest bedroom with a balcony, a family bathroom (walk-in shower, toilet), a fitted walk-in closet, and a spacious entrance hall with built-in wardrobes. The living room and two bedrooms have access to one of the terraces.

Hardwood oak floors, large-format marble tiles, built-in wardrobes and storage, security entry door, central heating, underfloor heating in the bathrooms, Miele appliances, washer, dryer, Minotti Italian kitchen, stone kitchen counter top, dishwasher, induction stove top, steam oven, coffee maker, two refrigerators with freezers, TV, alarm. A separate garage parking space is available at CZK 5,000/month.



* Size of the unit according to the Housing Act. The area consists of the sum total of the internal area of every room.