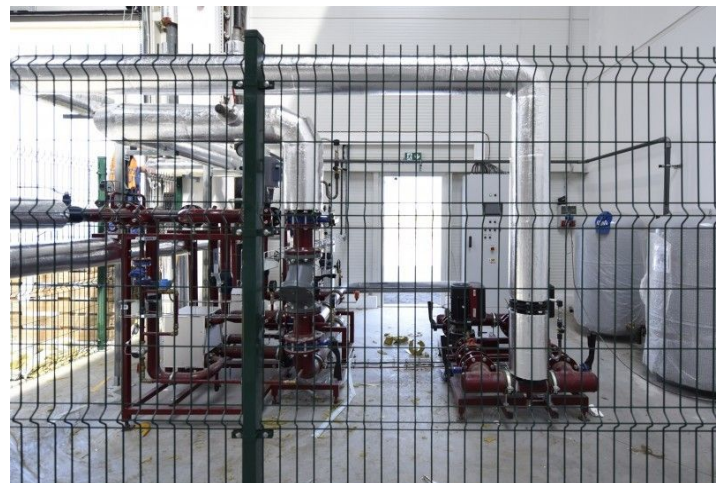
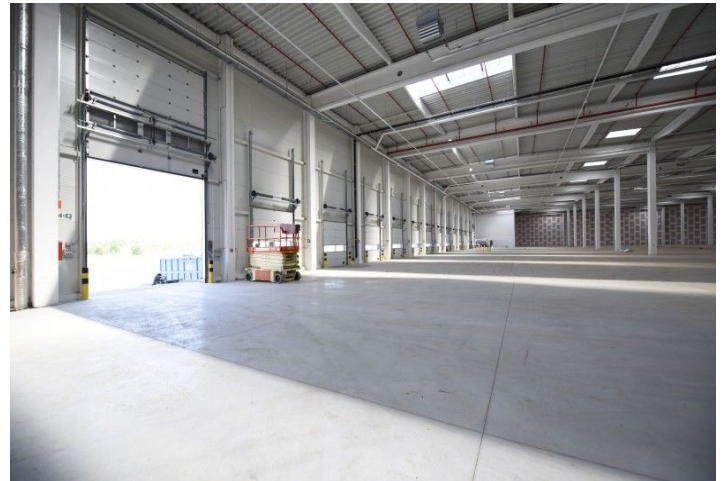




## Warehouse space

5 168 m<sup>2</sup>, Ostrava-město, Ostrava, Halasova

Ask for price





## Warehouse space

5 168 m<sup>2</sup>, Ostrava-město, Ostrava, Halasova

[Ask for price](#)

<b>Total area</b>	5 168 m <sup>2</sup>
<b>Available area for rent</b>	5 168 m <sup>2</sup>
<b>Office area</b>	290 m <sup>2</sup>
<b>Ceiling height</b>	10 m
<b>Floor loading capacity</b>	5 t/m <sup>2</sup>
<b>Column grid structure</b>	—
<b>Structure</b>	Reinforced concrete structure
<b>PENB</b>	B
<b>Reference number</b>	106967

**4,878 m<sup>2</sup>** of warehouse and **290 m<sup>2</sup>** of office space incl. background for lease in an area located in Ostrava - Vítkovice. After a demanding rehabilitation, the 44ha brownfield is ready for the construction of a modern commercial-industrial park. The tenants of the park have at their disposal premises of various sizes suitable for companies operating in a wide range of commercial and production act. Available immediately.

### Location:

The park is located in the wider center of Ostrava in the area of Ostrava Vítkovice with excellent transport accessibility. Direct connection to the highway leading to Brno and Poland. There are 3 entrances to the park. There is a tram stop near the complex.

### Features and Services:

- All infrastructure available on site
- High standards of buildings
- A functional railway along the eastern perimeter of the compound
- A large number of parking spaces for cars and trucks

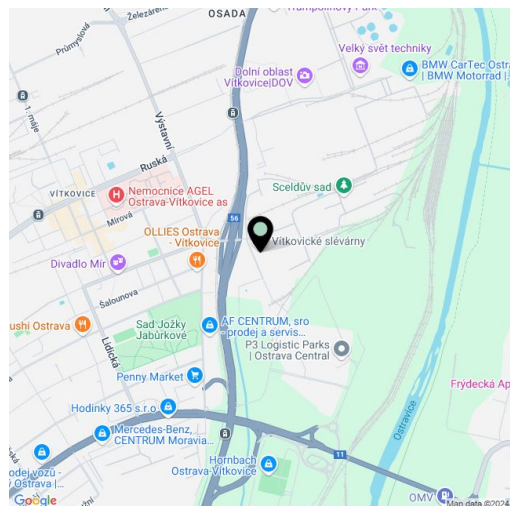
### Industrial/Warehouse space:

- Flexible unit layouts
- Variable units from 1,500 m<sup>2</sup>
- 4 drive-ins
- 16 docks with loading bridge
- Floor load: 5t/m<sup>2</sup>
- Clear height of storage areas: 10-12 m
- Column module: 24×12 m
- Loading yard: 35 m
- Sprinklersystem
- Infrared emitters /ceiling heating units
- BREEAM Very Good

### Office:

- Flexible office layout
- Air-conditioning

Rental and service charges listed without VAT. Lessee pays no commission.

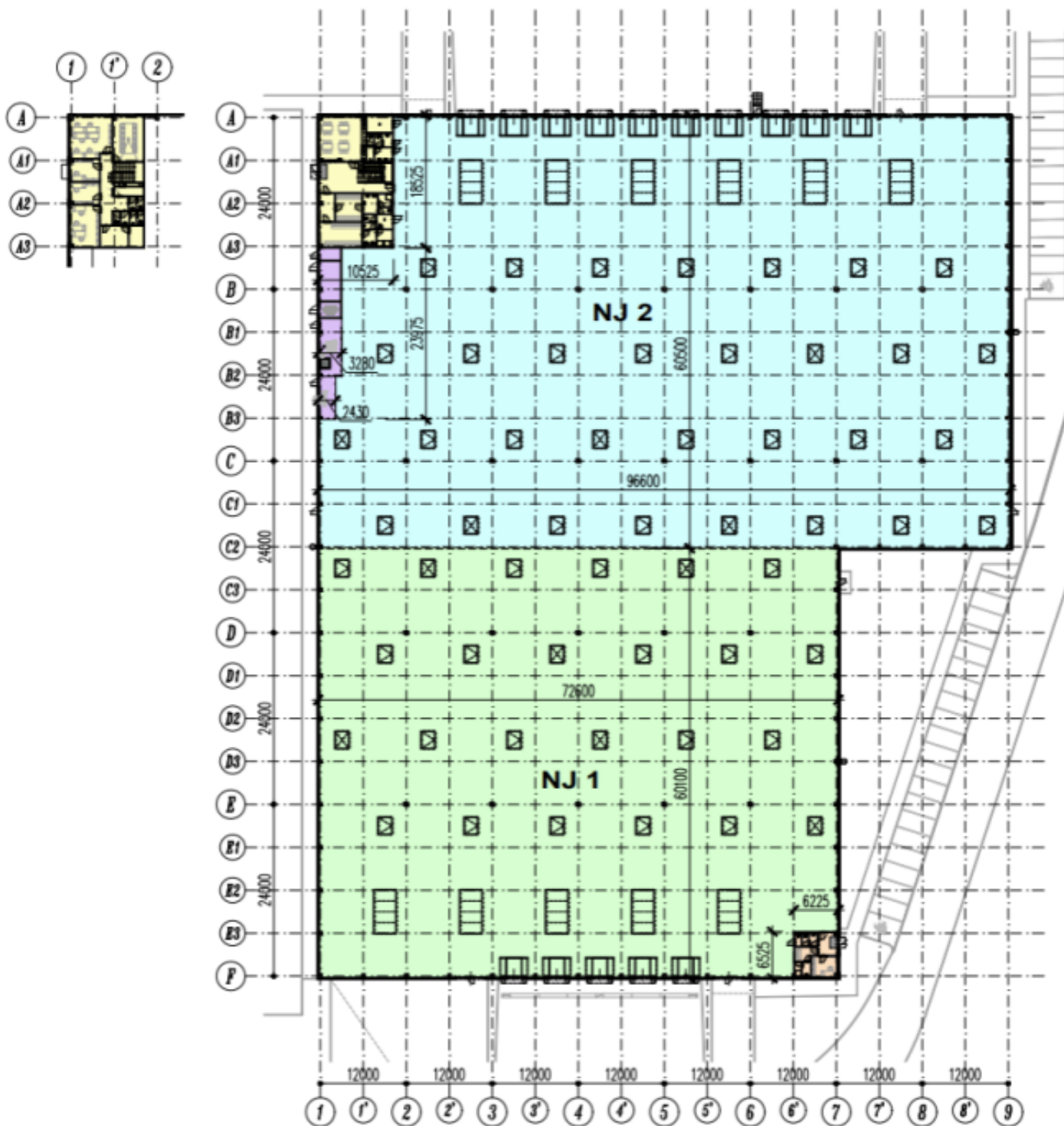




# Warehouse space

5 168 m<sup>2</sup>, Ostrava-město, Ostrava, Halasova

Ask for price







## Warehouse space

5 168 m<sup>2</sup>, Ostrava-město, Ostrava, Halasova

Ask for price



Budova	Zastavěná plocha m <sup>2</sup>
L1	28 516
L2	29 524
L3	16 438
M1	10 516
M2	14 884
M3	14 884
M4	10 516
S1	38 444
S2	7 564
S3	4 180
S4	4 180
S5	4 180
XS1	1 444
XS2	1 444
<b>Celkem</b>	<b>152 114</b>