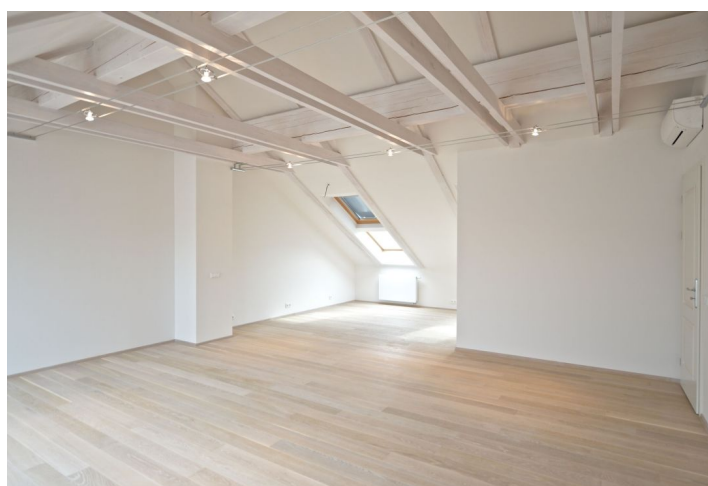


## Apartment Two-bedroom (3+kk)

Rented

138.4 m<sup>2</sup>, Prague 1, Nové Město, Petřská



## Apartment Two-bedroom (3+kk)

Rented

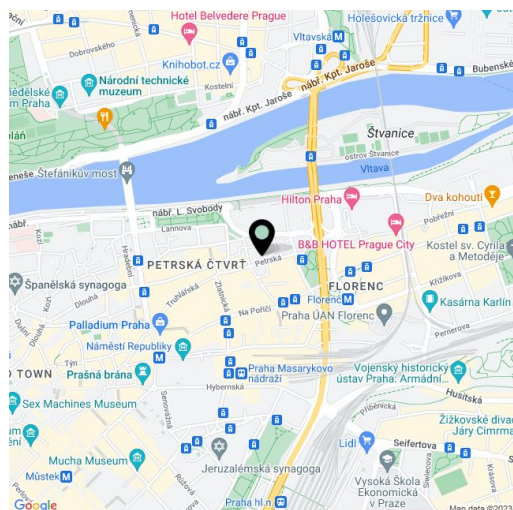
138.4 m<sup>2</sup>, Prague 1, Nové Město, Petřská

Total area	138 m <sup>2</sup>
Parking	Available garage parking.
Garage	Yes
Cellar	Yes
Service price	Deposit for common building charges, heating and water CZK 7,000/month. Electricity - transferred to the tenant.
PENB	G
Reference number	10675
Available from	Immediately

This air-conditioned fully refurbished attic apartment is situated on the fifth floor of a completely renovated traditional building with an elevator. Located on a quiet street in the city center, within easy reach of quality restaurants, cafes, and shops. Just a few minutes' walk to the Náměstí republiky and Florenc metro stations, the Hilton Hotel, and the largest Czech shopping mall—Palladium. A swimming pool and a fitness center is a two-minute walk away, and the Štvanice tennis courts are close-by.

The interior features a 64 sq. m. living room with a fully fitted open plan kitchen and dining area, two bedrooms with built-in wardrobes, two bathrooms with a bathtub and a toilet (one is en-suite), a walk-in closet, a storage room, and an entry hall.

Elevator to the apartment, hardwood oak floors, tiles, security entry door, plenty of built-in storage, blinds, washing machine, dishwasher, microwave, video entry phone, 7.6 sq. m. cellar. Available garage parking for CZK 4,800 per month.



\* Area of the unit according to the Civil Code. The area consists of the sum total area of the entire unit bounded by perimeter walls.