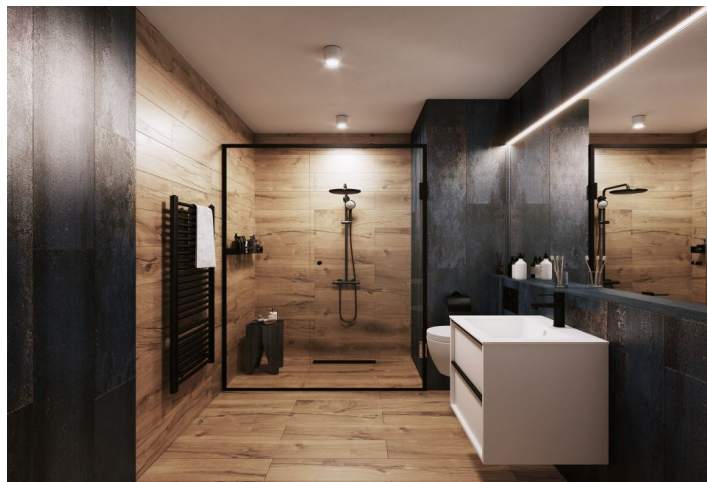


## Apartment One-bedroom (2+kk)

€ 233 579 | CZK 5 841 806

55.33 m<sup>2</sup>, Jindřichův Hradec, Třeboň, Svobody



## Apartment One-bedroom (2+kk)

€ 233 579 | CZK 5 841 806

55.33 m<sup>2</sup>, Jindřichův Hradec, Třeboň, Svobody

Total area	55 m <sup>2</sup>
Parking	Parking space at extra cost
Garage	Yes
Cellar	Yes
PENB	B
Reference number	106608

A semi-residential unit is part of the Nová Cihelna project, which is currently being built on the site of a former brickyard that was founded in the 17th century, located in the picturesque spa town of Třeboň. Part of a UNESCO biosphere reserve, it lies in the middle of a romantic landscape, ideal for cyclists, fishermen, and lovers of wellness and relaxation. The apartment is suitable for permanent or recreational living as well as for investment purposes. Estimated completion **3Q/2027**.

The area of the 2nd floor unit will consist of a living space with a preparation for a kitchen, a bathroom, a storage room, and a foyer.

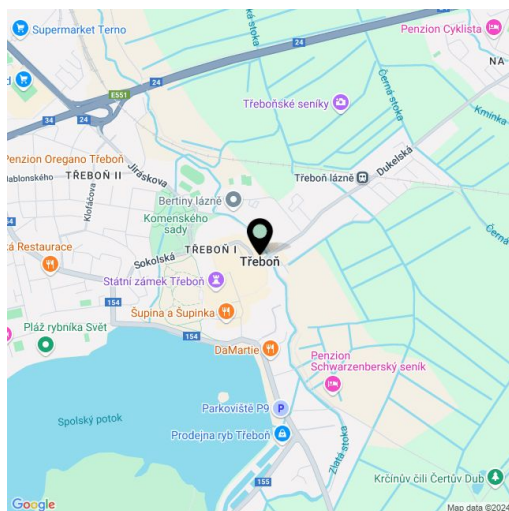
The facilities include **underfloor heating**, large-format plastic windows with triple-glazed panes, quality vinyl floors, a security entrance door, large-format tiles in the bathroom, and Grohe sanitary ware in the modern dark shade of Hard Graphite. It is necessary to purchase a **parking space and a cellar storage unit**.

The Nová Cihelna residential project is located in a **quiet part of Třeboň**; it will be within walking distance of the Aurora Spa or the beaches of Svět pond. You can easily get to the **uniquely preserved historic core of the town** on foot or by bike. With a **rich spa tradition and lively food scene**, it's located in one of the most sought-after recreational places in the Czech Republic, excellently accessible by car, for example, via the D3 highway, but also by public transport (the train station is on the main railway corridor).

Floor area 55.33 m<sup>2</sup>.

Subject to special legal condition.

For more information, please visit the project website [www.nova-cihelna.cz](http://www.nova-cihelna.cz).



\* Area of the unit according to the Civil Code. The area consists of the sum total area of the entire unit bounded by perimeter walls.

## Apartment One-bedroom (2+kk)

€ 233 579 | CZK 5 841 806

55.33 m<sup>2</sup>, Jindřichův Hradec, Třeboň, Svobody

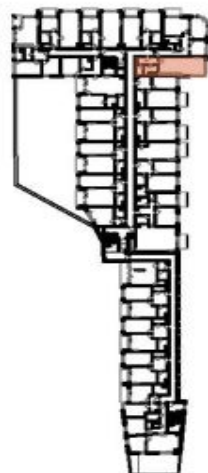
# NOVÁ CIHELNA TŘEBOŇ



5m



JEDNOTKA	3.57 A
DISPOZICE	1+KK
PODLAŽÍ	3 NP
Č. Místnost	m <sup>2</sup>
1 Předsíň	7.20
2 Komora	3.52
3 Koupelna + WC	5.20
4 Obýtná místnost s kuchyní	37.08
Užitná plocha**	53.00
Podlahová plocha*	55.33
Celková plocha	55.33



\*Projekt: Nová Cihelna Třeboň si vyhrazuje právo na změny. Veškeré materiály a informace jsou pouze orientační. Součástí kupní ceny bytů není nábytek. Podlahová plocha bytu je včetně ploch přílože a vnitřních nosných stěn dle výše uvedeného návrhu 3569/2013 Sb.  
\*\*Užitná plocha je včetně vestibulů předávaných bytů