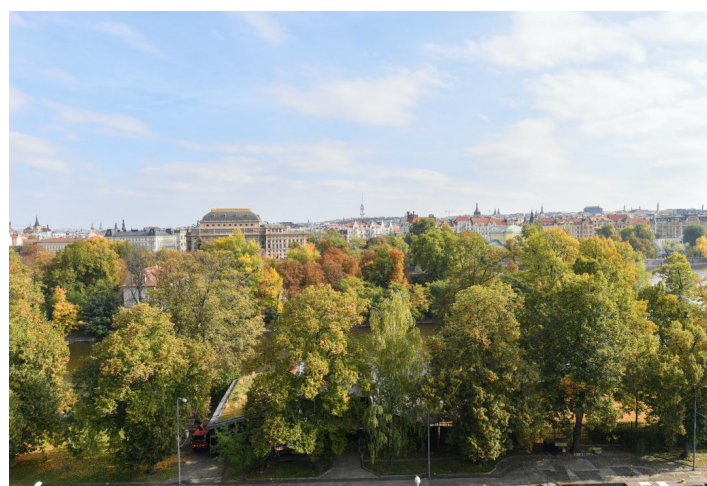
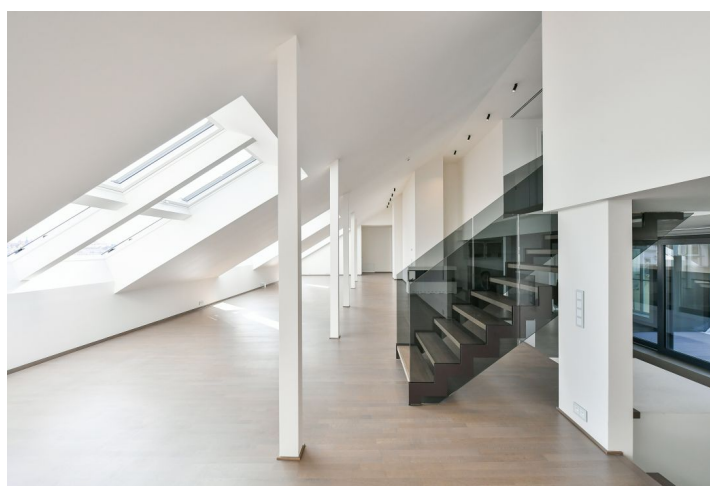


## Apartment Six-bedroom (7+kk)

Ask for price

560 m<sup>2</sup>, Prague 5, Malá Strana, Janáčkovo nábřeží

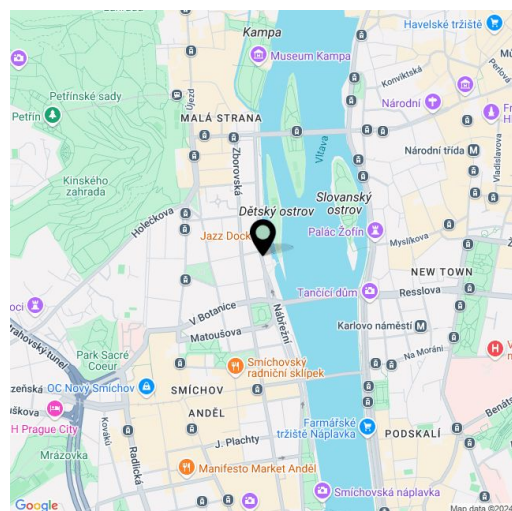


## Apartment Six-bedroom (7+kk)

Ask for price

560 m<sup>2</sup>, Prague 5, Malá Strana, Janáčkovo nábřeží

Total area	605 m <sup>2</sup>
Floor area*	560 m <sup>2</sup>
Terrace	45 m <sup>2</sup>
Parking	Two garage parking spaces.
Garage	Yes
Cellar	-
Service price	Monthly deposit for services and utilities is billed separately.
PENB	A
Reference number	106529
Available from	Immediately



High-end riverfront apartment with beautiful views of the Prague Castle, the Vltava River, the Charles Bridge, the National Theater, and the Dancing Building. This brand new 4-bathroom split-level attic apartment with two terraces facing the quiet courtyard is on the 6th floor of a late 19th century apartment building that was meticulously renovated, benefiting from a 24/7 reception, security, a camera system, a swimming pool, a sauna, a gym, underground parking, an elevator, and a landscaped courtyard garden. Centrally located on a tree-lined street right on the Vltava riverbank, within walking distance of Kampa Island, Petřín Hill Park, Malá Strana (Lesser Town), and Old Town. The neighborhood has easy access to the Prague Castle, the Anděl commercial center and metro station, and the French School.

The lower level offers a huge open space including a living room, a dining area, and a fully fitted kitchen, a bedroom with an en-suite bathroom and terrace, a second bedroom with an en-suite bathroom, and a third bedroom. There is a spacious open room suitable for a playroom/study, two utility rooms, a guest toilet, and an entrance hall with a built-in wardrobe and a second terrace. Providing impressive views of Prague Castle, the upper floor features a gallery, two bedrooms with en-suite bathrooms, and another bedroom. All bathrooms have a walk-in shower, a bidet, and a toilet.

Air-conditioning, heat recovery ventilation, hardwood floors, tiles, ceiling cooling, fireplace, built-in wardrobes, French windows, gas boiler, underfloor heating, Miele kitchen appliances, dishwasher, wine fridge, chip entry to the building, charging station for electric cars in the garage. Two on-site garage parking spaces are included.

\* Size of the unit according to the Housing Act.  
The area consists of the sum total of the internal area of every room.

# Apartment Six-bedroom (7+kk)

Ask for price

560 m<sup>2</sup>, Prague 5, Malá Strana, Janáčkovo nábřeží



# Apartment Six-bedroom (7+kk)

Ask for price

560 m<sup>2</sup>, Prague 5, Malá Strana, Janáčkovo nábřeží

