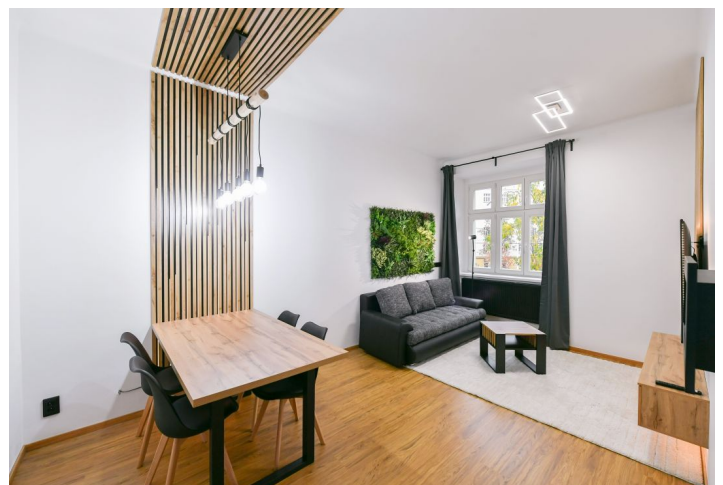


## Apartment One-bedroom (2+kk)

Rented

57 m<sup>2</sup>, Prague 7, Holešovice, Ortenovo náměstí



## Apartment One-bedroom (2+kk)

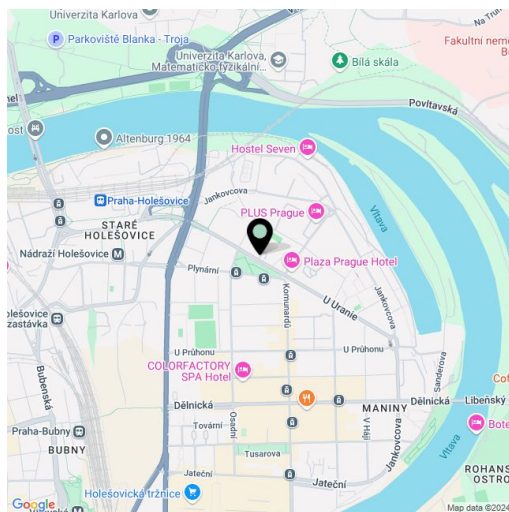
**Rented**57 m<sup>2</sup>, Prague 7, Holešovice, Ortenovo náměstí

<b>Total area</b>	57 m <sup>2</sup>
<b>Parking</b>	-
<b>Cellar</b>	Yes
<b>Service price</b>	Monthly deposit for services and water: CZK 1,800. Electricity and gas are billed separately.
<b>PENB</b>	D
<b>Reference number</b>	106475
<b>Available from</b>	Immediately

This newly refurbished fully furnished apartment on the 1st floor of a well-maintained renovated residential building with an elevator is in a sought-after neighborhood in Holešovice, situated just steps from a tram stop, one stop from the **Nádraží Holešovice** metro station and a few more from the **Vltavská** metro station. A quiet location with very good amenities and quick access to the city center, with the **DOX - Center for Contemporary Art** and **La Fabrika Theatre** nearby, and within easy reach of the **Vltava** embankment, numerous sports facilities, and the **Holešovice** bus and train station.

The apartment includes a living room with a dining area, an entrance hall with a fully fitted kitchen and built-in storage, a bedroom, and a bathroom with a walk-in shower and toilet.

New equipment and furniture, vinyl floors, tiles, new triple-glazed windows, gas boiler, underfloor heating in the bathroom, washing machine, dishwasher, microwave oven, TV, **cellar**.



\* Size of the unit according to the Housing Act.

The area consists of the sum total of the internal area of every room.