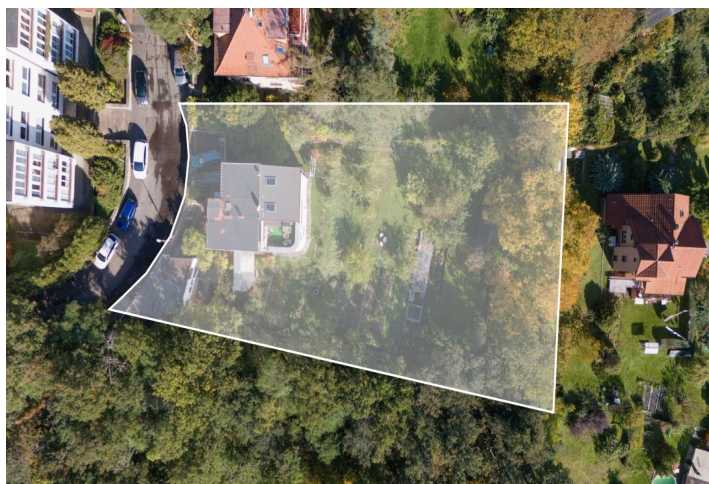


Apartment building Ten-bedroom (11+kk)

€ 1 559 376 | CZK 39 000 000

483 m², Prague 4, Hodkovičky, Nad Údolím

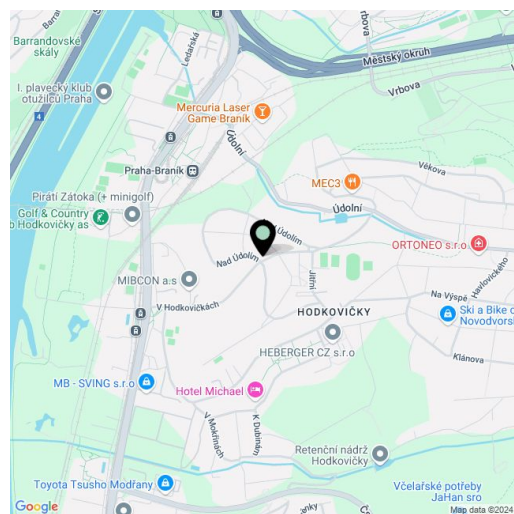


Apartment building Ten-bedroom (11+kk)

€ 1 559 376 | CZK 39 000 000

483 m², Prague 4, Hodkovičky, Nad Údolím

Total gross floor area of the building	573 m ²
Total net leasable area of the building	483 m ²
Plot	1 676 m ²
Foot print	243 m ²
Garden	1 433 m ²
Parking	Garage, double garage and 2 parking spaces
Garage	90 m ²
Terrace	21 m ²
Cellar	-
PENB	G
Reference number	106454



A unique offer of a functionalist villa with a large cascading mature garden and unobstructed beautiful views of the greenery. The villa, built in 1934 for a family that owns a famous fishery on Wenceslas Square, is located in a traditional residential area in Prague 4 at the junction of Hodkovičky and Braník, within easy reach of everything you need.

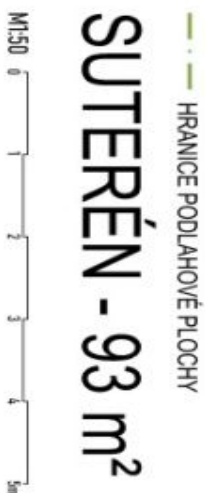
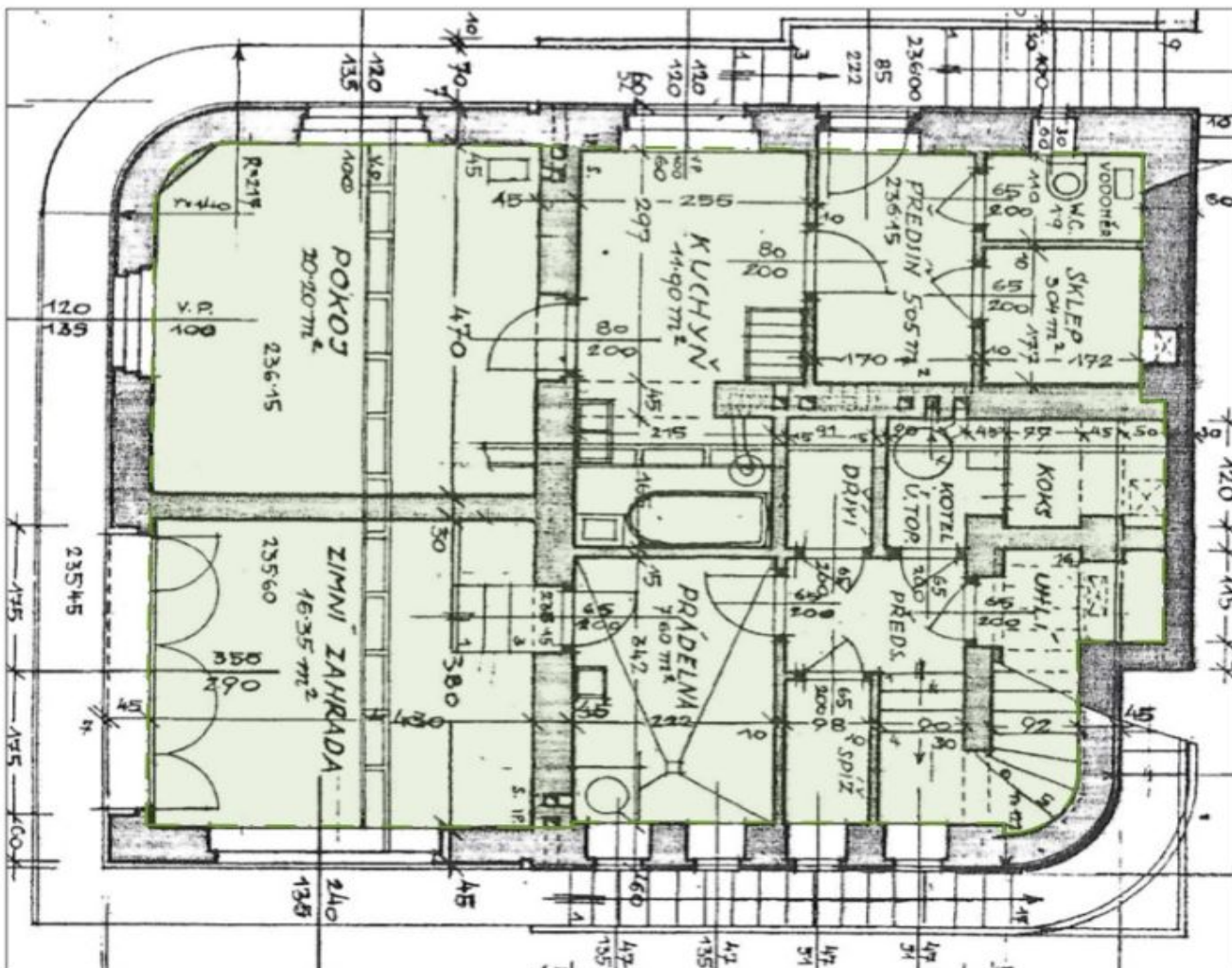
The villa has 4 residential units:

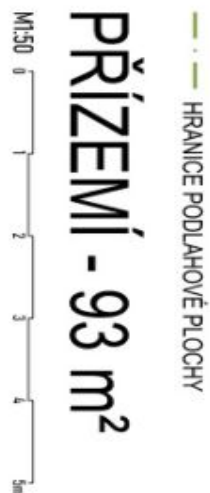
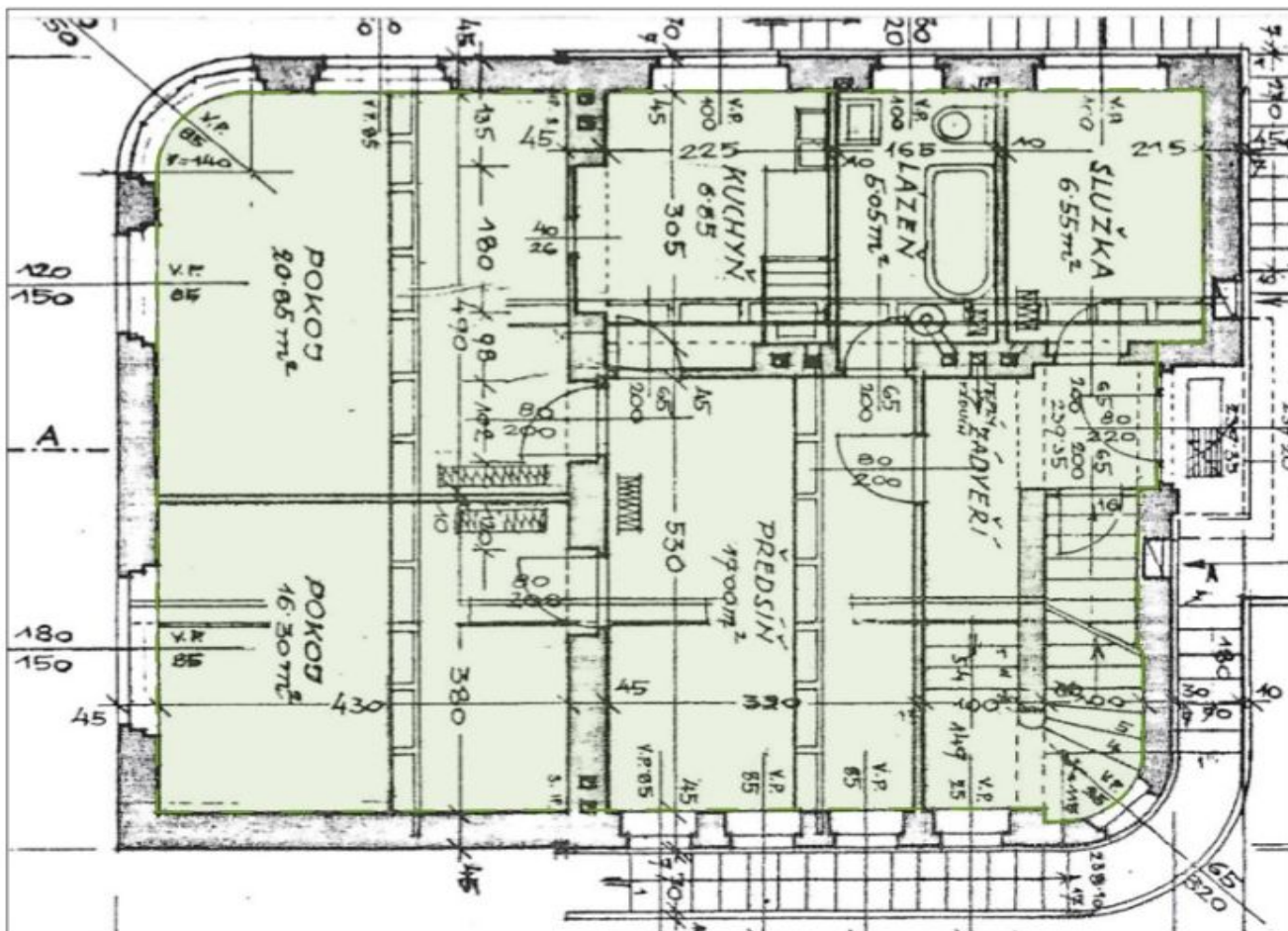
- 1st underground floor, ground floor: one apartment on the floor (2-bedroom with a separate kitchen)
- 1st floor: 1-bedroom with a separate kitchen and a terrace
- 2nd floor: studio apartment with a balcony
- the apartments are **rented for a fixed period** until January and June of 2025

The house is in a condition **for complete reconstruction**, there is a proposal for the location of a **terraced apartment building** that could replace the existing building. The proposal was developed in accordance with the spatial plan. The sloped plot has access in the upper part, where a **separate two-storey building** was built in the 1970s - in its upper level there is a **garage** on the right, a **double garage** in the middle and a **commercial unit** with an entrance from the access road on the left, the whole lower part contains a **workshop**. Furthermore, in the upper left part of the plot is an uncovered **parking space for 2 cars**, under which there is another **workshop**. In the lower part of the plot there is a greenhouse and a summer garden house. The casement windows have been preserved in the villa.

An excellent location guaranteeing complete privacy allows you to be on the **golf course, tennis or badminton courts**, on a walk in the **forest**, on the **cycle path** along the Vltava, in a kindergarten and elementary school or a shopping center in no time. By car, you can quickly drive to the South Junction and the Prague ring road. There is a tram and railway stop nearby, and buses provide transport links to the Kačerov metro station.

Usable area of the house 462 m², usable area - workshops, commercial unit, garages approx. 90,48 m², terrace 20.5 m², built-up area 243 m² (including workshops, garages and commercial unit), garden 1,433 m², plot 1,676 m².

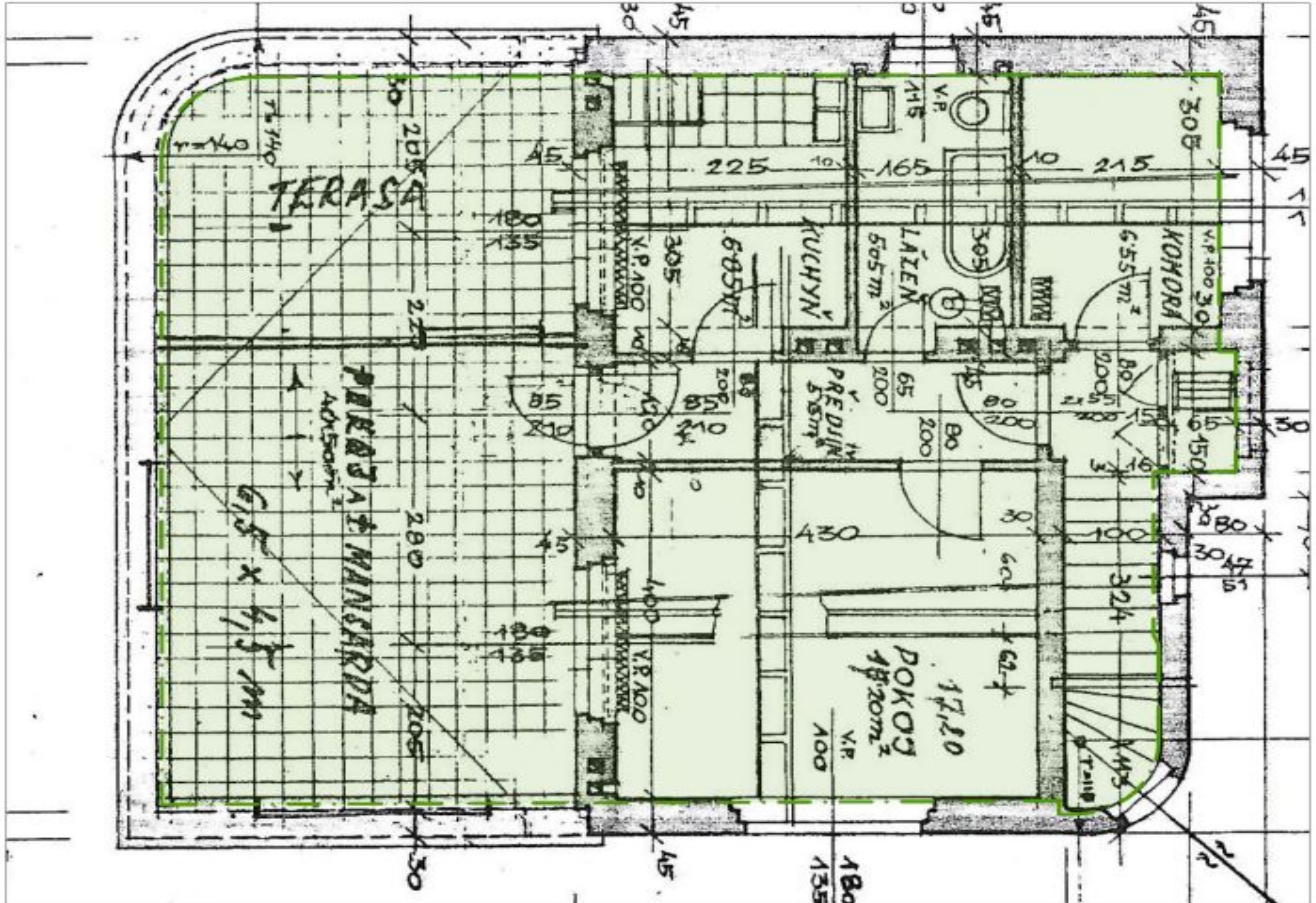






1. PATRO - 94 m²

HRANICE PODLAHOVÉ PLOCHY





HRANICE PODLAHOVÉ PLOCHY
SKLEP - 58 m²
M:1:50 0 1 2 3 4 5m