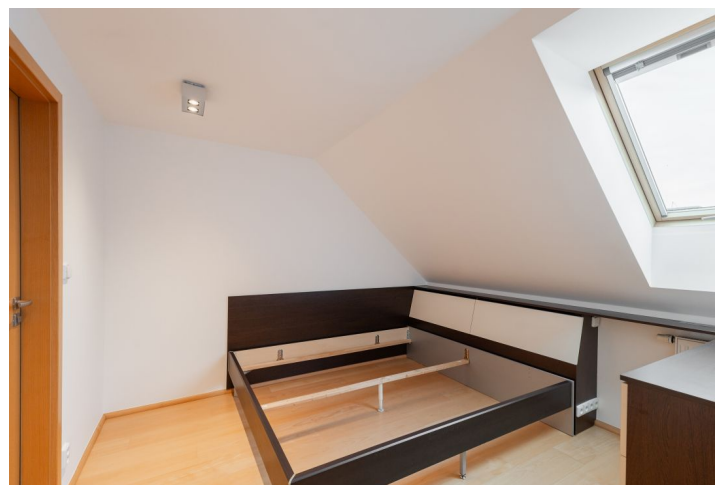


## Apartment One-bedroom (2+kk)

€ 1 000 | CZK 25 000

56 m<sup>2</sup>, Prague 8, Libeň, U libeňského pivovaru



## Apartment One-bedroom (2+kk)

€ 1 000 | CZK 25 000

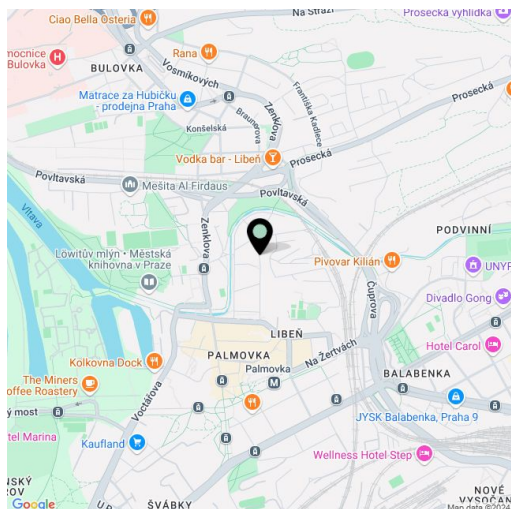
56 m<sup>2</sup>, Prague 8, Libeň, U libeňského pivovaru

Total area	61 m <sup>2</sup>
Floor area*	56 m <sup>2</sup>
Terrace	5 m <sup>2</sup>
Parking	-
Cellar	Yes
Service price	Monthly deposit for services and water: CZK 2,000. Electricity and gas are billed separately.
PENB	G
Reference number	106417
Available from	Immediately

This renovated, furnished attic apartment with a terrace is on the 5th floor of a well-maintained residential building with an elevator located on a quiet street in Libeň, Prague 8, near the Rokytká Stream, within quick reach of full amenities and the city center, just two short tram stops from the Palmovka metro station. Local amenities include a wide range of shops and services, schools, the Pod Palmovkou Theater, Thomayerovy Sady Park, numerous sports facilities, and a nearby bike trail via which you can reach the city center, or the Stromovka Park and Zoo in the opposite direction.

The interior features a living room with a fully fitted open plan kitchen, a study area, and a **terrace** facing the quiet courtyard, a bedroom with an en-suite bathroom (bathtub, toilet, underfloor heating, utility area), and an entrance hall with a built-in wardrobe and storage space.

Laminate floors, tiles, built-in wardrobes and storage, gas boiler, dishwasher, microwave oven, **cellar**.



\* Size of the unit according to the Housing Act.

The area consists of the sum total of the internal area of every room.