

Apartment building

Ask for price

Karlovy Vary, Karlovy Vary, Slovenská

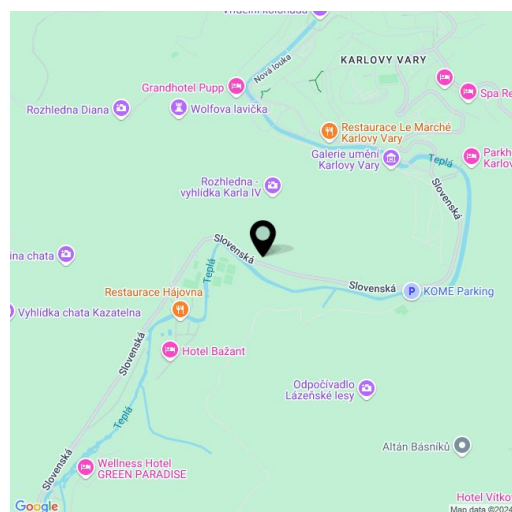


Apartment building

Ask for price

Karlovy Vary, Karlovy Vary, Slovenská

Total gross floor area of the building	4 655 m ²
Plot	9 497 m ²
Foot print	2 038 m ²
Parking	28 outdoor parking spaces and an underground garage
Cellar	-
PENB	D
Reference number	106393



An offer of a large historical building of the original spa cafe and restaurant, rebuilt and completely equipped for the needs of the school. The complex with modern classrooms, accommodation for teachers and pupils, offices and warehouses is located in the outskirts of Karlovy Vary near the airport, by the Teplá River and deep forests interwoven with paths for pedestrians and cyclists.

Key investment criteria

- historical value: the main building was built in **1819–1823**
- excellent condition, **completely renovated**
 - gross floor area of the buildings **4,655 m²**
 - gross floor area of A building 1,115 m²
 - gross floor area of B building 1,290 m²
 - gross floor area of C building 1,803 m²
 - gross floor area of the dining room 419 m²
 - gross floor area of the gatehouse 27 m²
- complete high standard equipment
- parking: **underground garage**, and **28 outdoor designated spaces** in the western and eastern parts of the land
- approx. 10 minutes from **Karlovy Vary International Airport**
- according to the spatial plan, catering and accommodation services, facilities and areas for education, social services, family care, health services, culture, public administration, science and research, church purposes and protection of the population are permitted
- **SPV sale** (share deal)

Description of the property

- main building approved after reconstruction in 2014
- wooden windows, interior doors made of solid wood from the Vltavin Czech manufacturer
- tiles and lamps from abroad
- accommodation for students
- **21 flats/apartments for teachers**
- **16 offices and classrooms**
- historic common room in building B
- dining room capacity **120-130 people**
- professional kitchen equipped above standard
-

Apartment building

Ask for price

Karlovy Vary, Karlovy Vary, Slovenská

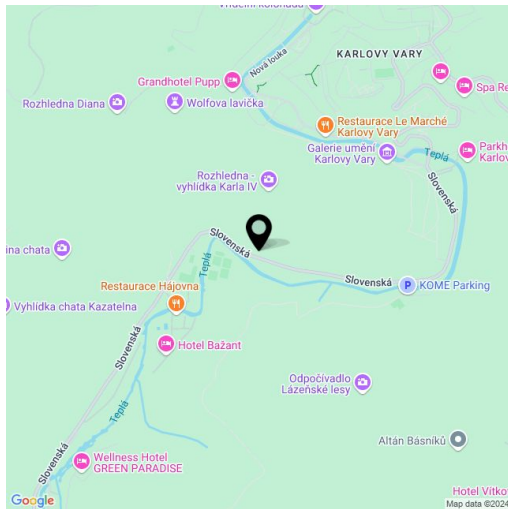
Total gross floor area of the building	4 655 m ²
Plot	9 497 m ²
Foot print	2 038 m ²
Parking	28 outdoor parking spaces and an underground garage
Cellar	-
PENB	D
Reference number	106393

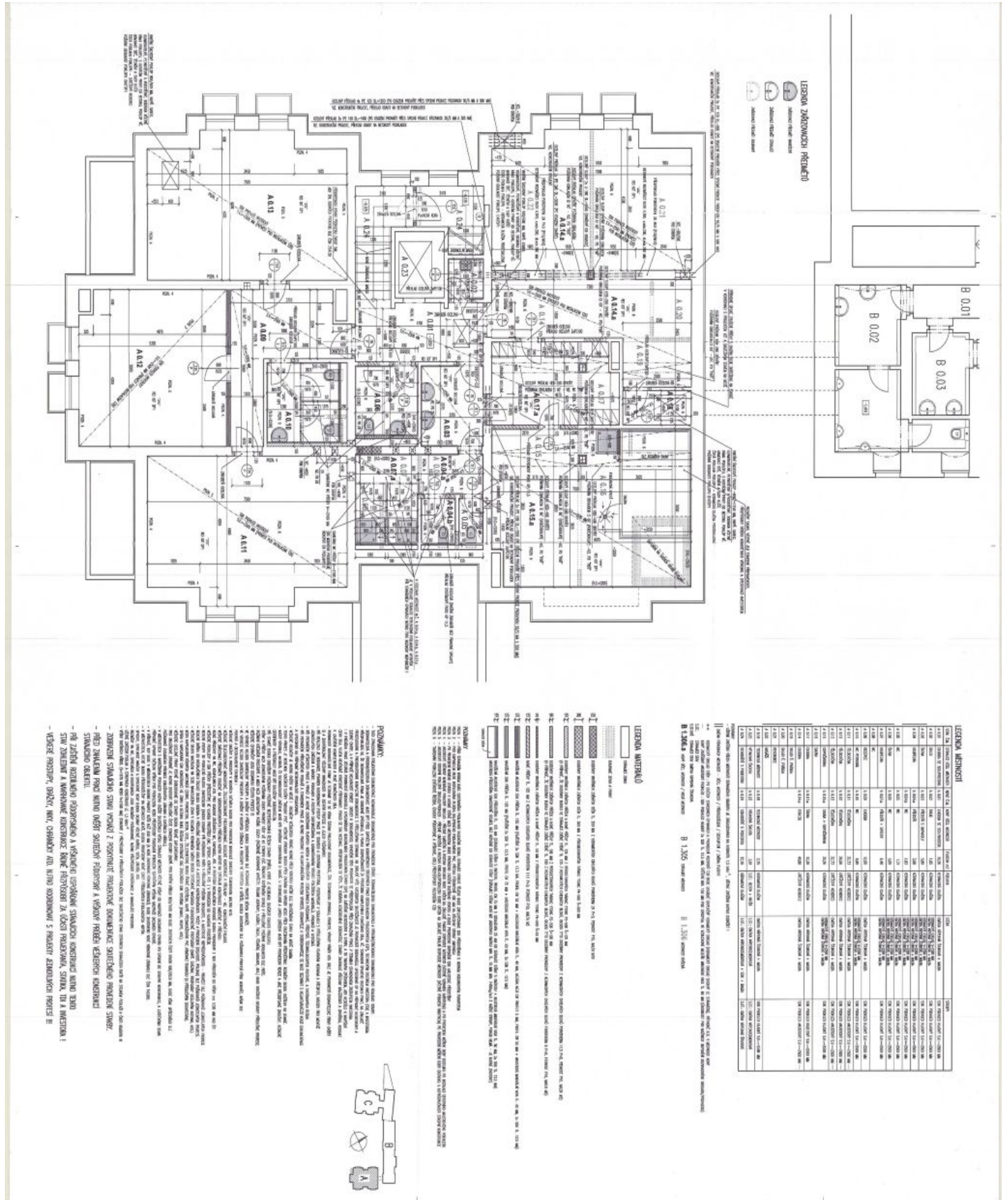
elevators (in buildings A, C)

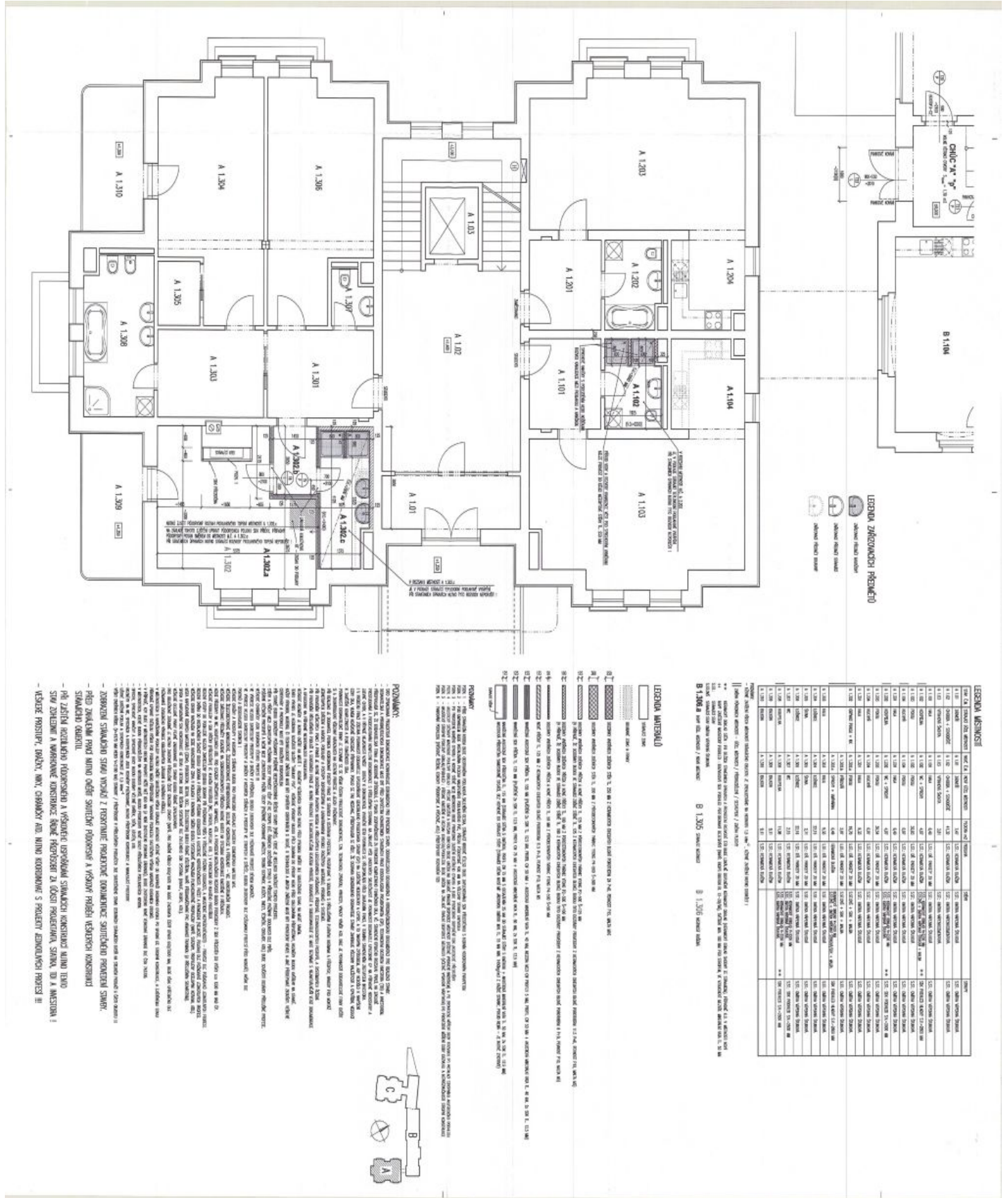
- EPS, **security system** with connection to the PCO desk
- outdoor cooling unit of the EMMETI brand
- heating by a gas boiler with Viessmann boilers
- entrance to the property through two main gates

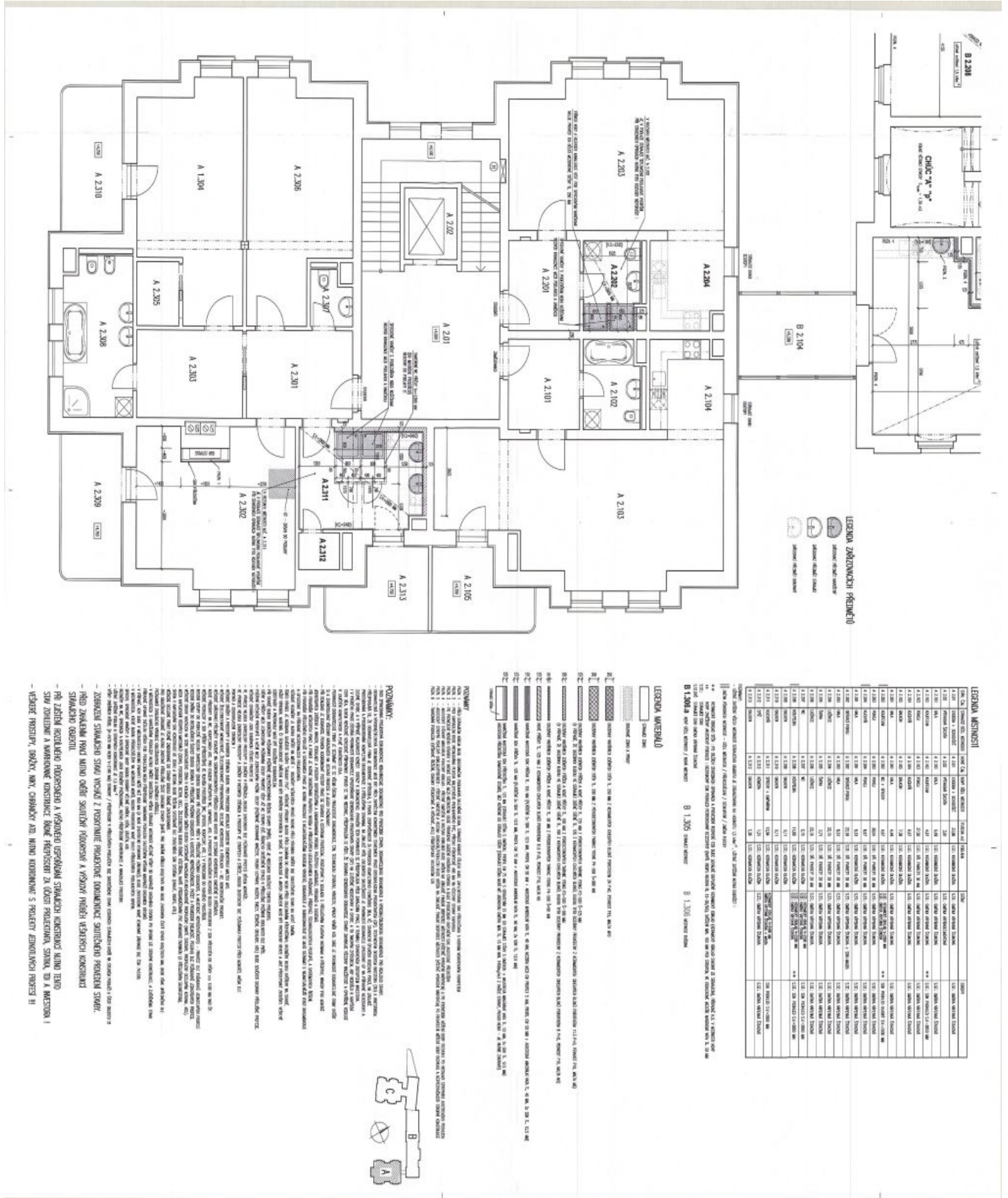
Location

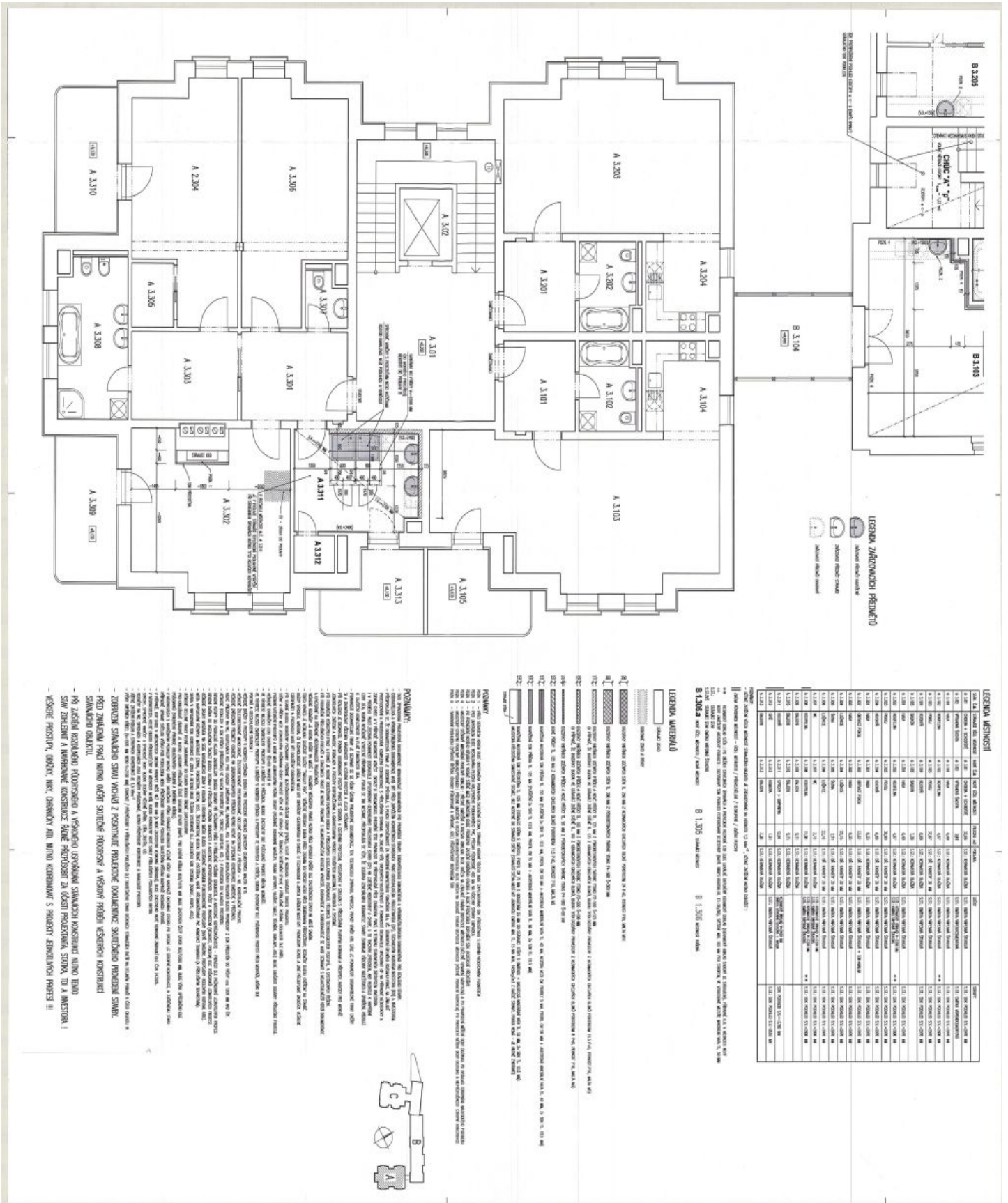
The complex is located approx. 2.5 km from the **center of Karlovy Vary** and 7.5 km from the **airport**, by the road bordering the Teplá River and heading to Březová. Thanks to a **private footbridge**, direct access to the surrounding forests, **cycle paths and hiking trails**, such as the **Beethoven trail**, is possible. There is a **sports field** with tennis courts and a badminton hall in the immediate vicinity.

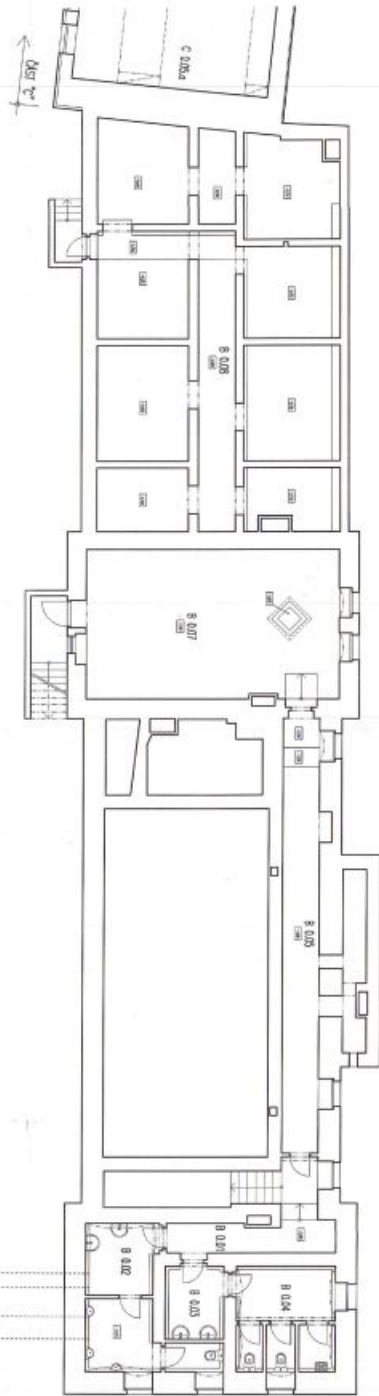












LEGENDA MESTNOSTI

Číslo	Názov	Príklad	Legenda
B.016	CHODBA	B.016	CHODBA
B.017	WC	B.017	WC
B.018	SPALŇOVNÁ	B.018	SPALŇOVNÁ
B.019	KUCHYŇKA	B.019	KUCHYŇKA
B.020	OBEDOVNÁ	B.020	OBEDOVNÁ
B.021	VEŠOBNICA	B.021	VEŠOBNICA
B.022	PRÁČOBNICA	B.022	PRÁČOBNICA
B.023	VEŠOVNICA	B.023	VEŠOVNICA
B.024	KÚPELŇA	B.024	KÚPELŇA
B.025	SPALŇOVNÁ	B.025	SPALŇOVNÁ
B.026	CHODBA	B.026	CHODBA
B.027	WC	B.027	WC
B.028	SPALŇOVNÁ	B.028	SPALŇOVNÁ
B.029	KUCHYŇKA	B.029	KUCHYŇKA
B.030	OBEDOVNÁ	B.030	OBEDOVNÁ
B.031	VEŠOBNICA	B.031	VEŠOBNICA
B.032	PRÁČOBNICA	B.032	PRÁČOBNICA
B.033	VEŠOVNICA	B.033	VEŠOVNICA
B.034	KÚPELŇA	B.034	KÚPELŇA
B.035	SPALŇOVNÁ	B.035	SPALŇOVNÁ
B.036	CHODBA	B.036	CHODBA
B.037	WC	B.037	WC
B.038	SPALŇOVNÁ	B.038	SPALŇOVNÁ
B.039	KUCHYŇKA	B.039	KUCHYŇKA
B.040	OBEDOVNÁ	B.040	OBEDOVNÁ
B.041	VEŠOBNICA	B.041	VEŠOBNICA
B.042	PRÁČOBNICA	B.042	PRÁČOBNICA
B.043	VEŠOVNICA	B.043	VEŠOVNICA
B.044	KÚPELŇA	B.044	KÚPELŇA
B.045	SPALŇOVNÁ	B.045	SPALŇOVNÁ
B.046	CHODBA	B.046	CHODBA
B.047	WC	B.047	WC
B.048	SPALŇOVNÁ	B.048	SPALŇOVNÁ
B.049	KUCHYŇKA	B.049	KUCHYŇKA
B.050	OBEDOVNÁ	B.050	OBEDOVNÁ
B.051	VEŠOBNICA	B.051	VEŠOBNICA
B.052	PRÁČOBNICA	B.052	PRÁČOBNICA
B.053	VEŠOVNICA	B.053	VEŠOVNICA
B.054	KÚPELŇA	B.054	KÚPELŇA
B.055	SPALŇOVNÁ	B.055	SPALŇOVNÁ
B.056	CHODBA	B.056	CHODBA
B.057	WC	B.057	WC
B.058	SPALŇOVNÁ	B.058	SPALŇOVNÁ
B.059	KUCHYŇKA	B.059	KUCHYŇKA
B.060	OBEDOVNÁ	B.060	OBEDOVNÁ
B.061	VEŠOBNICA	B.061	VEŠOBNICA
B.062	PRÁČOBNICA	B.062	PRÁČOBNICA
B.063	VEŠOVNICA	B.063	VEŠOVNICA
B.064	KÚPELŇA	B.064	KÚPELŇA
B.065	SPALŇOVNÁ	B.065	SPALŇOVNÁ
B.066	CHODBA	B.066	CHODBA
B.067	WC	B.067	WC
B.068	SPALŇOVNÁ	B.068	SPALŇOVNÁ
B.069	KUCHYŇKA	B.069	KUCHYŇKA
B.070	OBEDOVNÁ	B.070	OBEDOVNÁ
B.071	VEŠOBNICA	B.071	VEŠOBNICA
B.072	PRÁČOBNICA	B.072	PRÁČOBNICA
B.073	VEŠOVNICA	B.073	VEŠOVNICA
B.074	KÚPELŇA	B.074	KÚPELŇA
B.075	SPALŇOVNÁ	B.075	SPALŇOVNÁ
B.076	CHODBA	B.076	CHODBA
B.077	WC	B.077	WC
B.078	SPALŇOVNÁ	B.078	SPALŇOVNÁ
B.079	KUCHYŇKA	B.079	KUCHYŇKA
B.080	OBEDOVNÁ	B.080	OBEDOVNÁ
B.081	VEŠOBNICA	B.081	VEŠOBNICA
B.082	PRÁČOBNICA	B.082	PRÁČOBNICA
B.083	VEŠOVNICA	B.083	VEŠOVNICA
B.084	KÚPELŇA	B.084	KÚPELŇA
B.085	SPALŇOVNÁ	B.085	SPALŇOVNÁ
B.086	CHODBA	B.086	CHODBA
B.087	WC	B.087	WC
B.088	SPALŇOVNÁ	B.088	SPALŇOVNÁ
B.089	KUCHYŇKA	B.089	KUCHYŇKA
B.090	OBEDOVNÁ	B.090	OBEDOVNÁ
B.091	VEŠOBNICA	B.091	VEŠOBNICA
B.092	PRÁČOBNICA	B.092	PRÁČOBNICA
B.093	VEŠOVNICA	B.093	VEŠOVNICA
B.094	KÚPELŇA	B.094	KÚPELŇA
B.095	SPALŇOVNÁ	B.095	SPALŇOVNÁ
B.096	CHODBA	B.096	CHODBA
B.097	WC	B.097	WC
B.098	SPALŇOVNÁ	B.098	SPALŇOVNÁ
B.099	KUCHYŇKA	B.099	KUCHYŇKA
B.100	OBEDOVNÁ	B.100	OBEDOVNÁ

LEGENDA MATERIÁLOV

- CHODBA
- KUCHYŇKA
- OBEDOVNÁ
- VEŠOVNICA
- KÚPELŇA
- SPALŇOVNÁ
- WC

LEGENDA ZÁVEŠOVNÍCH PŘEKLADŮ

- ČERNÝ LAKOVANÝ ŽELEZNÝ PROFIL
- ČERNÝ PROFIL
- ČERNÝ PROFIL

POZNÁMKY: - KUCHYŇKA A OBEDOVNÁ VYKONÁVANÉ JEDNOU KUCHYŇKOU S VEŠOVNICOU A VEŠOVNICOU S VEŠOVNICOU... (Note: This is a partial transcription of the notes section.)