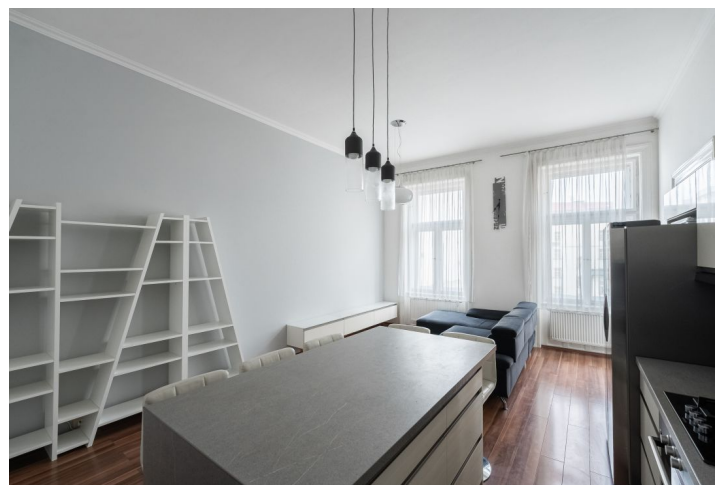
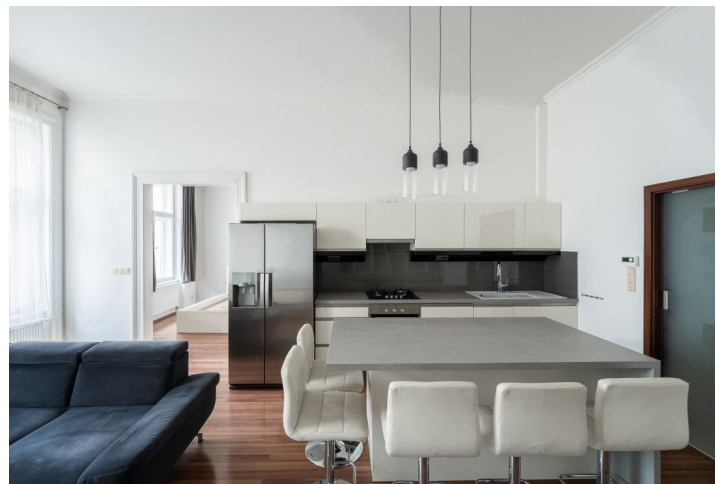
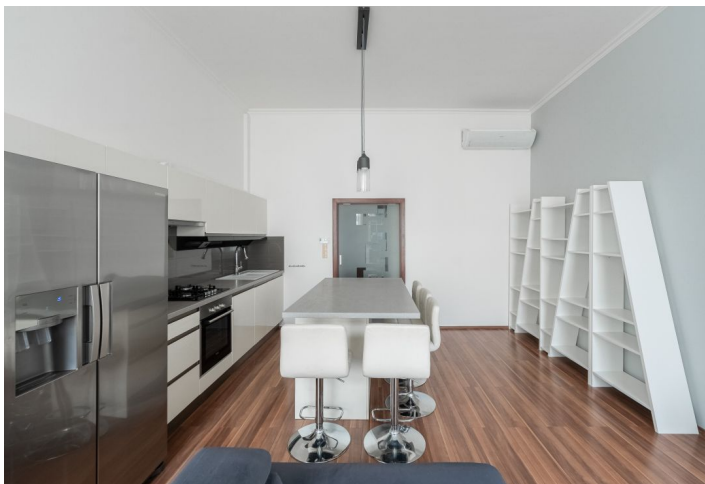


Apartment Two-bedroom (3+kk)

Rented

71 m², Prague 1, Nové Město, Soukenická



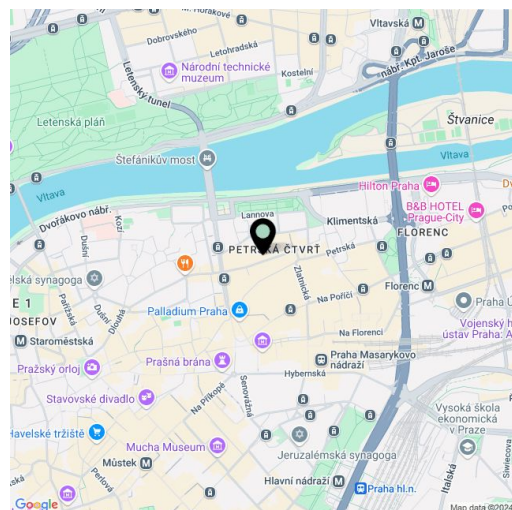
Apartment Two-bedroom (3+kk)

Rented

71 m², Prague 1, Nové Město, Soukenická

Total area	71 m ²
Parking	-
Cellar	-
Service price	Monthly deposit for services and water: CZK 3,000. Electricity and gas are billed separately.
PENB	G
Reference number	106335
Available from	Immediately

City center apartment. This renovated furnished residential unit is situated on the 3rd floor of a well-maintained historic apartment building standing on a side street near Republic Square. The building is part of the Petřská čtvrť historic district in New Town. In the immediate vicinity, there are complete amenities and services available including restaurants, bistros, and cafes. Located within moments of the Palladium Shopping Center and Kotva department store, where you can rent a long-term parking space. Just a few steps from the building is the Náměstí Republiky tram stop and metro station, and the Florenc transfer station is within walking distance. Nearby is also the Vltava embankment and it takes a few minutes to get to Letná Park across the bridge.



The apartment includes an **air-conditioned** living room with a fully fitted open plan kitchen and dining area, 2 bedrooms with en-suite bathrooms, and an entrance hall. One bathroom has a walk-in shower, the other has a large bathtub and a walk-in shower, and both have a toilet. The living room and one bedroom face south towards the street and the second bedroom faces north towards the courtyard.

Preserved original features, **smart home system**, laminate floors, tiles, security entry door, built-in wardrobes, renovated casement windows, automatic blinds, gas boiler, custom-made kitchen. No elevator.

* Size of the unit according to the Housing Act.

The area consists of the sum total of the internal area of every room.

Apartment Two-bedroom (3+kk)

Rented

71 m², Prague 1, Nové Město, Soukenická