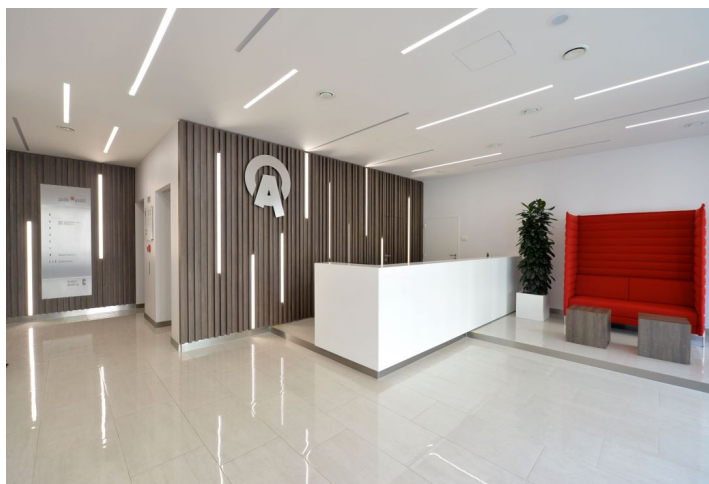
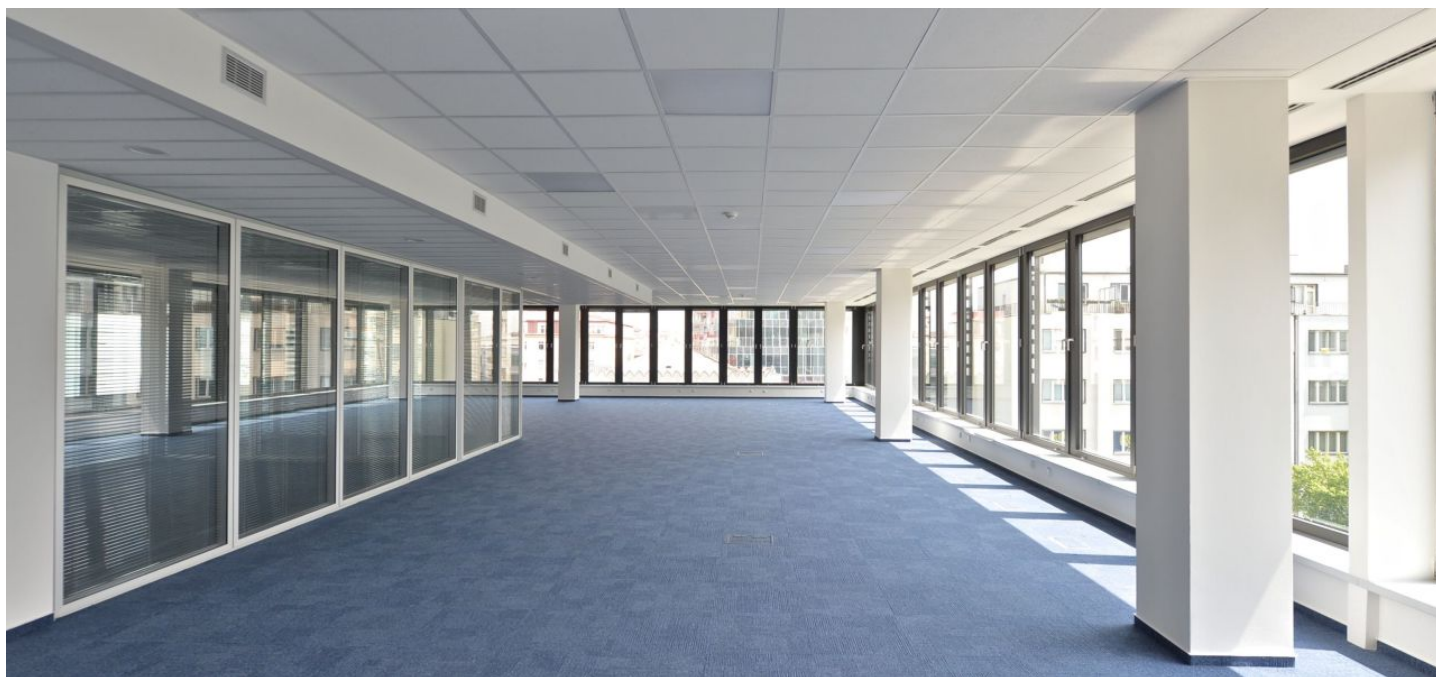


Office space

€ 17.00 - 18.00 / m² | CZK 425 - 450 / m²

Prague 5, Smíchov, Radlická



Office space

€ 17.00 - 18.00 / m² | CZK 425 - 450 / m²

Prague 5, Smíchov, Radlická

Service price	170 CZK monthly per m ²
Available area	375 m ²
Cellar	-
Parking	EUR 140 / pp / month
PENB	G
Reference number	106334

Office space for lease on the 4th floor in a multifunctional building situated in location of Prague 5 - Anděl.

Location:

The building is located in an attractive range of hotels, entertainment and shopping centers. Conveniently accessible due to the central location with superb connections to public transport. Tram stops and Anděl metro station (line B) are located just in front of the building. Easy access by car to the Strakonický tunnel and Prague ring road.

Features and Services:

Open-plan layout or separate offices

Raised floors

Carpets

Interior sunblinds

Storage

Reception desk

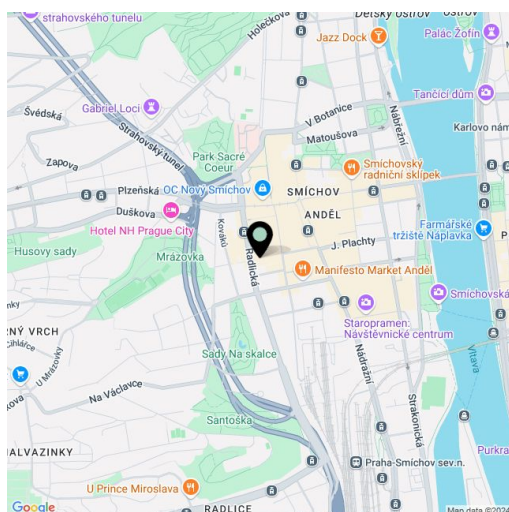
24-hour security

Modern elevators

Underground parking garage

Images might not accurately reflect the current state of the premises.

Rental and service charges listed without VAT. Lessee pays no commission.



Office space

€ 17.00 - 18.00 / m² | CZK 425 - 450 / m²

Prague 5, Smíchov, Radlická

