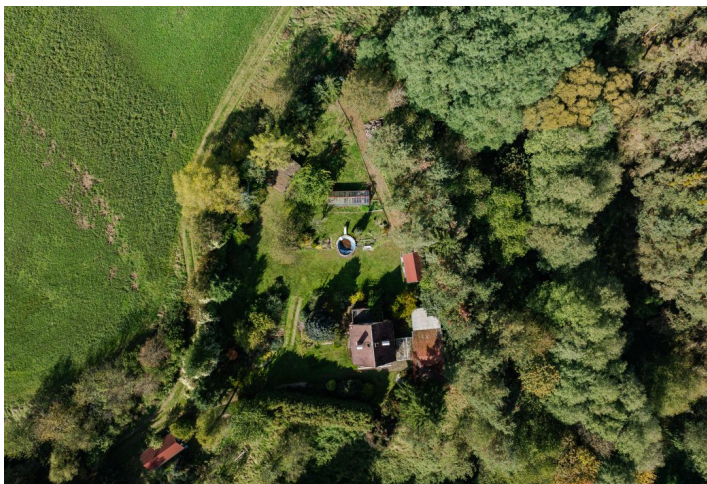


Land

€ 474 198 | CZK 11 900 000

9 175 m², Příbram, Kamýk nad Vltavou

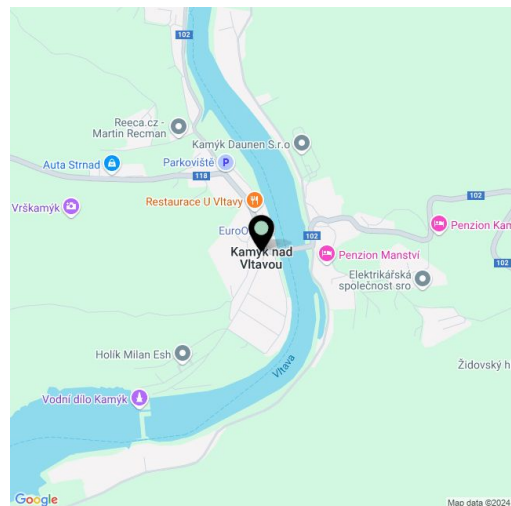


Land

€ 474 198 | CZK 11 900 000

9 175 m², Příbram, Kamýk nad Vltavou

| | |
|------------------|----------------------|
| Price per sq. m. | 1 297 CZK |
| Total area | 9 175 m ² |
| Land type | Housing |
| Reference number | 106308 |



This vast plot of land, surrounded by forests and meadows, is situated in a secluded place above the village of Kamýk nad Vltavou. The plot on which the cottage with its own sauna and garden gazebo is located is intended for recreational purposes and upon approval by the authorities, other recreational facilities can be added to it.

A cottage protected by a remote-controlled alarm, a garden gazebo, and a greenhouse stand on a slightly sloping plot of land, in the lower part of which flows a stream. The land has a septic tank, a water well, and the municipal water supply is at its border. It is surrounded only by forests and meadows, around which an asphalt road leads to Kamýk nad Vltavou.

According to the zoning plan, the plot is used for recreation and, upon approval by the building authority or hydrologist, it is possible to divide it and construct other recreational facilities, including new access roads, sumps, and drilled wells.

The Benešovská highlands, a tourist-attractive area between the Slapy and Orlík dams on the border of the Sedlčany and Příbram regions, is an ideal place for camping, cycling, or wandering along the hiking trails winding through the wooded landscape. A new recreational port for small vessels is being built in Kamýk nad Vltavou, about 40 minutes away from Prague by car. The nearby Zduchovice equestrian resort has several riding areas and is one of the leading organizers of races in the Czech Republic. Celebrations are held every year at the nearby ruins of Vrškamýk, and the nearby Hříměždice quarry, which is also a beautiful place for swimming, hosts the World High Jump Championship every summer.

Total area 9,175 m².