



## Apartment Three-bedroom (4+1)

Rented

156 m<sup>2</sup>, Prague 6, Bubeneč, Gotthardská





## Apartment Three-bedroom (4+1)

Rented

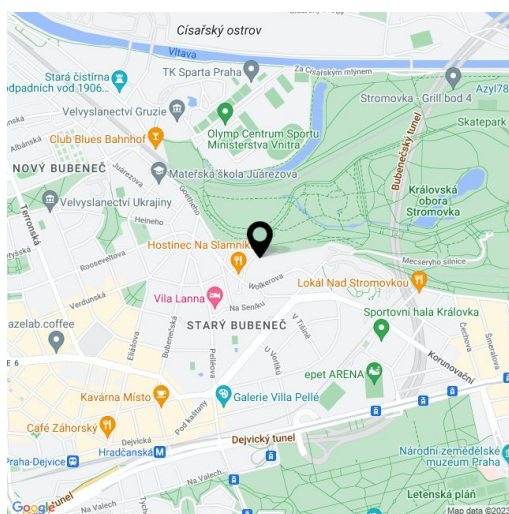
156 m<sup>2</sup>, Prague 6, Bubeneč, Gotthardská

Total area	156 m <sup>2</sup>
Parking	Parking available at CZK 2,500/month.
Cellar	-
PENB	G
Reference number	10626
Available from	Immediately

Greatly benefiting from the perfect location right next to the Stromovka Park, this is a sunny fully renovated air-conditioned 3-bedroom 3-bathroom split-level attic flat. Situated on the fourth top floor of a completely refurbished 19th century building with a new lift. Located in the prestigious embassy district of Bubeneč, a minute walk to a bus stop, a ten minute walk to Hradčanská and Dejvická metro stations with full amenities in the area. Convenient to the international schools in Prague 6, and to the airport.

The lower level of the flat offers a large living room, a fully fitted kitchen, two bedrooms, en-suite shower bathroom, bathroom with tub, and entry hall. The upper floor includes an open attic bedroom with a shower bathroom.

Solid wood parquet floors, tiles, security entry door, gas boiler, toilet with bidet shower in each bathroom, audio entry phone. Parking can be arranged at an additional cost. Deposit servis charges and water : CZK 3.000 /month. Electricity and gas will be tranferred to the tenant.



\* Area of the unit according to the Civil Code. The area consists of the sum total area of the entire unit bounded by perimeter walls.



# Apartment Three-bedroom (4+1)

Rented

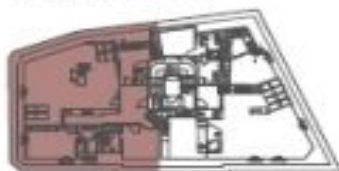
156 m<sup>2</sup>, Prague 6, Bubeneč, Gotthardská



*Villa Gotthard*



## PODKROVÍ



**BYT 7a 4+1**



Byt 7a		6.NP
1.	chodba	18,0 m <sup>2</sup>
2.	pokoj	11,1 m <sup>2</sup>
3.	koupelna	3,8 m <sup>2</sup>
4.	koupelna	6,6 m <sup>2</sup>
5.	pokoj	14,9 m <sup>2</sup>
6.	obýv.pokoj s jídelnou	53,7 m <sup>2</sup>
7.	kuchyň	11,8 m <sup>2</sup>
Celková užitná plocha bytu		143,8 m <sup>2</sup>
<b>Celková podlahová plocha</b>		<b>155,8 m<sup>2</sup></b>



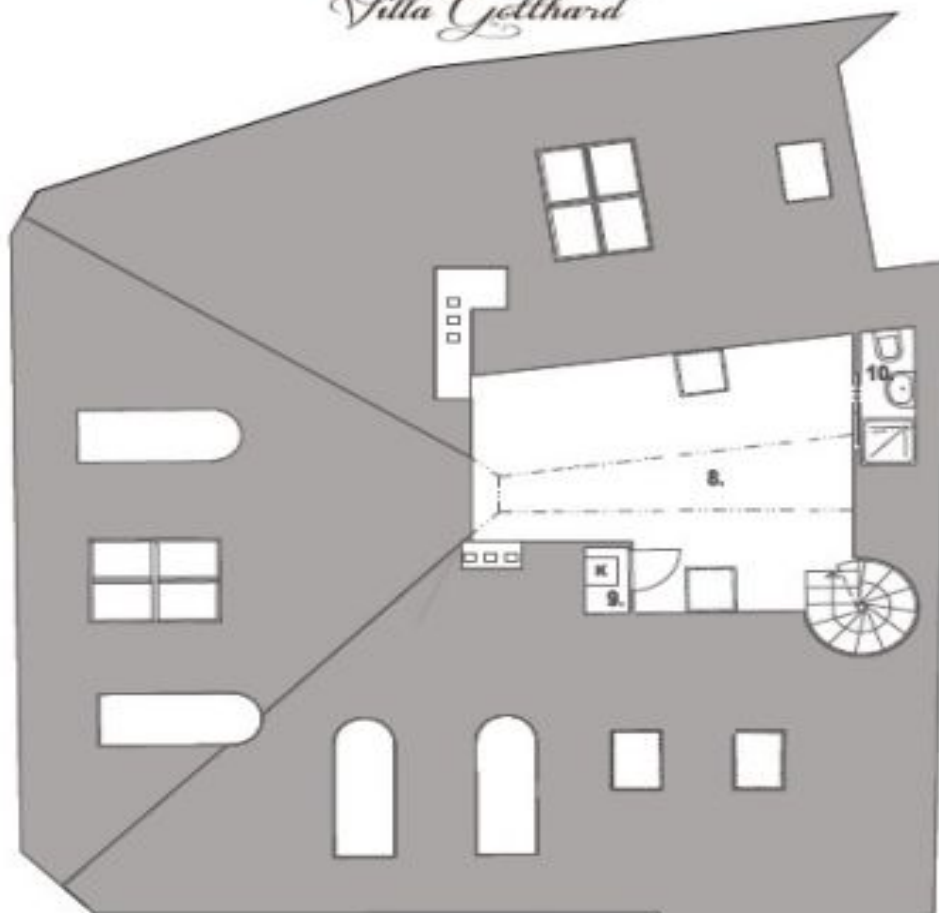
## Apartment Three-bedroom (4+1)

Rented

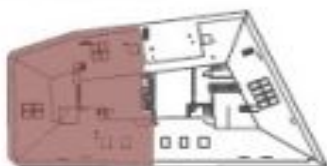
156 m<sup>2</sup>, Prague 6, Bubeneč, Gotthardská



*Villa Gotthard*



### GALERIE



### BYT 7b 4+1

Byt 7b		podkroví
8.	pokoj	21,4 m <sup>2</sup>
9.	kotel	1,0 m <sup>2</sup>
10:	koupelna	1,6 m <sup>2</sup>
Celková užitná plocha bytu		143,8 m <sup>2</sup>
<b>Celková podlahová plocha</b>		<b>155,8 m<sup>2</sup></b>