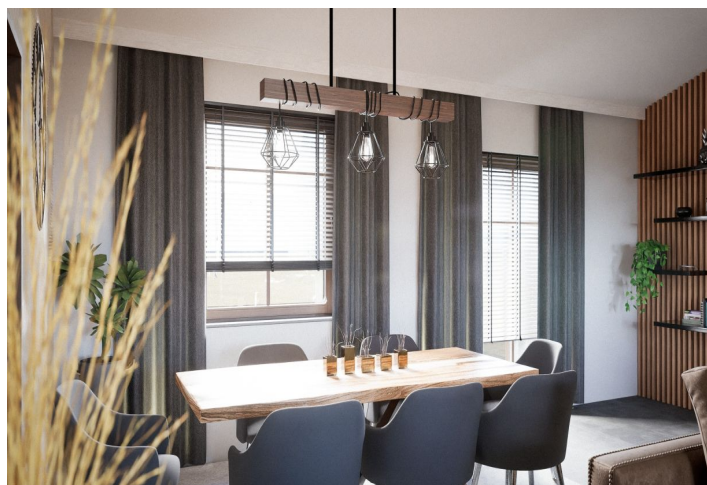
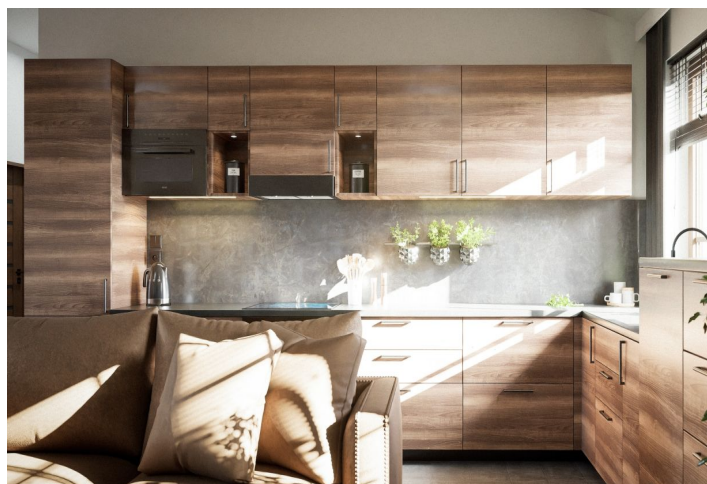


Apartment Two-bedroom (3+kk)

€ 300 020 | CZK 7 490 000

86 m², Chomutov, Kovářská, Kostelní

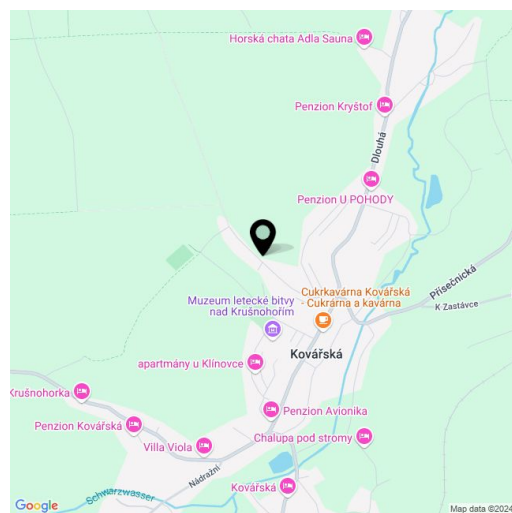


Apartment Two-bedroom (3+kk)

€ 300 020 | CZK 7 490 000

86 m², Chomutov, Kovářská, Kostelní

Total area	92 m ²
Floor area*	86 m ²
Balcony	6 m ²
Parking	Two parking spaces
Cellar	41 m ²
PENB	A
Reference number	106134



* Area of the unit according to the Civil Code. The area consists of the sum total area of the entire unit bounded by perimeter walls.

This apartment with a balcony and a parking space is located on the 2nd floor of the new George residence, which was built near Klínovec in the Krušné Mountains. The residence is completed, so it will be possible to enjoy the apartment already this winter season. There are many well-maintained cross-country trails in the area, and, outside the winter season, hiking and cycling trails are available on both the Czech and German sides of the mountain range.

The residential unit consists of a spacious living room with access to the balcony and a preparation for a kitchen, 2 separate bedrooms, a bathroom (with a toilet, sink, and shower), a walk-in wardrobe, a storage space, and a hall.

Facilities include German Classen waterproof laminate floors, Italian Marazzi tiles, triple-glazed plastic windows, fireproof entrance doors, designer bathroom fittings and faucets, and central heating with an automatic wood pellet boiler. Thanks to the dark gable roof, the base made of natural quartzite stone, and cladding made of Siberian larch, the building blends with the local environment, while modern technologies ensure minimal energy costs. There is preparation for sauna with a relaxation zone, a ski storage room, a children's playground, and a gazebo with seating ideal for a communal barbecue attached to the residence. The apartment comes with an outdoor parking space.


The building stands on the edge of the picturesque town of Kovářská, next to a road with little traffic and at the same time maintained all year round. In the city center is a restaurant, a cafe, a grocery store, a post office, or a museum. A bike path passes right by the residence, and it is possible to connect to nature trails in no time. The Klínovec ski resort is less than a quarter of an hour away by car, and the German village of Fichtelberg is also within easy reach. The Poohří landscape also offers many possibilities for wonderful trips. The drive from the outskirts of Prague takes about an hour and a quarter on the D7 highway, and Kovářská has good bus and train connections with the surrounding towns.

Floor area 86 m², balcony 5.5 m², attic 41.3 m².

Apartment Two-bedroom (3+kk)

€ 300 020 | CZK 7 490 000

86 m², Chomutov, Kovářská, Kostelní



**RESIDENCE
GEORGE**



**APARTMÁN Č. 8
3. NP / 3+KK**

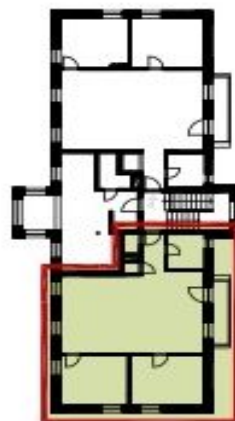
Obyvací pokoj + KK	42,8m ²
Ložnice	14,5m ²
Pokoj	13,5m ²
Koupelna	5,0m ²
Komora	0,8m ²
Šatna	1,3m ²
Zádvěří	3,6m ²
Balkon	5,5m ²
Celkem	87,0m²



Tento plán je pouze ilustrační. Vybavení zařízení interiéru v místech bytů není předmetem dohody. Developer si vyhrazuje právo na změnu.



ZÁPADNÍ POHLED



SCHEMA PODLAŽÍ