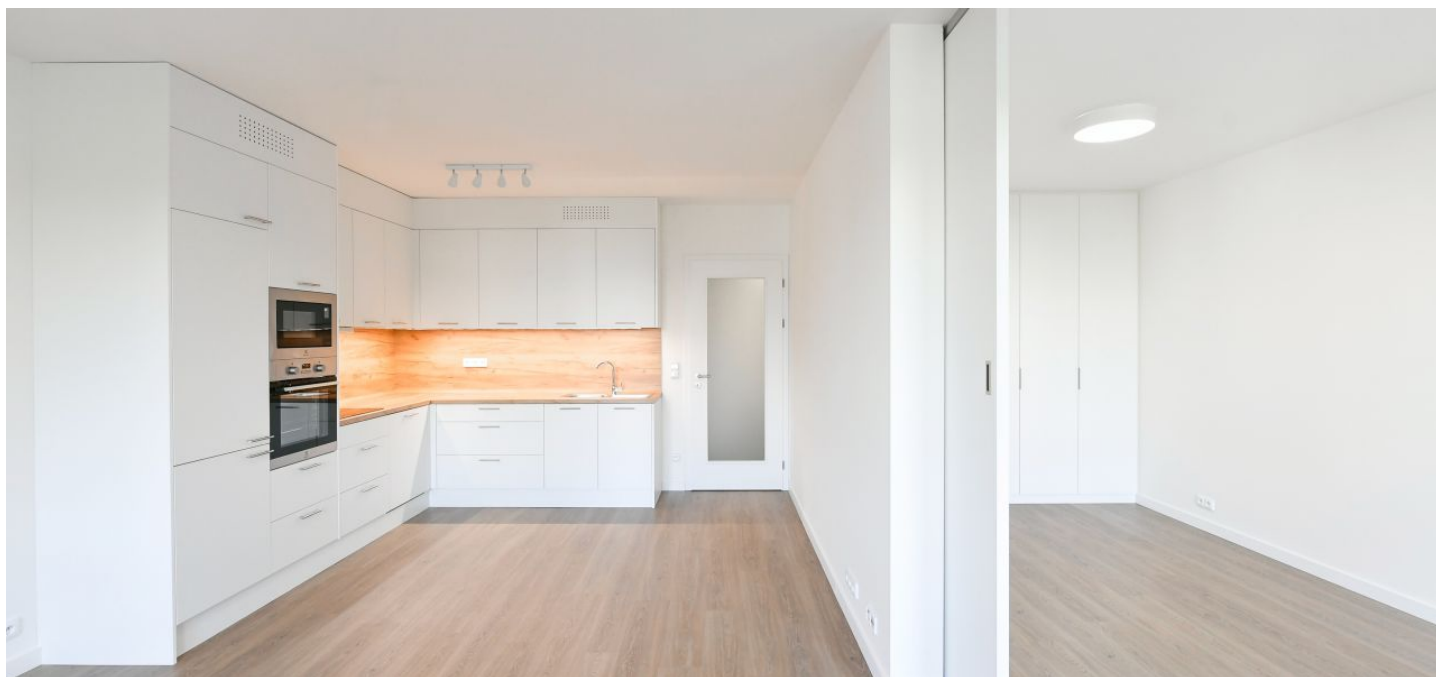


## Apartment One-bedroom (2+kk)

Rented

58.4 m<sup>2</sup>, Prague 5, Stodůlky, Mukařovského



Apartment One-bedroom (2+kk)

Rented

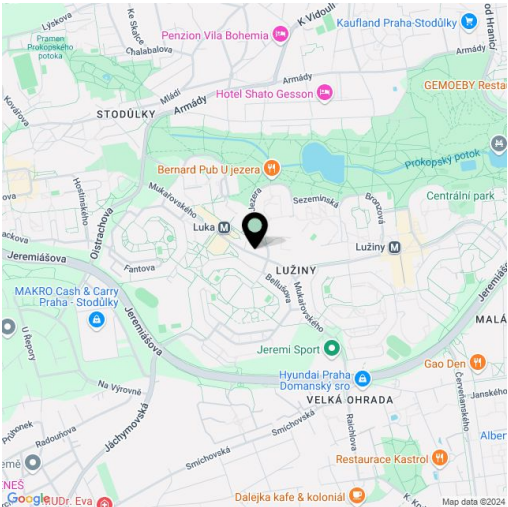
58.4 m², Prague 5, Stodůlky, Mukařovského

Total area	64 m²
Floor area*	58 m²
Balcony	6 m²
Parking	Garage parking.
Garage	Yes
Cellar	Yes
Service price	Monthly deposit for services, water, and heating: CZK 4,800. Electricity is billed separately.
PENB	B
Reference number	106120
Available from	Immediately

Brand-new unfurnished apartment with a balcony on the 3rd floor in the Alfa Residence - a newly built apartment building with underground parking, in the immediate vicinity of the Luka metro station (15 minutes to the city center) and shopping center. Within easy reach of full amenities and services, near a winter stadium and the Prokopské and Dalejské Valleys. Located within a 15-minute drive to the Václav Havel Airport, and it takes five minutes to drive to the D8 highway and Prague Ring Road.

The interior features a living room with a fully fitted open plan kitchen and dining area, a bedroom with a built-in wardrobe, a bathroom (bathtub, toilet), a fitted **walk-in closet**, and an entrance hall with a built-in wardrobe. The **balcony** is accessible from both main rooms.

Laminate floors, tiles, security entry door, automatic exterior blinds in the living room, central heating, dishwasher, induction stove top, microwave oven, **cellar**, lift. A **garage parking** space is included.



\* Area of the unit according to the Civil Code. The area consists of the sum total area of the entire unit bounded by perimeter walls.