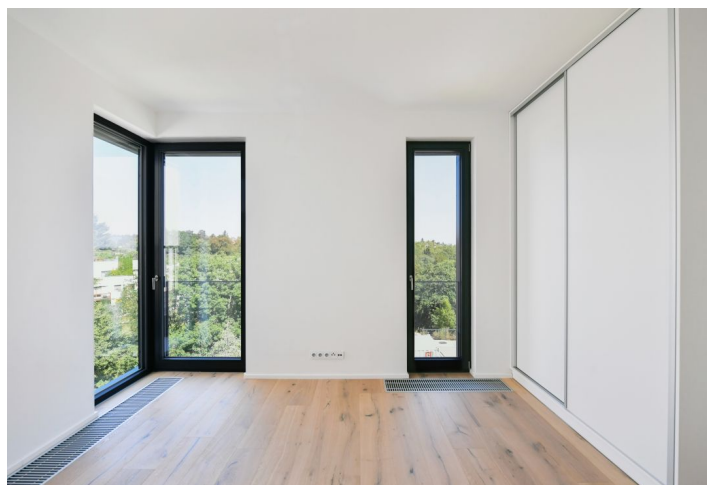
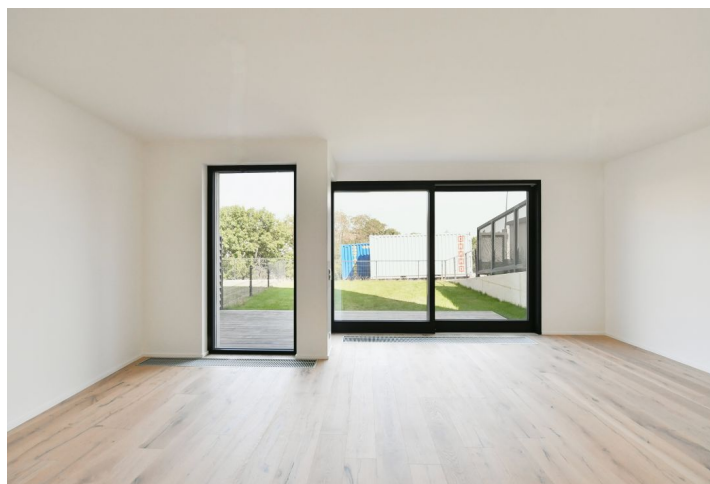


House Three-bedroom (4+kk)

Rented

227 m², Prague 5, Košíře, Krejčova



House Three-bedroom (4+kk)

Rented

227 m², Prague 5, Košíře, Krejčova

Total area	227 m²
Plot	226 m²
Foot print	96 m²
Garden	77 m²
Floor area	194 m²
Terrace	33 m²
Parking	A garage and parking on the plot.
Garage	Yes
Cellar	-
Service price	Utilities are billed separately.
PENB	B
Reference number	105938
Available from	01.10.2025

This brand new high-standard unfurnished 2-bathroom corner townhouse with a terrace and garden is part of the Top Residence Pomezí residential project. Set on a quiet street in Prague Košíře, on a hill offering pretty panoramic views of the city, located near the Cibulka forest park and Vidoule nature preserve, within easy reach of amenities and services, with quick access to the German School and Jinonice metro station, and with quick connections to the Nový Smíchov shopping and entertainment zone, the Anděl metro station, and French School.

The ground floor features a bedroom with an en-suite bathroom (walk-in shower, toilet), an entrance hall with a built-in wardrobe, and garage access. The lower ground floor includes a living room with a fully fitted open plan kitchen and access to the **terrace/garden**, a large storage room, a utility room, and a toilet. The upper floor offers two bedrooms with a shared **terrace**, a bathroom (bathtub), and a separate toilet.

Views of Prague, heat recovery ventilation, **hardwood floors**, tiles, built-in wardrobe in one of the upper bedrooms, automatic exterior blinds, gas boiler, dishwasher, microwave oven, induction hob. A single **garage** is available.

