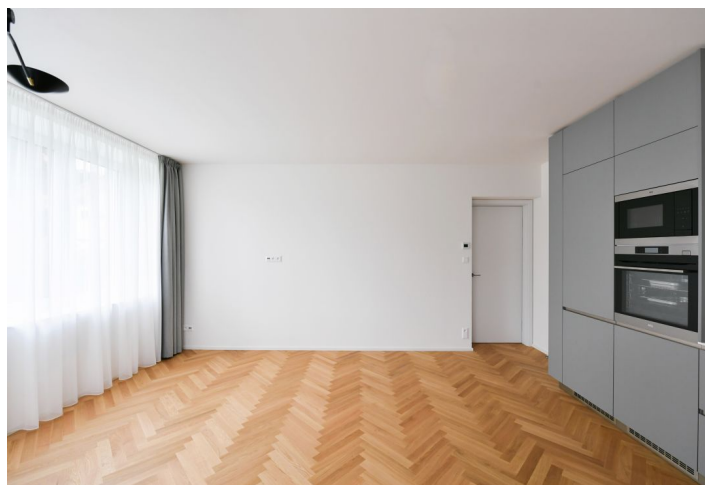


Apartment Two-bedroom (3+kk)

Rented

76 m², Prague 5, Smíchov, Nad Laurovou



Apartment Two-bedroom (3+kk)

Rented

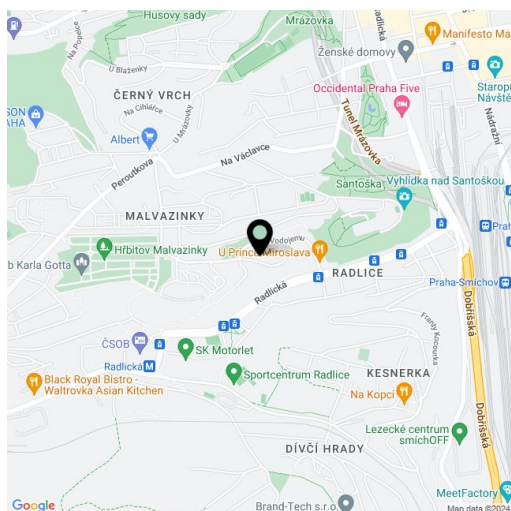
76 m², Prague 5, Smíchov, Nad Laurovou

| | |
|------------------|---|
| Total area | 76 m ² |
| Parking | - |
| Cellar | - |
| Service price | Monthly deposit for services and utilities in the amount of CZK 5,000 is billed separately. |
| PENB | Not required |
| Reference number | 105691 |
| Available from | Immediately |

Brand new apartment in a wonderful green location in Prague 5. This is an unfurnished air-conditioned 2-bedroom apartment on the 2nd floor of a completely refurbished apartment building with a shared garden and a terrace. The rooftop photovoltaic power station significantly reduces cost of electricity consumption. Set on a slope on a quiet street in Malvazinky, Prague 5, in close vicinity of the Na Pláni, Na Farkáně, Paví Vrch, and Santoška parks and located within easy reach of the Radlická metro station (a ten-minute walk or two short tram stops), with bus and tram connections, and quick access to full amenities, the Nový Smíchov/Anděl shopping zone, and sports facilities including a swimming pool, a fitness center, tennis courts, and more.

The interior features a living room with a fully fitted open plan kitchen and dining area, 2 bedrooms, a bathroom including a walk-in shower and toilet, a utility room, a guest toilet, and an entrance hall.

Air-conditioning, hardwood floors, tiles, new aluminum triple-glazed windows, curtains and drapes, built-in wardrobes, electric underfloor heating, washer, dryer, AEG kitchen appliances, dishwasher, steam oven, induction stove top, shared secure bike storage room with additional storage space, automatic irrigation, robotic lawn mower. No elevator.



* Area of the unit according to the Civil Code. The area consists of the sum total area of the entire unit bounded by perimeter walls.