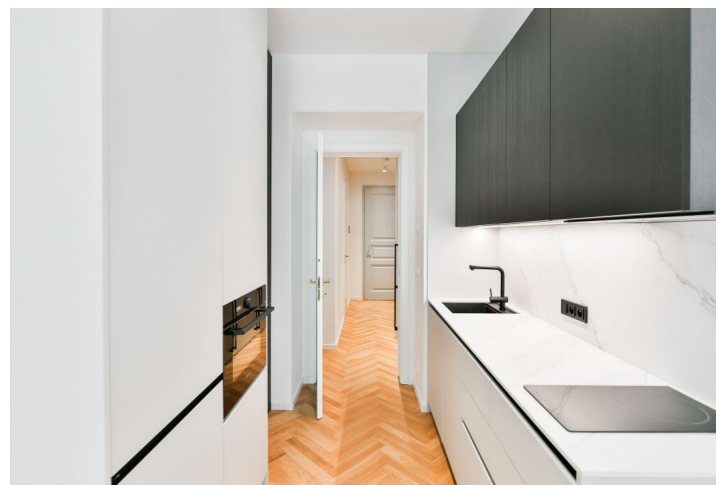


Apartment Studio (1+kk)

Rented

33 m², Prague 2, Vinohrady, Varšavská



Apartment Studio (1+kk)

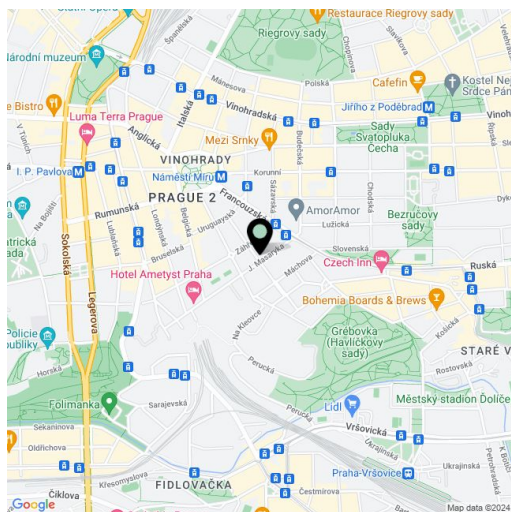
Rented33 m², Prague 2, Vinohrady, Varšavská

Total area	33 m ²
Parking	-
Cellar	-
Service price	Monthly deposit for services, water, and heating: CZK 3,500. Electricity is billed separately.
PENB	Not required
Reference number	105480
Available from	01.10.2025

This brand new partially furnished studio apartment is on the ground floor of a new residence - an apartment building with an elevator. Wonderfully located on a quiet street in a residential neighborhood of tree-lined streets and parks, sidewalk cafes, restaurants, bars, cultural venues and more, with a great atmosphere and Havlíčkovy Sady Park just down the street. Situated only a few min. walk from Náměstí Míru Square with a metro station and multiple tram links, only a short walk to the city center.

The interior features a living room with a fully fitted open plan kitchen and a bedroom area with a built-in bed, a bathroom including a walk-in shower and a toilet, and an entrance hall.

Hardwood floors, tiles, central gas heating, washer, dryer, dishwasher, induction stove top, combination oven, video entry phone.



* Area of the unit according to the Civil Code. The area consists of the sum total area of the entire unit bounded by perimeter walls.