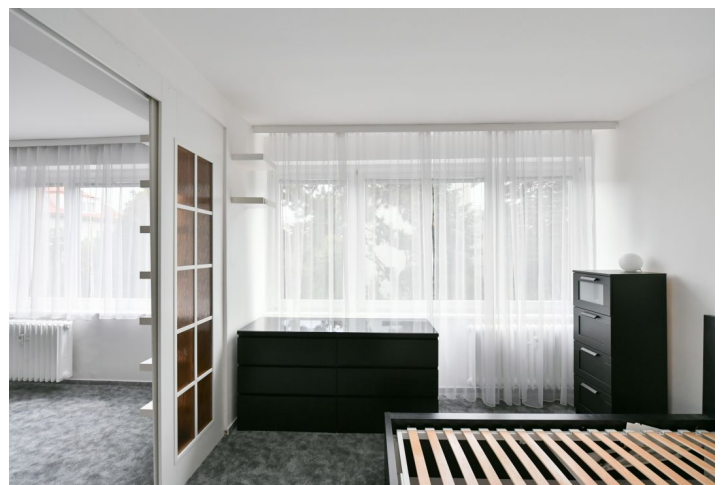
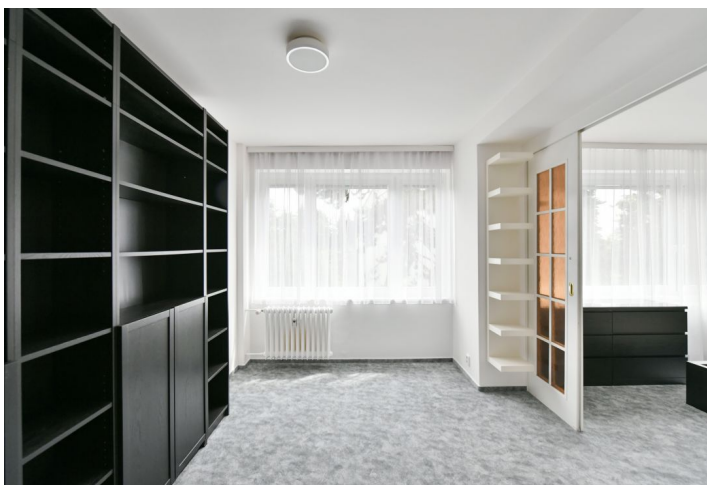


## Apartment Three-bedroom (4+kk)

Rented

87 m<sup>2</sup>, Prague 6, Břevnov, Rozýnova



## Apartment Three-bedroom (4+kk)

Rented

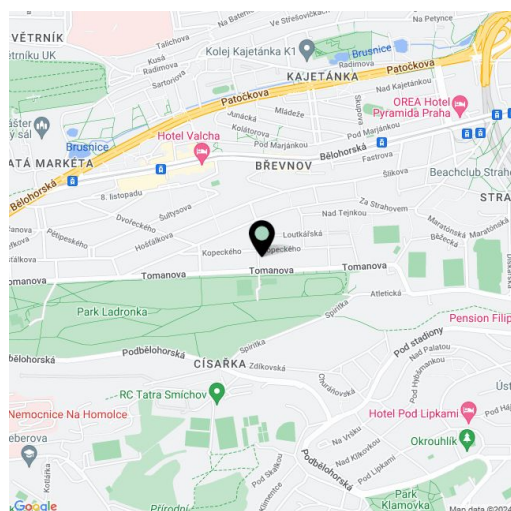
87 m<sup>2</sup>, Prague 6, Břevnov, Rozýnova

Total area	93 m <sup>2</sup>
Floor area*	87 m <sup>2</sup>
Loggia	6 m <sup>2</sup>
Parking	-
Cellar	Yes
Service price	Monthly deposit for services, water, and heating: CZK 5,000. Electricity and gas are billed separately.
PENB	G
Reference number	105460
Available from	Immediately

This furnished apartment with an enclosed balcony, on the 1st floor of a brick apartment building with a shared garden, and no elevator. Set on a quiet street in a residential neighborhood in Prague 6, in the immediate vicinity of popular Ladronka Park, near the Strahov Stadium and the Prague Castle. An area with quick connections to the city center, conveniently located for the airport and international schools in Prague 5 and 6. There is a bus stop just 20 m from the building, and nearby are children's playgrounds, tennis courts, and an outdoor basketball court.

The interior features a living room with a fully fitted open plan kitchen and access to the **enclosed balcony**, two bedrooms, a walk-through study/bedroom, a bathroom including a bathtub and a toilet, a separate guest toilet, and an entrance hall with built-in wardrobes.

**Hardwood parquet floor**, laminate floor, tiles, new carpets in the bedrooms, interior blinds, awning, central heating, washing machine, dishwasher, microwave oven, **cellar**, shared drying room in the building.



\* Area of the unit according to the Civil Code. The area consists of the sum total area of the entire unit bounded by perimeter walls.