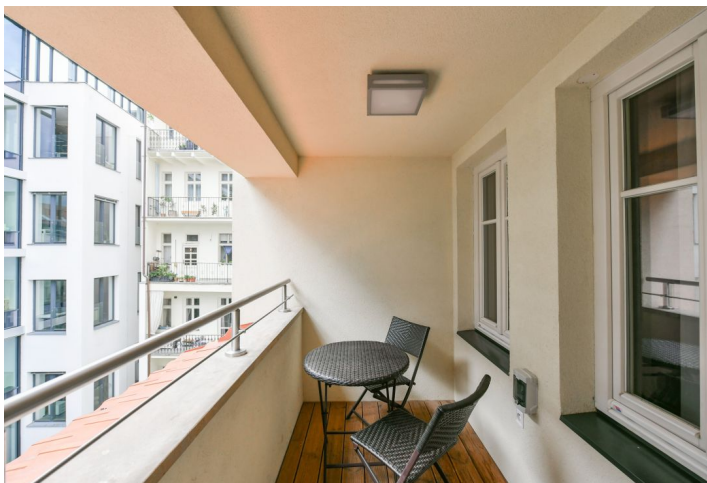
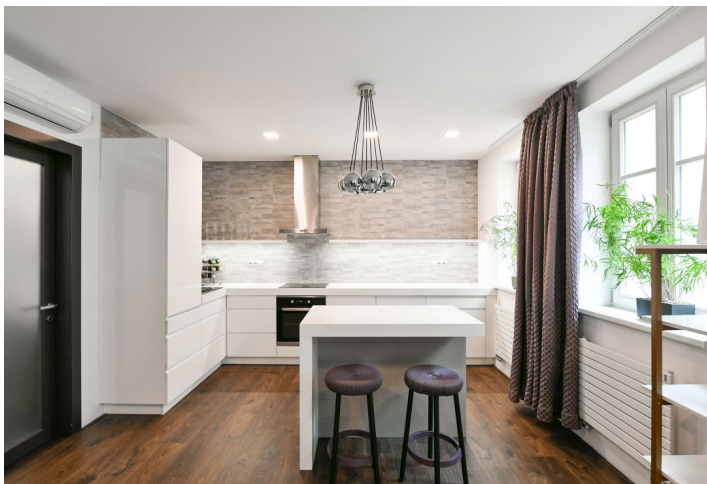


## Apartment One-bedroom (2+kk)

Rented

61 m<sup>2</sup>, Prague 1, Nové Město, Jungmannova



## Apartment One-bedroom (2+kk)

Rented

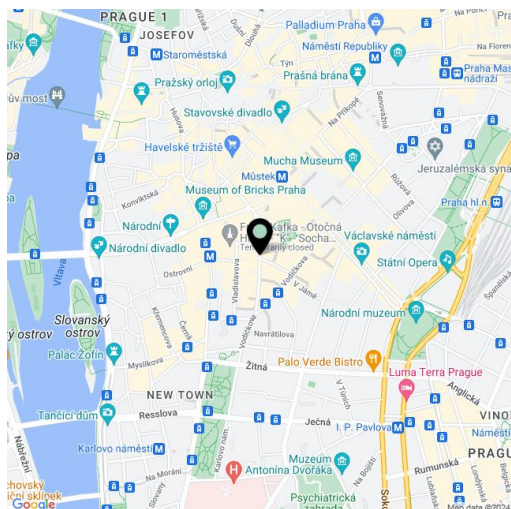
61 m<sup>2</sup>, Prague 1, Nové Město, Jungmannova

Total area	66 m <sup>2</sup>
Floor area*	61 m <sup>2</sup>
Loggia	5 m <sup>2</sup>
Parking	-
Cellar	-
Service price	Monthly deposit for services, water, and heating: CZK 5,000. Electricity is billed separately.
PENB	Not required
Reference number	105138
Available from	Immediately

Benefiting from a prime central location, this quiet furnished air-conditioned apartment with an enclosed balcony is situated on the 5th floor of a well-maintained historic building with an elevator. Located in the financial and commercial center of Prague, moments from the Quadrio shopping mall, with excellent access by public transport. The Národní třída metro station (line B) and tram line hub, as well as the Můstek metro station (lines A, B) are just a few steps away, and a wide range of amenities and services is available in the immediate vicinity.

The apartment includes an entrance hall with stairs leading down to the interior consisting of a living room with a fully fitted open plan kitchen and an **enclosed balcony**, a bedroom with a small storage room, and a bathroom (walk-in shower, toilet). The windows of the apartment are facing the courtyard.

**Air-conditioning**, vinyl floors, tiles, central heating, washing machine, dishwasher, induction stove top.



\* Size of the unit according to the Housing Act.

The area consists of the sum total of the internal area of every room.