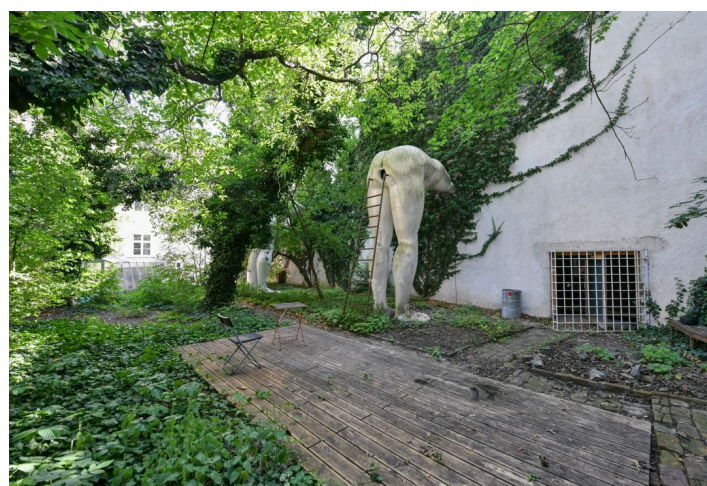
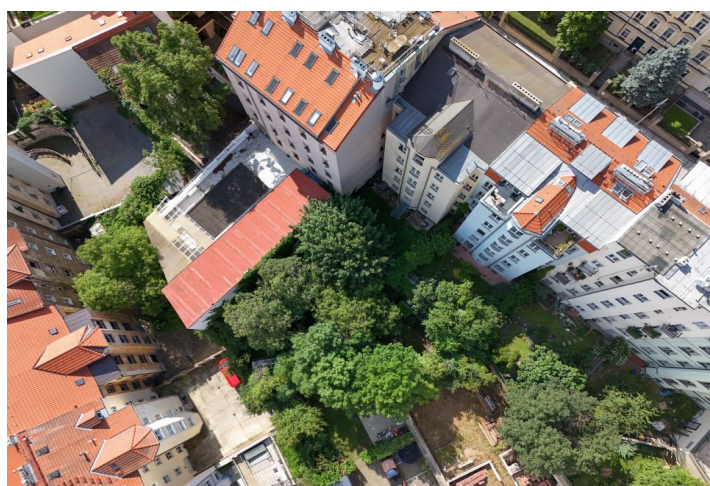


Retail space

Ask for price

678 m², Prague 5, Smíchov, Holečkova

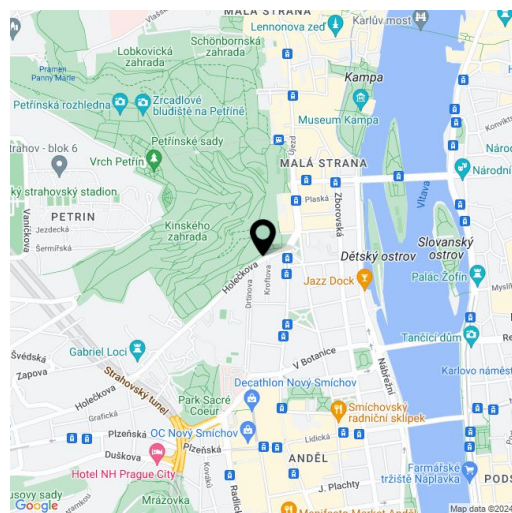


Retail space

Ask for price

678 m², Prague 5, Smíchov, Holečkova

Total area	678 m ²
Parking	-
PENB	G
Reference number	105060



This atypical, originally industrial building with a usable area of almost 700 m², used for 20 years as a renowned gallery, is located in the wider center of the city, in Prague 5 – Smíchov, just a few minutes' walk from the Nový Smíchov shopping center. After modification, the space will be suitable, for example, as a prestigious company headquarters, a showroom, or residential housing.

Key investment criteria

- floor area of the building: 678 m²
- outdoor spaces: 137 m²
- possibility of parking 2-3 cars
- potential possibility of buying the garden (405 m²) adjacent to the property
- exceptional gallery spaces
- not under monument protection
- absolutely variable use
- excellent location
- sale of the property (asset deal)

Property description

- house from the beginning of the 20th century
- last reconstruction in 2003
- basement: 207.83 m²
- ground floor: 357.25 m²
- 1st floor: 113.27 m²
- ceiling height 2.5 to 4 m
- gallery spaces, offices, service and storage spaces
- subject of the sale is a building in an inner courtyard with an entrance through an apartment building (easement for walking and driving obtained)

Location

- excellently accessible by car, public transport, and on foot
- public transport stop nearby (tram, bus, metro station within walking distance)
- within reach of the Smíchov Anděl pedestrian zone and the brand new Smíchov City district
-

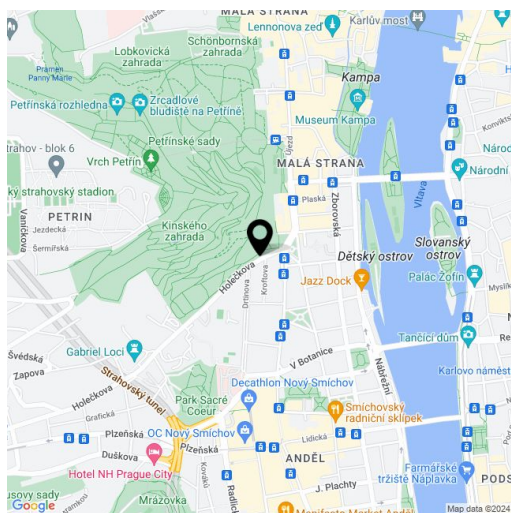
Retail space

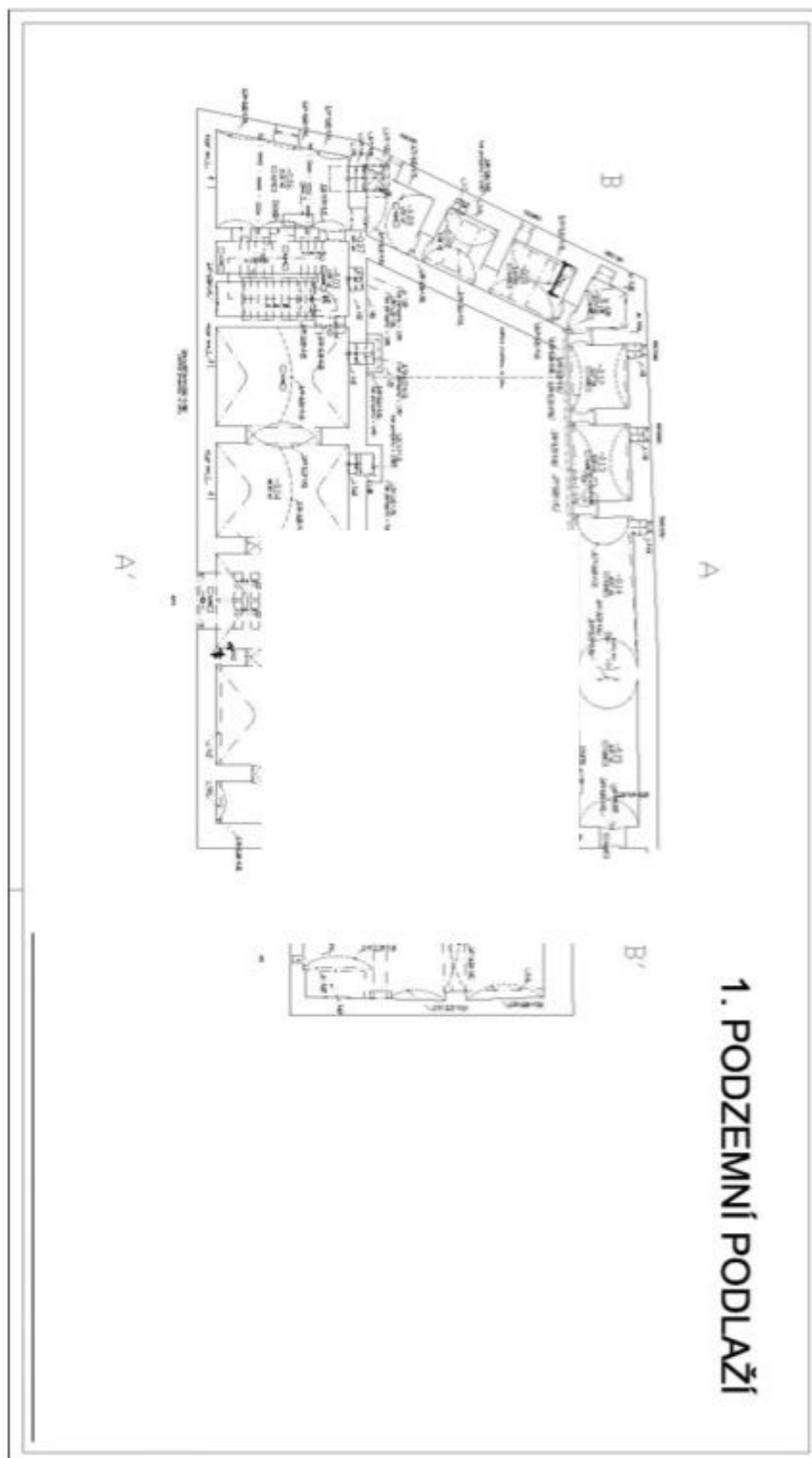
Ask for price

678 m², Prague 5, Smíchov, Holečkova

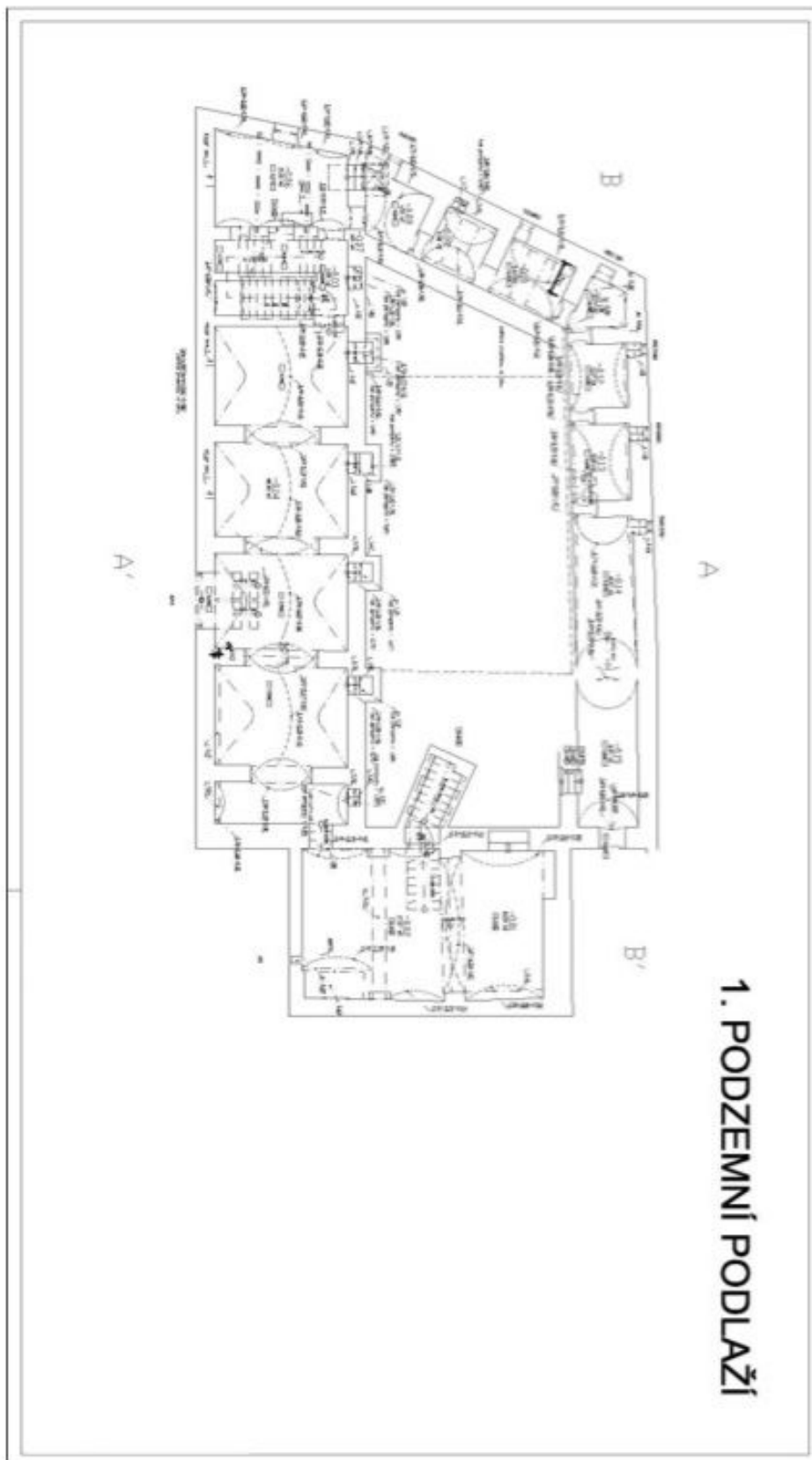
Total area	678 m ²
Parking	-
PENB	G
Reference number	105060

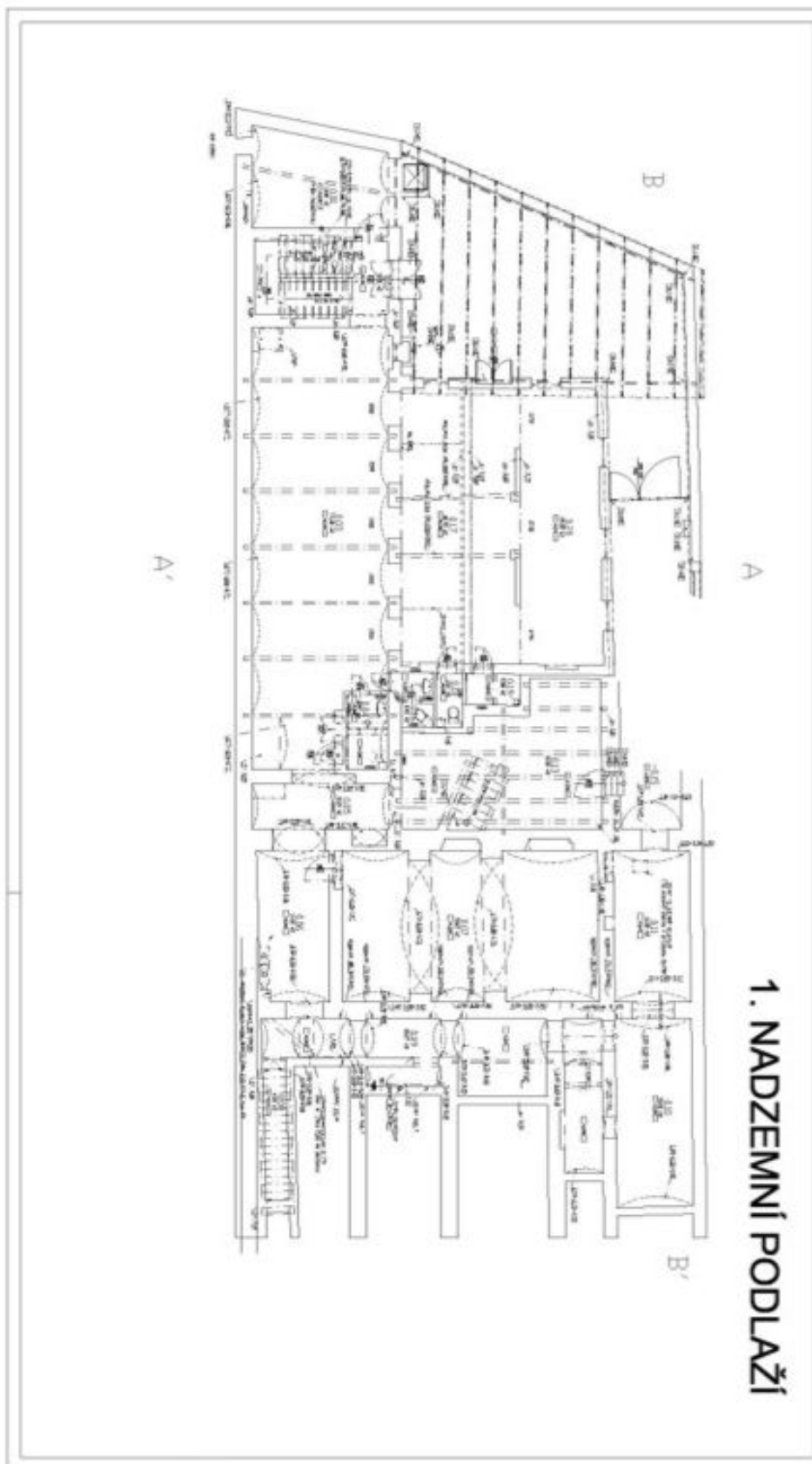
there are several parks in the vicinity: Kinských Garden, Sacré Coeur, Bertramka

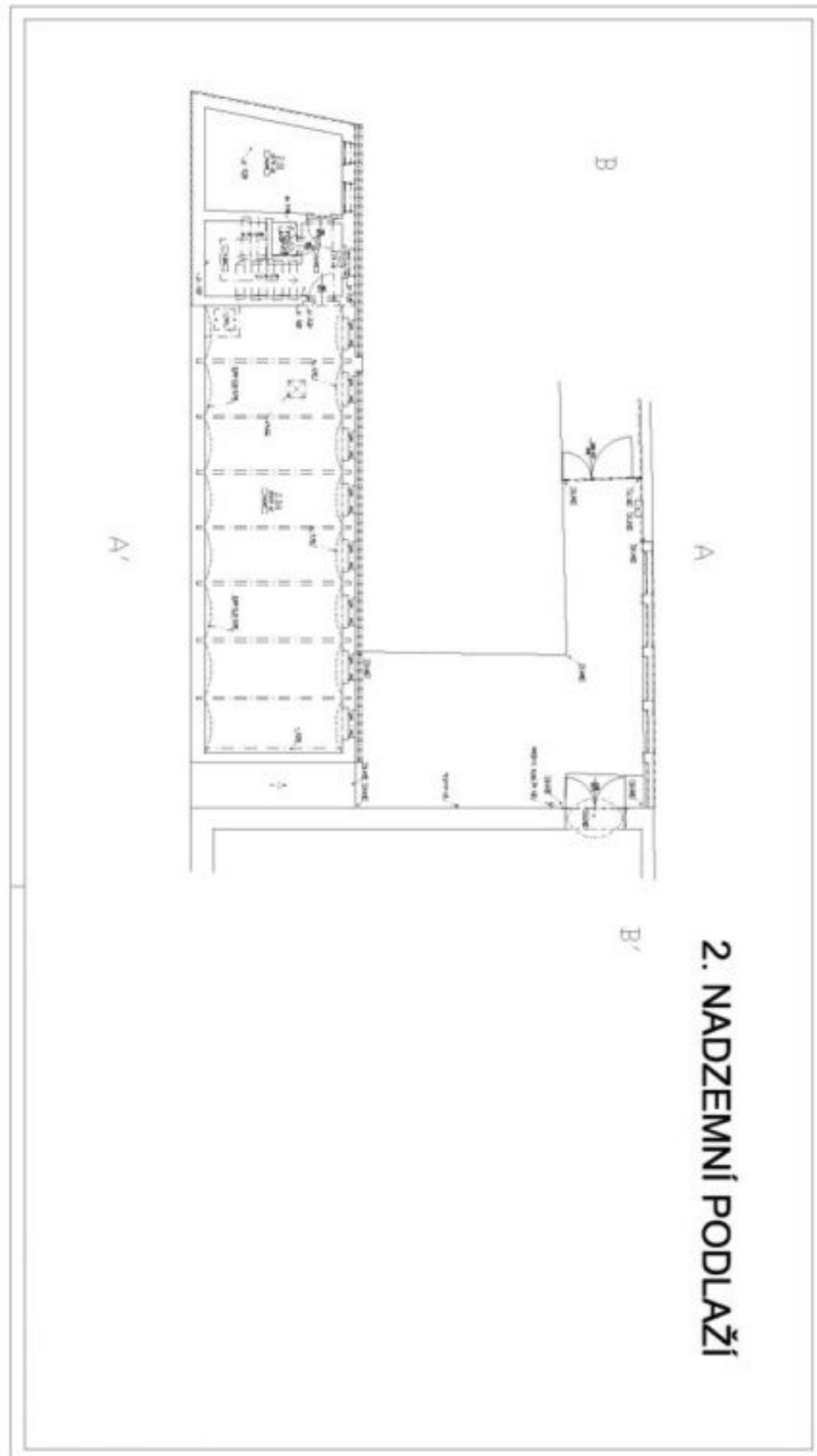




678 m², Prague 5, Smíchov, Holečkova







Retail space

Ask for price

678 m², Prague 5, Smíchov, Holečkova

