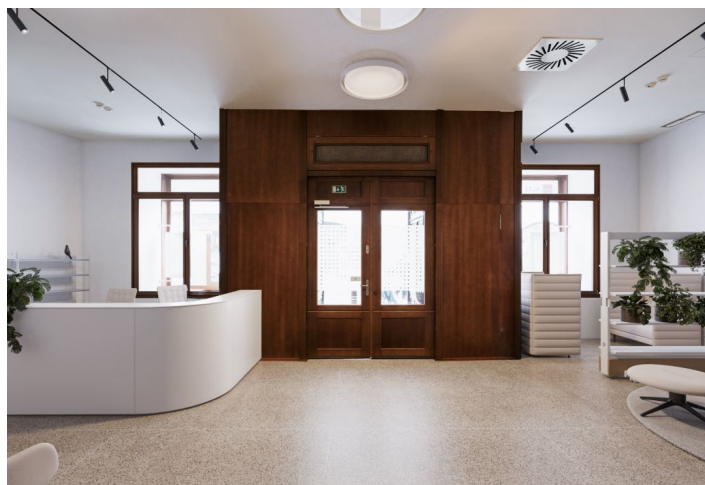
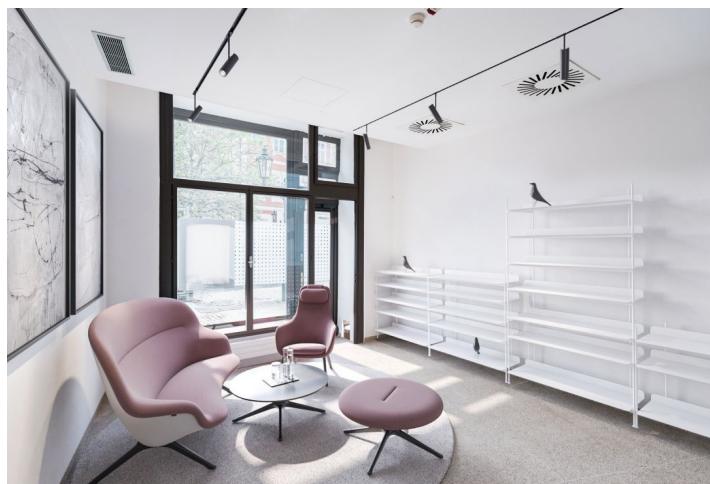
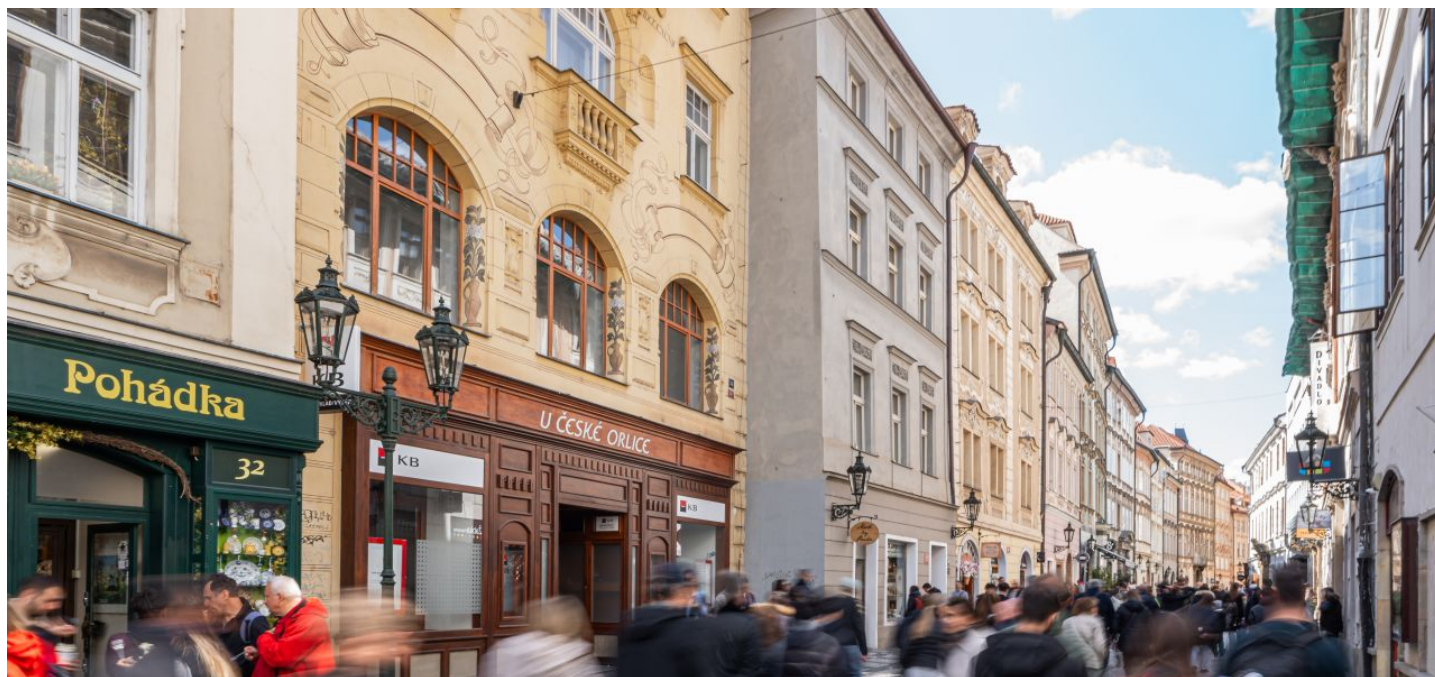


Office building

Ask for price

Prague 1, Staré Město, Celetná



Office building

Ask for price

Prague 1, Staré Město, Celetná

Tenant consumption	—
Parking	-
Parking service charges	—
Parking ratio	—
Certification	—
PENB	G
Reference number	104676

Dům U České orlice is a townhouse built in a Neo-Gothic style with the main facade facing Ovocný trh 15, and a courtyard wing facing Celetná 30 in Old Town. Since 1958 it has been protected as a cultural monument.

The property offers non-residential space for lease on six floors: **290 m² of commercial space with exclusive parameters** on one of Prague's "high-streets" and 33 m² of commercial space with views of Ovocný Trh Square. Tenants also have access to a roof terrace with attractive views.

Location:

Celetná Street is located in the historical center of Prague and it's also the first part of the Royal Route leading to Prague Castle. In the immediate vicinity there are many cultural monuments, major buildings, restaurants, cafes, and shops. The Staroměstská (line A), Můstek (line A, B) and Náměstí Republiky (line B) metro stations are within walking distance.

Building:

The façade of the building is dominated by a two-story bay window with a decorative roof, a Neo-Gothic gable and sgraffito ornaments (Czech eagle, Czech lion, and Moravian eagle) by the painter Mikoláš Alš. The name of the listed house is partly derived from these ornaments.

History:

The house was built in 1897 according to the designs of Austrian architect Friedrich Ohmann. The six-story building in an eclectic style combines elements of Neo-Gothic and Neo-Renaissance.

Dům U České orlice is situated on the site of an original medieval building, whose history dates back to 1357. From the 16th century it was associated with the noble family from Bubna and Litic, who had it rebuilt in a Baroque style. The original house was demolished as part of the redevelopment of Old Town, which gave rise to a family apartment house with a medical practice, whose investor was the Prague physician Čeněk Klika.

Features and Services:

Storage space in 1PP (102,77 sq. m) and 2PP (47,77 sq. m)
 Shop windows, large windows, high ceilings
 Elevator in the office and residential part of the building
 Private elevator and staircase in the commercial unit
 Possibility to build a garden in the courtyard
 Balcony towards the courtyard in the office part
 Toilets and kitchenette on each floor
 Shower and closet on the first underground floor

Office building

Ask for price

Prague 1, Staré Město, Celetná

Tenant consumption	—
Parking	-
Parking service charges	—
Parking ratio	—
Certification	—
PENB	G
Reference number	104676

Fiber-optic cable

Terrace

Photos of the non-residential premises used in this presentation have been edited post-production to give a more accurate view of the potential use of the premises.

Rental and service charges listed without VAT.

Office building

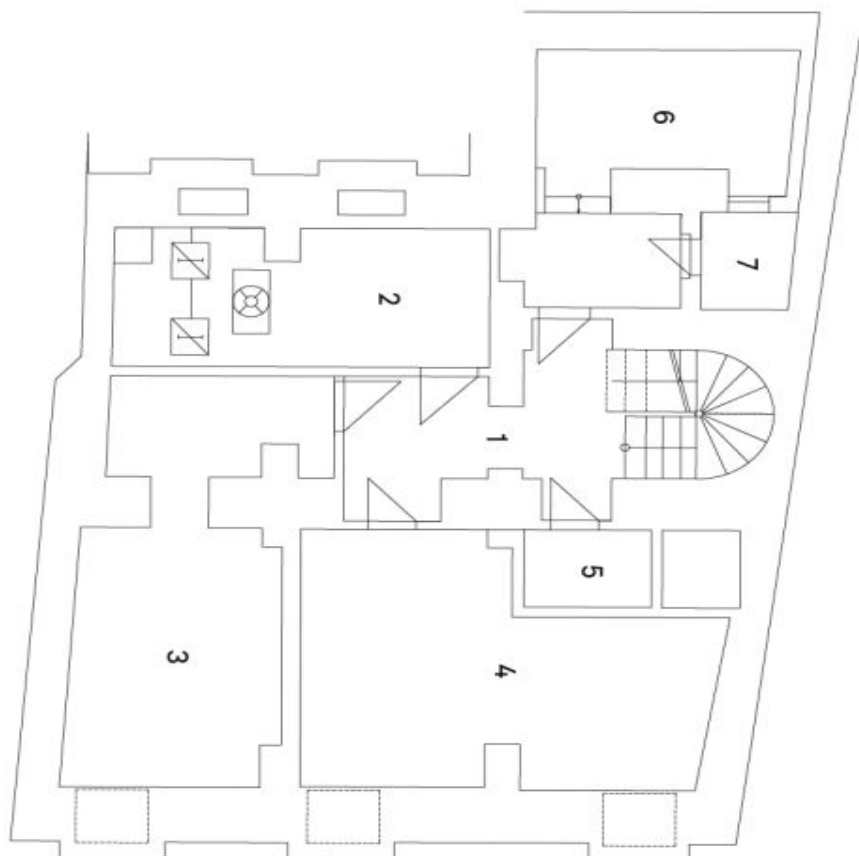
Prague 1, Staré Město, Celetná

Ask for price

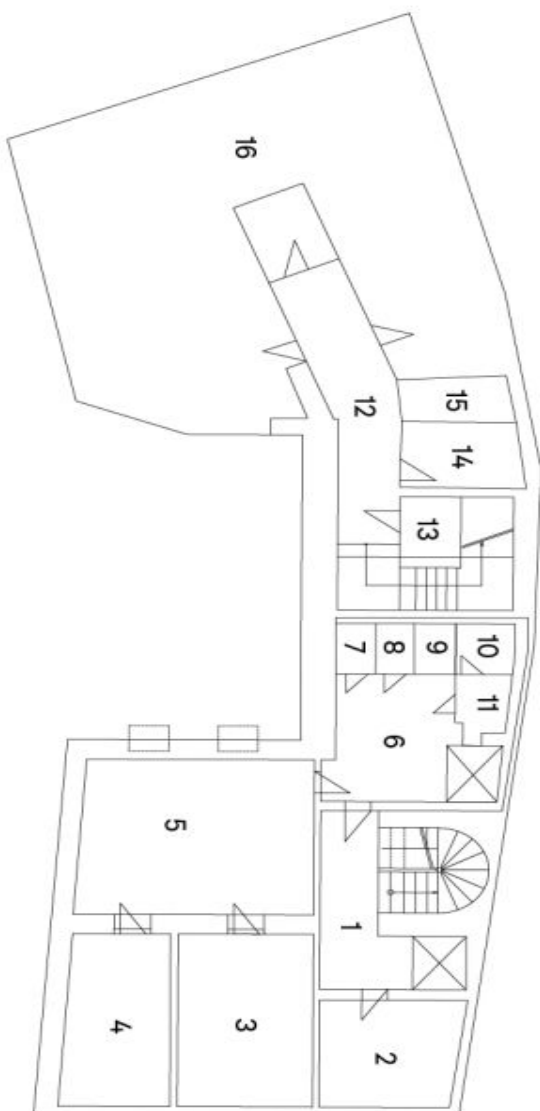
Ovocný trh 15 | Celetná 30

2.PP | 2. suterén

- 1 Chodba
- 2 VZT
- 3 Archiv
- 4 Archiv
- 5 Stojovna výtahu
- 6 Kotelna
- 7 Světlik



- 1 Schodiště
- 2 Šatna
- 3 Sklad
- 4 Sklad
- 5 Sklad
- 6 Chodba
- 7 Sprcha
- 8 Předsíň
- 9 WC
- 10 Úklid
- 11 Předsíň
- 12 Chodba
- 13 Sklep
- 14 Sklad
- 15 Sklep
- 16 Sklep byty



Office building

Prague 1, Staré Město, Celetná

Ask for price



Obchodní prostor (Ovocný trh)
Obchodní prostor (Celetná)

Ovocný trh 15 | Celetná 30

1.NP | Přízemí