

House Five-bedroom (6+kk)

Sold

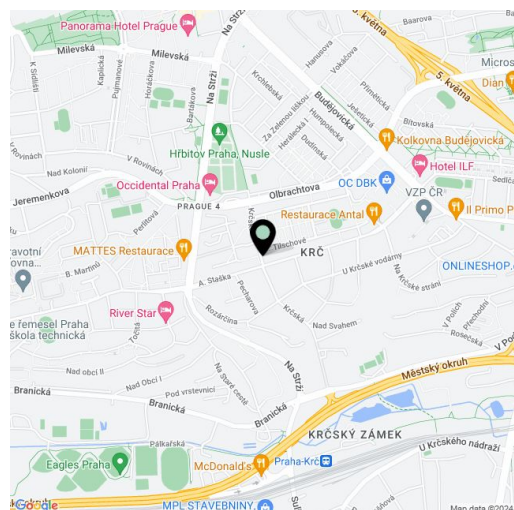
357 m², Prague 4, Krč, Krčská



House Five-bedroom (6+kk)

Sold357 m², Prague 4, Krč, Krčská

Plot	594 m ²
Foot print	154 m ²
Garden	440 m ²
Parking	Double garage
Garage	Yes
Cellar	-
PENB	D
Reference number	104673



This spacious family house (separate half of a semi-detached house) with a bright interior and breathtaking views is located on a southern slope on a quiet side street in Prague 4 Krč, right next to the Habrovka forest park near a metro station. The variable and generously designed layout showcases the seamless combination of residential and business purposes.

In the basement, there are 2 separate rooms (offices) with windows towards the **garden**, 2 workshops, a toilet, a shower bathroom, large and small storage spaces, a corridor, and a staircase hall. On the 1st floor is a generously sized living room with a preparation for a kitchen, a hall, a toilet, a storage room, and a utility room. The 2nd floor consists of a master bedroom with an en-suite bathroom and a **balcony**, another 2 bedrooms with access to a **sunny terrace**, a central bathroom, a stairwell, and a winter garden. The south-facing terrace offers nice views of the surrounding area, and the balcony is west-facing towards the garden lined with mature greenery.

The house is almost completely renovated; windows are plastic with interior blinds. Gas heating. Parking in a **double garage**.

The surrounding rich greenery of the **Habrovka forest park** provides a pleasant seclusion from the hustle and bustle of the city, but at the same time the place is very accessible and everything you need is within walking distance. A kindergarten and elementary school, a **high school**, a health clinic, a shopping center, and several restaurants are about a 10-minute walk away, and there is a sports field with **tennis courts** nearby. The **Budějovická** metro station (line C) can be reached on foot or within 5 minutes by bus, and the Olbrachtova or Nádraží Krč **future station of the line D metro** will be even closer.

Usable area 357 m², built-up area 154 m², garden 440 m², plot 594 m².

House Five-bedroom (6+kk)

Sold

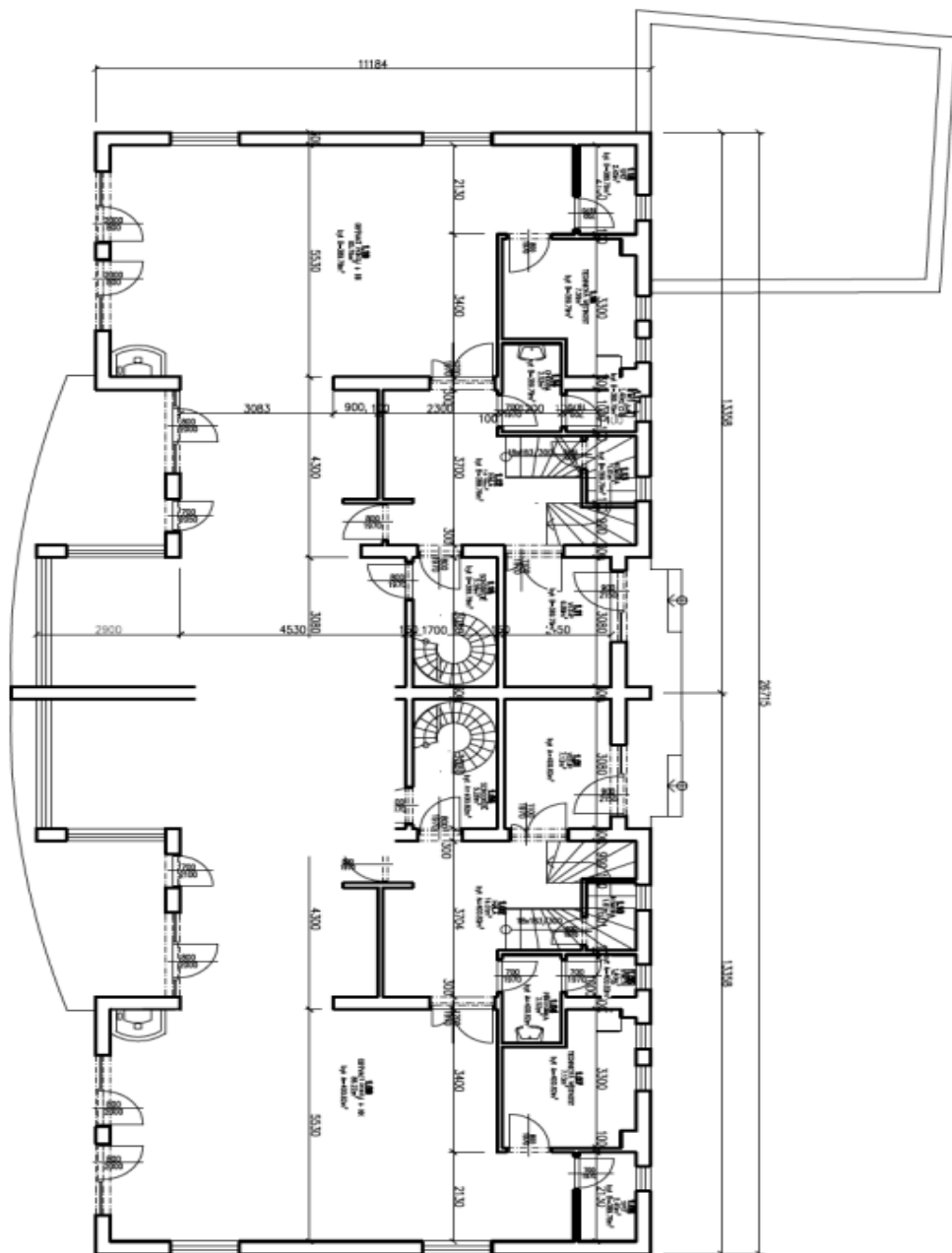
357 m², Prague 4, Krč, Krčská

Tabulka místností - 1 NP

Číslo	Název	Plocha [m ²]
1.11	VESTIB	6,89
1.12	HALA	14,29
1.13	KUCHYŇA	1,61
1.14	CHODBA	2,52
1.15	SPALOVNĚ	5,28
1.16	TECHNICKÁ MÍSTNOST	7,58
1.17	WC	1,4
1.18	SPRŤ	2,45
1.19	SEPVACÍ PRŮVAZ + KK	65,18

Tabulka místností - 1 NP - BYT A

Číslo	Název	Plocha [m ²]
1.01	VESTIB	7,12
1.02	HALA	14,01
1.04	PRŮJÍZDNKA	2,52
1.05	WC	1,4
1.06	SPALOVNĚ	5,38
1.07	TECHNICKÁ MÍSTNOST	7,13
1.09	SEPVACÍ PRŮVAZ + KK	66,22
1.10	KUCHYŇA	1,61



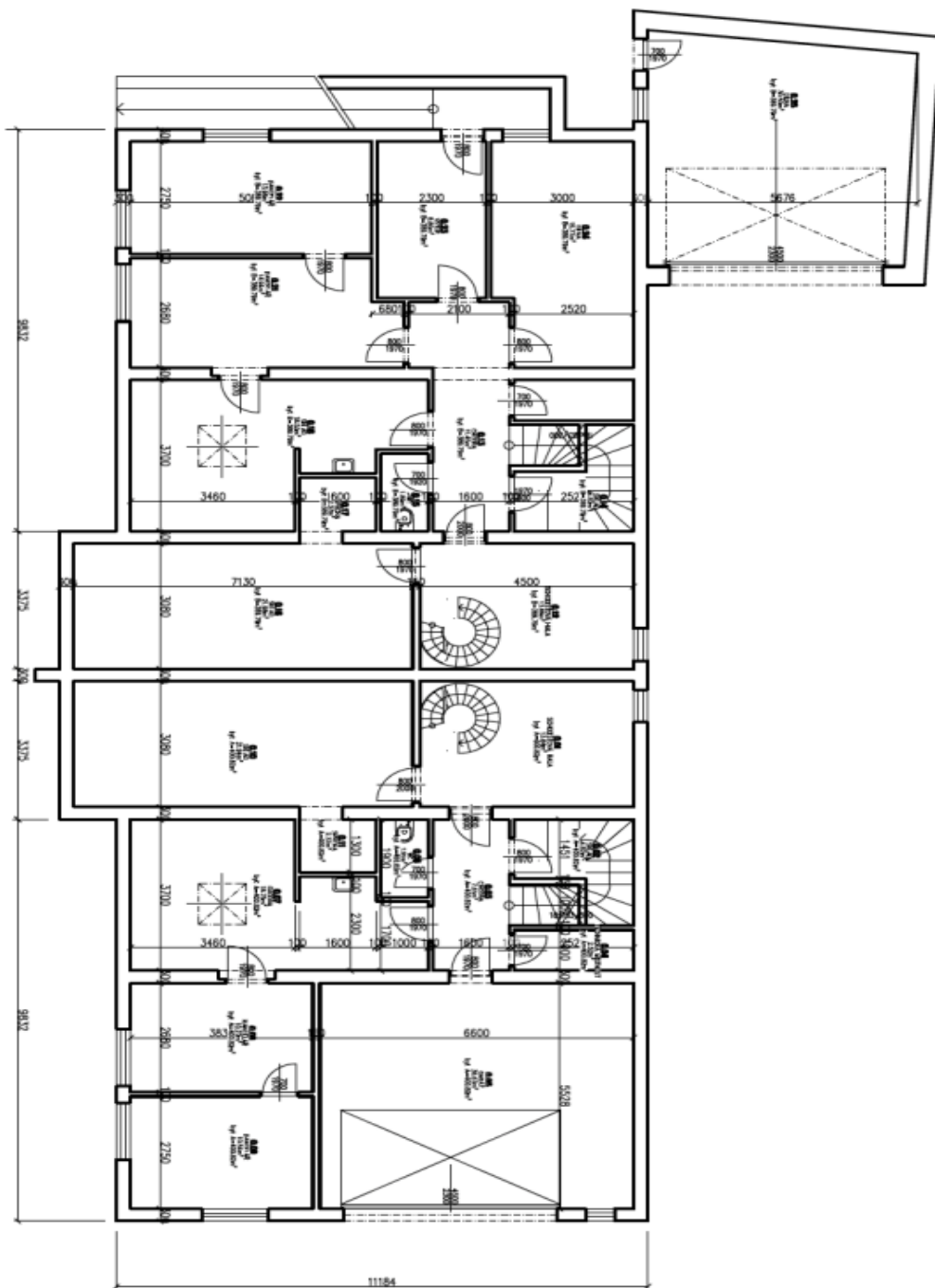
House Five-bedroom (6+kk)

Sold

357 m², Prague 4, Krč, Krčská

Objekt	Název	Podlahová plocha [m²]
012	SOCHOVSKÁ PÁVA	13,89
013	CHOUBA	11,45
014	SKALD	4,82
015	MC	1,85
016	SKALD	21,98
017	SPRCHA	2,37
018	SKALD	18,43
019	KANALIZACE	14,84
020	KANALIZACE	13,88
021	OSTROV	8,09
022	OSTROV	25,77
023	OSTROV	9,73

Objekt	Název	Podlahová plocha [m²]
024	SOCHOVSKÁ PÁVA	13,84
025	SKALD	4,82
026	CHOUBA	7,81
027	TEPLOTNÁ VÝMĚNÍK	7,28
028	OSTROV	8,67
029	MC	1,91
030	CHOUBA	18,75
031	KANALIZACE	10,27
032	KANALIZACE	10,54
033	SKALD	27,94
034	SPRCHA	9,37



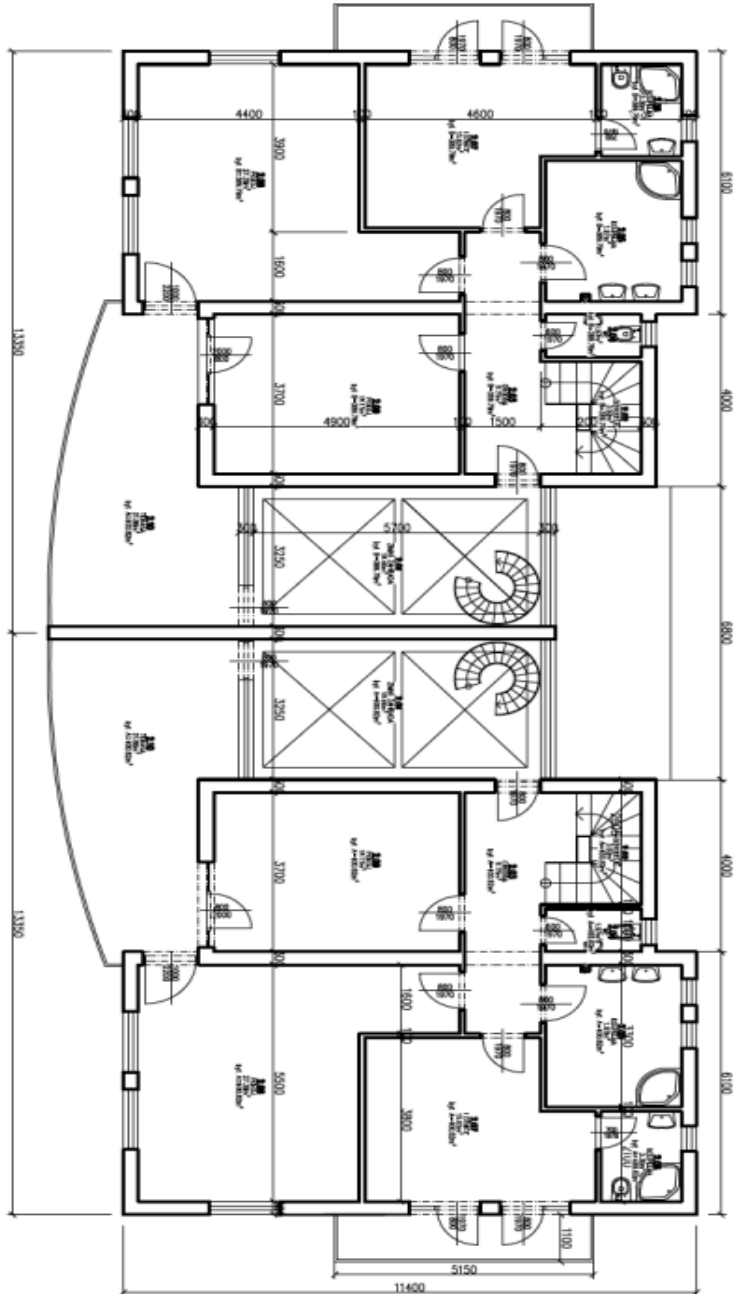
House Five-bedroom (6+kk)

Sold

357 m², Prague 4, Krč, Krčská

Objekt	Název	Podlahová plocha (m²)
7101	MANU ZAJAZDA	18,46
7102	SPROŠTĚ	1,97
7103	PŘEDSA	9,75
7104	KČ	1,97
7105	KOUPALNA	1,97
7106	KOUPALNA	3,36
7107	LŮŽNICE	15,62
7108	POKOJ	27,29
7109	POKOJ	18,13
Celková plocha (m²) 100,56		

Objekt	Název	Podlahová plocha (m²)
7101	MANU ZAJAZDA	18,46
7102	SPROŠTĚ	3,82
7103	CHODBA	8,75
7104	KČ	1,97
7105	KOUPALNA	1,97
7106	KOUPALNA	3,36
7107	LŮŽNICE	15,62
7108	POKOJ	27,29
7109	POKOJ	18,13
Celková plocha (m²) 100,56		



House Five-bedroom (6+kk)

Sold

357 m², Prague 4, Krč, Krčská

